

Water-Data Report 2013

**06336000 LITTLE MISSOURI RIVER AT MEDORA, ND**

Little Missouri Basin  
Middle Little Missouri Subbasin

LOCATION.--Lat 46°55'10", long 103°31'40" referenced to North American Datum of 1927, in NE ¼ sec.27, T.140 N., R.102 W., Billings County, ND, Hydrologic Unit 10110203, on left bank 50 ft above bridge on U.S. Highway 10, one quarter of a mi west of Medora, and 1 ¼ mi upstream from Andrews Creek.

DRAINAGE AREA.--6,190 mi<sup>2</sup>, approximately.

**SURFACE-WATER RECORDS**

PERIOD OF RECORD.--DAILY DISCHARGE--May 1903 to October 1908, October to November 1921, April, May, and December 1922, May 1923 to September 1924, October 1928 to September 1934, October 1945 to September 1975, March 2001 to current year. Monthly discharge only for some periods, published in WSP 1309.

PERIOD OF RECORD.--DAILY GAGE HEIGHT--August 2001 to current year.

REVISED RECORDS.--WSP 546: Drainage area. WSP 1279: 1903-7, 1923-24, 1930-31, 1934(M). When the gage was re-established in March 2001, the base gage was incorrectly set 0.84 ft too low. All gage heights since October 1, 2002, and the 2001 peak stage have been corrected. Unit values and daily values data for water years 2001-02 have not been adjusted. Discharge data for those years are unaffected by this correction.

GAGE.--Water-stage recorder on upstream side of highway bridge. Datum of gage is 2,246.75 ft above National Geodetic Vertical Datum of 1929. Prior to October 9, 1945, nonrecording gages at several sites within 0.2 mi upstream from present site at various datums. October 9, 1945, to August 22, 1951, nonrecording gage at current location at current datum. September 1951 to September 1975, recording gage 600 ft downstream at current datum.

REMARKS.--Records fair except for estimated daily discharges, which are poor.

## 06336000 LITTLE MISSOURI RIVER AT MEDORA, ND—Continued

**DISCHARGE, CUBIC FEET PER SECOND**  
**WATER YEAR OCTOBER 2012 TO SEPTEMBER 2013**  
**DAILY MEAN VALUES**

[e, estimated]

Day	Oct	Nov	Dec	Jan	Feb	Mar	Apr	May	Jun	Jul	Aug	Sep
1	10	52	e41	e20	e19	e55	350	76	7,150	237	38	47
2	11	44	e42	e20	e19	e57	298	72	6,940	219	40	48
3	20	42	e42	e20	e19	e59	229	65	3,960	190	110	45
4	22	40	e43	e20	e19	e60	179	60	3,370	195	244	43
5	31	35	e45	e20	e20	e61	153	56	3,750	172	220	41
6	24	32	e45	e20	e20	e62	134	55	3,550	170	371	39
7	18	29	e43	e20	e20	e63	123	51	3,240	174	835	33
8	25	29	e40	e20	e20	e64	124	52	3,010	193	478	42
9	37	e26	e37	e19	e20	e66	123	48	2,500	278	359	639
10	32	e23	e34	e19	e20	e67	121	47	1,970	465	330	6,920
11	25	e20	e32	e19	e20	e71	110	45	1,350	429	293	4,800
12	21	e18	e30	e19	e20	e75	130	43	982	220	227	1,730
13	20	e18	e29	e19	e20	e80	135	42	872	157	250	859
14	19	e19	e29	e20	e20	e84	155	42	853	153	319	541
15	19	e20	e29	e20	e21	e88	145	38	625	244	231	e415
16	21	e22	e28	e20	e21	e90	155	44	484	160	164	e335
17	31	e24	e28	e20	e22	e91	141	45	411	115	159	307
18	24	e26	e28	e19	e22	e92	137	43	335	100	122	252
19	28	e29	e27	e18	e23	e90	146	118	287	85	257	219
20	32	e31	e27	e18	e25	e87	155	1,520	247	78	309	178
21	26	e33	e26	e18	e27	e84	177	2,080	218	72	219	155
22	36	e36	e25	e18	e30	e82	201	1,650	207	64	168	137
23	48	e38	e24	e18	e34	e80	171	1,060	273	59	137	125
24	51	e40	e23	e18	e40	e79	168	736	781	55	120	111
25	41	e41	e22	e19	e45	e80	150	501	632	50	108	95
26	33	e42	e22	e19	e49	e84	132	367	560	45	96	94
27	30	e43	e21	e20	e51	e91	116	363	371	41	88	87
28	40	e43	e20	e20	e52	e120	100	2,370	267	39	81	81
29	41	e43	e20	e20	---	e160	90	2,680	346	41	72	73
30	53	e42	e20	e20	---	e220	82	1,660	269	42	68	70
31	52	---	e20	e19	---	e400	---	3,490	---	41	55	---
<b>Total</b>	921	980	942	599	738	2,942	4,630	19,519	49,810	4,583	6,568	18,561
<b>Mean</b>	29.7	32.7	30.4	19.3	26.4	94.9	154	630	1,660	148	212	619
<b>Max</b>	53	52	45	20	52	400	350	3,490	7,150	465	835	6,920
<b>Min</b>	10	18	20	18	19	55	82	38	207	39	38	33
<b>Ac-ft</b>	1,830	1,940	1,870	1,190	1,460	5,840	9,180	38,720	98,800	9,090	13,030	36,820

**STATISTICS OF MONTHLY MEAN DATA FOR WATER YEARS 1903 - 2013, BY WATER YEAR (WY)**

	Oct	Nov	Dec	Jan	Feb	Mar	Apr	May	Jun	Jul	Aug	Sep
<b>Mean</b>	143	52.8	22.5	17.8	136	1,208	1,236	893	1,083	396	214	142
<b>Max</b>	2,226	369	127	213	1,075	6,831	9,847	8,579	4,692	3,541	2,521	1,314
<b>(WY)</b>	(1924)	(1947)	(1947)	(1974)	(1947)	(1972)	(1952)	(2011)	(1929)	(1905)	(1903)	(1903)
<b>Min</b>	1.67	1.97	0.02	0.00	0.00	32.8	8.12	3.94	41.7	11.4	0.75	0.29
<b>(WY)</b>	(1959)	(1956)	(1956)	(1950)	(1950)	(1964)	(1905)	(1931)	(2004)	(2002)	(1934)	(1934)

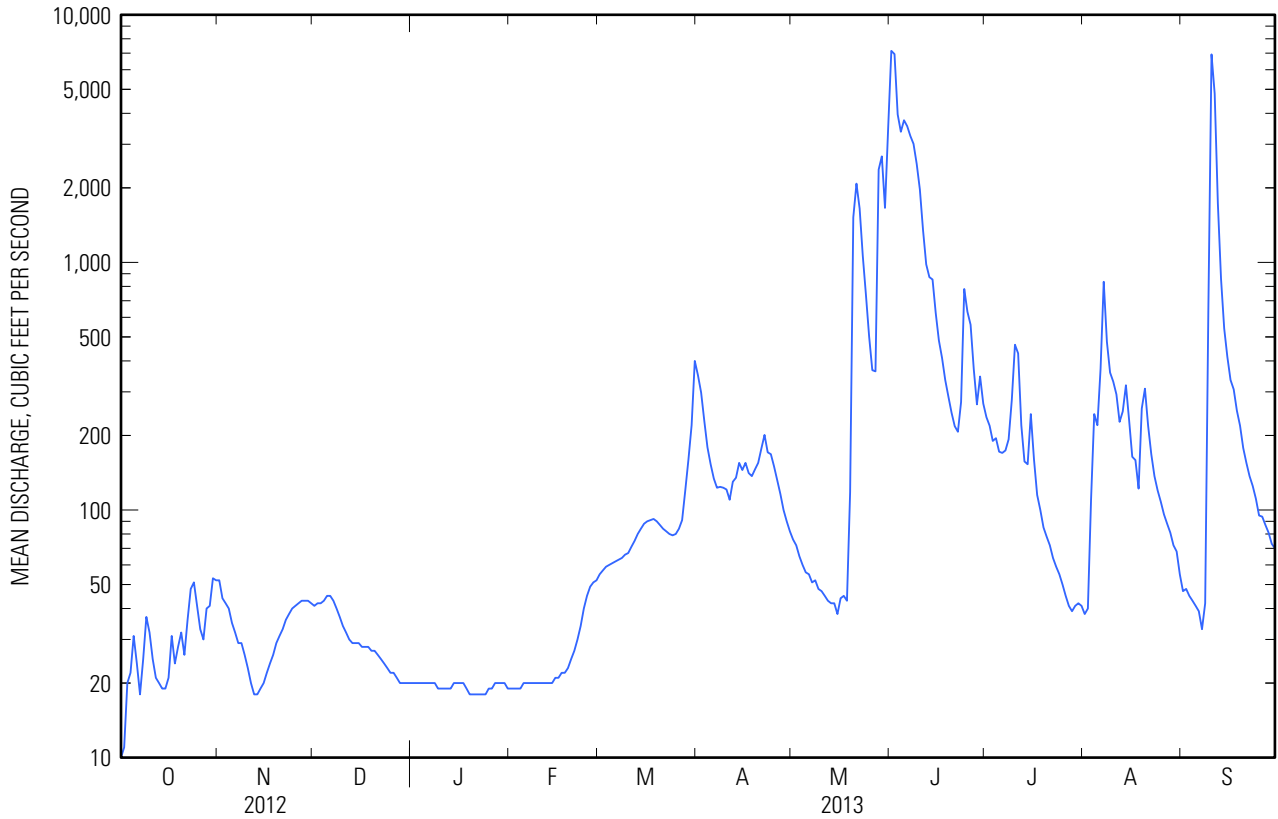
06336000 LITTLE MISSOURI RIVER AT MEDORA, ND—Continued

SUMMARY STATISTICS

	Calendar Year 2012		Water Year 2013		Water Years 1903 - 2013	
<b>Annual total</b>	25,891.5		110,793			
<b>Annual mean</b>	70.7		304		<sup>a</sup> 456	
<b>Highest annual mean</b>					<sup>a</sup> 1,580	2011
<b>Lowest annual mean</b>					<sup>a</sup> 52.7	2002
<b>Highest daily mean</b>	685	Mar 13	7,150	Jun 1	39,600	Apr 8, 1952
<b>Lowest daily mean</b>	5.6	Sep 13	10	Oct 1	0.00	Feb 1, 1932
<b>Annual seven-day minimum</b>	6.1	Sep 11	18	Jan 18	0.00	Jan 21, 1933
<b>Maximum peak flow</b>			<sup>b</sup> 8,400 Sep 10		65,000	Mar 23, 1947
<b>Maximum peak stage</b>			11.53	Jun 1	20.50	Mar 23, 1947
<b>Annual runoff (ac-ft)</b>	51,360		219,800		<sup>a</sup> 330,300	
<b>10 percent exceeds</b>	129		480		990	
<b>50 percent exceeds</b>	49		55		54	
<b>90 percent exceeds</b>	14		20		2.0	

<sup>a</sup> Based on complete water years only.

<sup>b</sup> Gage height, 11.31 ft.

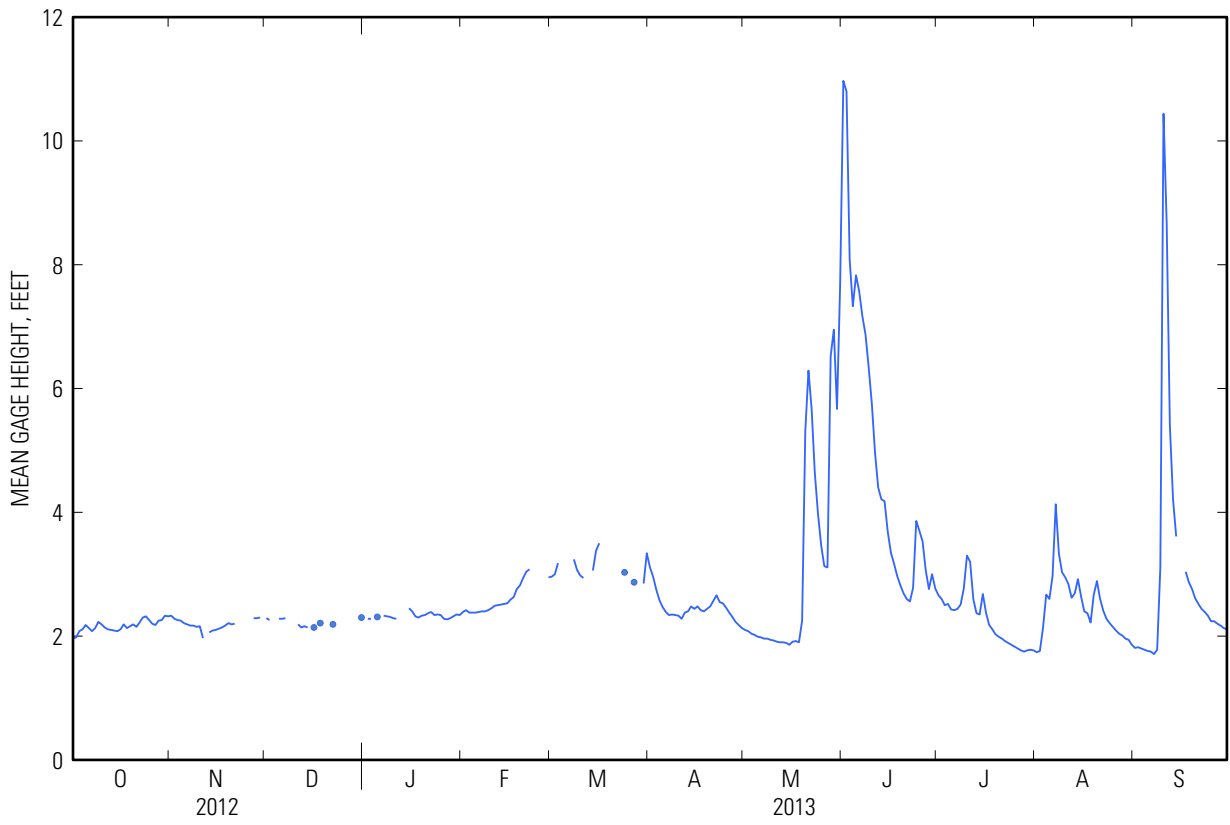


## 06336000 LITTLE MISSOURI RIVER AT MEDORA, ND—Continued

**GAGE HEIGHT, FEET**  
**WATER YEAR OCTOBER 2012 TO SEPTEMBER 2013**  
**DAILY MEAN VALUES**

Day	Oct	Nov	Dec	Jan	Feb	Mar	Apr	May	Jun	Jul	Aug	Sep
1	1.96	2.33	2.29	---	2.39	2.96	3.11	2.10	10.97	2.66	1.74	1.81
2	1.98	2.28	2.26	2.28	2.42	3.00	2.96	2.08	10.80	2.60	1.76	1.82
3	2.08	2.26	---	2.28	2.38	3.18	2.75	2.04	8.08	2.50	2.14	1.80
4	2.11	2.25	---	---	2.38	---	2.58	2.02	7.33	2.52	2.67	1.78
5	2.18	2.21	2.28	2.31	2.38	---	2.47	1.99	7.83	2.43	2.60	1.76
6	2.13	2.19	2.28	---	2.39	---	2.39	1.98	7.57	2.42	2.97	1.75
7	2.08	2.17	2.29	2.33	2.40	---	2.34	1.96	7.17	2.44	4.13	1.71
8	2.13	2.17	---	2.32	2.40	3.24	2.35	1.96	6.87	2.51	3.33	1.78
9	2.23	2.15	---	2.31	2.42	3.07	2.34	1.94	6.34	2.77	3.03	3.12
10	2.19	2.16	---	2.29	2.45	2.98	2.33	1.93	5.75	3.30	2.95	10.44
11	2.14	1.97	2.19	2.28	2.49	2.94	2.28	1.91	4.96	3.20	2.84	8.67
12	2.11	---	2.14	---	2.50	---	2.38	1.90	4.40	2.60	2.62	5.41
13	2.10	2.06	2.16	---	2.51	---	2.40	1.90	4.21	2.37	2.69	4.21
14	2.09	2.09	2.14	---	2.52	3.06	2.48	1.89	4.18	2.35	2.92	3.61
15	2.08	2.10	---	2.45	2.53	3.38	2.44	1.86	3.69	2.68	2.64	---
16	2.11	2.12	2.14	2.40	2.59	3.50	2.48	1.91	3.35	2.38	2.40	---
17	2.19	2.14	---	2.32	2.63	---	2.42	1.92	3.17	2.18	2.37	3.04
18	2.13	2.17	2.21	2.30	2.76	---	2.40	1.90	2.97	2.11	2.22	2.87
19	2.16	2.21	---	2.33	2.82	---	2.44	2.25	2.82	2.03	2.67	2.76
20	2.19	2.19	---	2.34	2.94	---	2.48	5.31	2.69	1.99	2.89	2.61
21	2.15	2.20	---	2.37	3.04	---	2.57	6.29	2.60	1.96	2.60	2.52
22	2.22	---	2.19	2.39	3.08	---	2.66	5.67	2.56	1.92	2.41	2.44
23	2.30	---	---	2.34	---	---	2.55	4.64	2.78	1.89	2.28	2.39
24	2.32	---	---	2.35	---	3.03	2.53	3.98	3.86	1.86	2.21	2.33
25	2.26	---	---	2.34	---	---	2.46	3.47	3.70	1.83	2.15	2.24
26	2.20	---	---	2.28	---	---	2.38	3.13	3.53	1.80	2.09	2.24
27	2.18	2.29	---	2.27	---	2.87	2.31	3.11	3.06	1.77	2.04	2.20
28	2.25	2.29	---	2.29	2.95	---	2.23	6.52	2.76	1.75	2.01	2.17
29	2.26	2.30	---	2.32	---	---	2.18	6.95	3.00	1.77	1.96	2.13
30	2.33	---	---	2.35	---	2.85	2.13	5.67	2.77	1.78	1.94	2.11
31	2.32	---	2.30	2.34	---	3.34	---	7.69	---	1.77	1.86	---
<b>Mean</b>	2.17	---	---	---	---	---	2.46	3.22	4.86	2.26	2.49	---
<b>Max</b>	2.33	---	---	---	---	---	3.11	7.69	10.97	3.30	4.13	---
<b>Min</b>	1.96	---	---	---	---	---	2.13	1.86	2.56	1.75	1.74	---

06336000 LITTLE MISSOURI RIVER AT MEDORA, ND—Continued



**06336000 LITTLE MISSOURI RIVER AT MEDORA, ND—Continued**

**WATER-QUALITY RECORDS**

PERIOD OF DAILY RECORD.--

WATER TEMPERATURE: March 1947 to September 1949, April to November 2013 (discontinued).

SPECIFIC CONDUCTANCE: April to November 2013 (discontinued).

PH: April to November 2013 (discontinued).

DISSOLVED OXYGEN: April to November 2013 (discontinued).

INSTRUMENTATION.--Multiparameter water-quality monitor.

REMARKS.--Records rated as follows:

WATER TEMPERATURE: Rated good: April 5-November 5.

SPECIFIC CONDUCTANCE: Rated good: May 14-August 12, September 17-November 5. Rated fair: April 5-May 13. Rated poor: August 13-September 16.

PH: Rated good: April 5-July 10, July 17-August 9, August 14-November 5. Rated fair: July 11-16, August 10-13.

DISSOLVED OXYGEN: Rated good: April 5-November 5.

EXTREMES FOR CURRENT YEAR.--

WATER TEMPERATURE: Maximum recorded, 30.4°C, September 6; minimum recorded, -0.1°C, April 9, 15.

SPECIFIC CONDUCTANCE: Maximum recorded, 2960 microsiemens, May 15; minimum recorded, 510 microsiemens, September 11.

PH: Maximum recorded, 8.8 units on many days in May, July, and August; minimum recorded, 7.8 units, September 2, 3.

DISSOLVED OXYGEN: Maximum recorded, 12.8 milligrams per liter, April 9, 15; minimum recorded, 3.0 milligrams per liter, September 10.

06336000 LITTLE MISSOURI RIVER AT MEDORA, ND—Continued

TEMPERATURE, WATER, DEGREES CELSIUS  
WATER YEAR OCTOBER 2012 TO SEPTEMBER 2013

Day	Max	Min	Mean	Max	Min	Mean	Max	Min	Mean	Max	Min	Mean
	October			November			December			January		
1	---	---	---	---	---	---	---	---	---	---	---	---
2	---	---	---	---	---	---	---	---	---	---	---	---
3	---	---	---	---	---	---	---	---	---	---	---	---
4	---	---	---	---	---	---	---	---	---	---	---	---
5	---	---	---	---	---	---	---	---	---	---	---	---
6	---	---	---	---	---	---	---	---	---	---	---	---
7	---	---	---	---	---	---	---	---	---	---	---	---
8	---	---	---	---	---	---	---	---	---	---	---	---
9	---	---	---	---	---	---	---	---	---	---	---	---
10	---	---	---	---	---	---	---	---	---	---	---	---
11	---	---	---	---	---	---	---	---	---	---	---	---
12	---	---	---	---	---	---	---	---	---	---	---	---
13	---	---	---	---	---	---	---	---	---	---	---	---
14	---	---	---	---	---	---	---	---	---	---	---	---
15	---	---	---	---	---	---	---	---	---	---	---	---
16	---	---	---	---	---	---	---	---	---	---	---	---
17	---	---	---	---	---	---	---	---	---	---	---	---
18	---	---	---	---	---	---	---	---	---	---	---	---
19	---	---	---	---	---	---	---	---	---	---	---	---
20	---	---	---	---	---	---	---	---	---	---	---	---
21	---	---	---	---	---	---	---	---	---	---	---	---
22	---	---	---	---	---	---	---	---	---	---	---	---
23	---	---	---	---	---	---	---	---	---	---	---	---
24	---	---	---	---	---	---	---	---	---	---	---	---
25	---	---	---	---	---	---	---	---	---	---	---	---
26	---	---	---	---	---	---	---	---	---	---	---	---
27	---	---	---	---	---	---	---	---	---	---	---	---
28	---	---	---	---	---	---	---	---	---	---	---	---
29	---	---	---	---	---	---	---	---	---	---	---	---
30	---	---	---	---	---	---	---	---	---	---	---	---
31	---	---	---	---	---	---	---	---	---	---	---	---
Month	---	---	---	---	---	---	---	---	---	---	---	---

## 06336000 LITTLE MISSOURI RIVER AT MEDORA, ND—Continued

**TEMPERATURE, WATER, DEGREES CELSIUS**  
**WATER YEAR OCTOBER 2012 TO SEPTEMBER 2013**

Day	Max	Min	Mean	Max	Min	Mean	Max	Min	Mean	Max	Min	Mean
	February			March			April			May		
1	---	---	---	---	---	---	---	---	---	12.8	2.9	7.4
2	---	---	---	---	---	---	---	---	---	15.3	5.3	10.1
3	---	---	---	---	---	---	---	---	---	17.3	7.8	12.3
4	---	---	---	---	---	---	---	---	---	17.9	9.2	13.3
5	---	---	---	---	---	---	---	---	---	19.8	9.4	14.5
6	---	---	---	---	---	---	14.0	7.3	10.3	21.4	11.4	16.3
7	---	---	---	---	---	---	13.4	7.9	10.7	23.1	12.5	17.7
8	---	---	---	---	---	---	10.9	2.4	5.4	22.2	14.1	18.0
9	---	---	---	---	---	---	5.2	-0.1	2.4	20.8	12.2	16.3
10	---	---	---	---	---	---	9.2	0.6	4.5	18.0	12.2	15.1
11	---	---	---	---	---	---	9.2	2.5	5.9	19.5	8.7	13.9
12	---	---	---	---	---	---	7.5	4.8	5.9	20.8	10.9	16.1
13	---	---	---	---	---	---	8.1	1.9	5.0	24.4	15.5	19.6
14	---	---	---	---	---	---	6.0	0.4	1.7	22.0	16.3	19.4
15	---	---	---	---	---	---	5.3	-0.1	2.2	23.9	14.6	18.8
16	---	---	---	---	---	---	6.3	2.2	4.2	19.9	15.2	16.9
17	---	---	---	---	---	---	7.7	2.5	5.0	22.0	14.2	17.3
18	---	---	---	---	---	---	9.3	1.8	5.6	24.8	17.4	20.2
19	---	---	---	---	---	---	11.0	5.0	7.6	20.6	13.2	16.3
20	---	---	---	---	---	---	7.9	4.2	5.9	13.3	11.2	12.3
21	---	---	---	---	---	---	7.6	4.6	5.9	11.3	10.9	11.1
22	---	---	---	---	---	---	7.8	3.0	5.1	13.8	10.5	12.0
23	---	---	---	---	---	---	10.0	2.2	5.8	15.6	12.7	14.1
24	---	---	---	---	---	---	8.5	5.3	6.8	---	---	---
25	---	---	---	---	---	---	11.6	4.3	7.8	---	---	---
26	---	---	---	---	---	---	16.3	6.4	11.0	---	---	---
27	---	---	---	---	---	---	17.3	10.2	13.8	---	---	---
28	---	---	---	---	---	---	18.5	12.1	15.3	---	---	---
29	---	---	---	---	---	---	15.7	11.3	13.3	17.7	16.0	17.0
30	---	---	---	---	---	---	12.5	5.8	8.4	17.6	15.3	16.8
31	---	---	---	---	---	---	---	---	---	15.3	13.7	14.2
Month	---	---	---	---	---	---	---	---	---	---	---	---



## 06336000 LITTLE MISSOURI RIVER AT MEDORA, ND—Continued

**TEMPERATURE, WATER, DEGREES CELSIUS**  
**WATER YEAR OCTOBER 2012 TO SEPTEMBER 2013**

Day	Max	Min	Mean	Max	Min	Mean	Max	Min	Mean	Max	Min	Mean
	June			July			August			September		
<b>1</b>	14.1	12.7	13.4	26.8	21.4	24.1	25.0	18.7	21.9	25.5	18.1	21.5
<b>2</b>	15.0	13.1	14.0	28.4	21.8	25.0	22.8	19.6	21.0	26.0	18.8	22.4
<b>3</b>	15.0	14.0	14.4	28.9	22.4	25.7	25.3	18.0	21.4	27.5	21.4	23.9
<b>4</b>	14.1	13.2	13.6	29.9	23.9	26.8	23.1	19.8	21.3	26.9	20.8	23.5
<b>5</b>	14.4	12.9	13.6	28.5	24.1	26.0	25.3	18.6	21.6	29.1	21.1	24.8
<b>6</b>	16.4	13.5	14.8	29.1	22.6	25.4	23.8	20.1	21.9	30.4	23.4	26.6
<b>7</b>	17.9	15.7	16.8	26.8	21.6	24.2	22.7	20.4	21.5	27.2	21.3	24.5
<b>8</b>	18.3	17.5	17.9	29.3	22.4	25.3	24.0	19.1	21.4	24.3	19.7	21.9
<b>9</b>	20.4	17.0	18.5	25.4	22.0	23.7	24.5	19.9	22.1	24.1	19.9	22.1
<b>10</b>	22.8	20.0	21.2	26.8	20.8	23.7	24.5	19.7	21.6	21.5	19.4	20.0
<b>11</b>	23.4	21.0	22.2	28.5	23.1	25.5	24.5	19.1	21.6	20.8	19.4	20.1
<b>12</b>	23.0	20.3	21.8	27.4	23.5	25.2	25.2	20.0	22.4	21.1	19.0	20.1
<b>13</b>	22.6	20.1	21.4	28.8	22.1	25.3	24.4	20.2	22.4	21.3	18.9	20.1
<b>14</b>	22.5	19.8	21.0	25.3	20.7	22.4	23.7	20.8	22.4	21.2	19.6	20.2
<b>15</b>	21.9	18.4	20.2	25.3	20.4	22.4	27.0	20.4	23.4	---	---	---
<b>16</b>	22.4	18.4	20.4	27.3	22.3	24.6	27.4	21.4	24.3	---	---	---
<b>17</b>	23.0	18.6	20.8	28.0	21.3	24.3	26.7	21.5	24.1	---	---	---
<b>18</b>	25.4	18.9	22.0	29.8	23.0	26.1	25.2	21.2	23.3	---	---	---
<b>19</b>	26.4	21.2	23.7	30.0	21.3	25.6	25.8	19.8	22.9	---	---	---
<b>20</b>	26.3	21.7	23.6	28.3	21.9	25.2	25.7	21.2	23.5	16.8	11.1	13.8
<b>21</b>	23.9	19.4	21.0	28.9	21.4	25.1	25.6	20.9	23.0	18.3	12.2	15.1
<b>22</b>	22.0	18.3	20.3	28.7	20.6	24.5	24.2	19.6	21.7	19.9	14.3	17.0
<b>23</b>	22.7	17.0	19.5	28.0	21.1	24.7	27.4	20.5	23.6	18.6	16.2	17.2
<b>24</b>	23.5	18.3	20.9	30.0	21.3	25.4	28.6	23.0	25.6	18.5	12.9	15.8
<b>25</b>	24.5	21.2	22.8	26.6	22.2	24.5	27.1	21.4	24.5	17.9	14.0	16.0
<b>26</b>	24.9	21.4	23.1	23.3	18.1	20.5	28.7	21.7	25.1	16.4	14.0	15.0
<b>27</b>	25.4	21.3	23.4	24.4	16.8	20.5	26.6	23.8	24.9	14.0	11.9	12.5
<b>28</b>	25.8	20.8	23.2	22.9	16.6	19.6	29.2	22.1	25.3	14.4	9.9	12.1
<b>29</b>	25.3	20.8	23.1	23.8	18.2	20.4	29.4	23.1	26.2	15.5	10.6	13.0
<b>30</b>	26.4	20.9	23.5	23.6	18.1	20.7	29.4	22.4	26.0	16.2	12.3	14.1
<b>31</b>	---	---	---	26.7	18.9	22.8	26.6	21.4	23.7	---	---	---
<b>Month</b>	26.4	12.7	19.9	30.0	16.6	24.0	29.4	18.0	23.1	---	---	---

06336000 LITTLE MISSOURI RIVER AT MEDORA, ND—Continued

SPECIFIC CONDUCTANCE, WATER, UNFILTERED, MICROSIEMENS PER CENTIMETER AT 25 DEGREES CELSIUS  
WATER YEAR OCTOBER 2012 TO SEPTEMBER 2013

Day	Max	Min	Mean	Max	Min	Mean	Max	Min	Mean	Max	Min	Mean
	October			November			December			January		
1	---	---	---	---	---	---	---	---	---	---	---	---
2	---	---	---	---	---	---	---	---	---	---	---	---
3	---	---	---	---	---	---	---	---	---	---	---	---
4	---	---	---	---	---	---	---	---	---	---	---	---
5	---	---	---	---	---	---	---	---	---	---	---	---
6	---	---	---	---	---	---	---	---	---	---	---	---
7	---	---	---	---	---	---	---	---	---	---	---	---
8	---	---	---	---	---	---	---	---	---	---	---	---
9	---	---	---	---	---	---	---	---	---	---	---	---
10	---	---	---	---	---	---	---	---	---	---	---	---
11	---	---	---	---	---	---	---	---	---	---	---	---
12	---	---	---	---	---	---	---	---	---	---	---	---
13	---	---	---	---	---	---	---	---	---	---	---	---
14	---	---	---	---	---	---	---	---	---	---	---	---
15	---	---	---	---	---	---	---	---	---	---	---	---
16	---	---	---	---	---	---	---	---	---	---	---	---
17	---	---	---	---	---	---	---	---	---	---	---	---
18	---	---	---	---	---	---	---	---	---	---	---	---
19	---	---	---	---	---	---	---	---	---	---	---	---
20	---	---	---	---	---	---	---	---	---	---	---	---
21	---	---	---	---	---	---	---	---	---	---	---	---
22	---	---	---	---	---	---	---	---	---	---	---	---
23	---	---	---	---	---	---	---	---	---	---	---	---
24	---	---	---	---	---	---	---	---	---	---	---	---
25	---	---	---	---	---	---	---	---	---	---	---	---
26	---	---	---	---	---	---	---	---	---	---	---	---
27	---	---	---	---	---	---	---	---	---	---	---	---
28	---	---	---	---	---	---	---	---	---	---	---	---
29	---	---	---	---	---	---	---	---	---	---	---	---
30	---	---	---	---	---	---	---	---	---	---	---	---
31	---	---	---	---	---	---	---	---	---	---	---	---
Month	---	---	---	---	---	---	---	---	---	---	---	---

## 06336000 LITTLE MISSOURI RIVER AT MEDORA, ND—Continued

**SPECIFIC CONDUCTANCE, WATER, UNFILTERED, MICROSIEMENS PER CENTIMETER AT 25 DEGREES CELSIUS  
WATER YEAR OCTOBER 2012 TO SEPTEMBER 2013**

Day	Max	Min	Mean	Max	Min	Mean	Max	Min	Mean	Max	Min	Mean
	February			March			April			May		
1	---	---	---	---	---	---	---	---	---	2,400	2,320	2,350
2	---	---	---	---	---	---	---	---	---	2,430	2,400	2,420
3	---	---	---	---	---	---	---	---	---	2,450	2,420	2,430
4	---	---	---	---	---	---	---	---	---	2,530	2,450	2,480
5	---	---	---	---	---	---	---	---	---	2,580	2,530	2,550
6	---	---	---	---	---	---	2,020	1,960	1,980	2,640	2,560	2,600
7	---	---	---	---	---	---	2,090	2,020	2,060	2,690	2,640	2,670
8	---	---	---	---	---	---	2,100	2,040	2,070	2,730	2,670	2,700
9	---	---	---	---	---	---	2,090	2,030	2,060	2,780	2,730	2,750
10	---	---	---	---	---	---	2,080	1,860	2,050	2,820	2,780	2,800
11	---	---	---	---	---	---	1,980	1,870	1,930	2,870	2,820	2,840
12	---	---	---	---	---	---	2,050	1,970	2,020	2,930	2,860	2,890
13	---	---	---	---	---	---	2,060	2,000	2,030	2,920	2,900	2,910
14	---	---	---	---	---	---	2,040	1,910	1,970	2,940	2,900	2,910
15	---	---	---	---	---	---	1,980	1,910	1,950	2,960	2,900	2,930
16	---	---	---	---	---	---	2,000	1,800	1,920	---	---	---
17	---	---	---	---	---	---	1,840	1,800	1,820	2,860	2,780	2,820
18	---	---	---	---	---	---	1,840	1,790	1,820	2,840	2,800	2,820
19	---	---	---	---	---	---	1,890	1,790	1,870	2,800	1,980	2,600
20	---	---	---	---	---	---	1,920	1,880	1,900	---	---	---
21	---	---	---	---	---	---	1,920	1,750	1,850	---	---	---
22	---	---	---	---	---	---	1,770	1,570	1,650	1,240	1,030	1,090
23	---	---	---	---	---	---	1,800	1,660	1,740	---	---	---
24	---	---	---	---	---	---	1,800	1,740	1,770	---	---	---
25	---	---	---	---	---	---	1,830	1,760	1,800	---	---	---
26	---	---	---	---	---	---	1,890	1,810	1,850	---	---	---
27	---	---	---	---	---	---	2,060	1,890	1,950	---	---	---
28	---	---	---	---	---	---	2,190	2,060	2,130	---	---	---
29	---	---	---	---	---	---	2,280	2,190	2,230	1,270	850	952
30	---	---	---	---	---	---	2,320	2,280	2,300	1,080	939	985
31	---	---	---	---	---	---	---	---	---	1,120	908	1,050
Month	---	---	---	---	---	---	---	---	---	---	---	---

## 06336000 LITTLE MISSOURI RIVER AT MEDORA, ND—Continued

**SPECIFIC CONDUCTANCE, WATER, UNFILTERED, MICROSIEMENS PER CENTIMETER AT 25 DEGREES CELSIUS  
WATER YEAR OCTOBER 2012 TO SEPTEMBER 2013**

Day	Max	Min	Mean	Max	Min	Mean	Max	Min	Mean	Max	Min	Mean
	June			July			August			September		
1	---	---	---	1,560	1,510	1,530	2,430	2,390	2,410	1,600	1,530	1,560
2	912	835	870	1,620	1,560	1,580	2,450	2,420	2,430	1,680	1,600	1,640
3	1,080	900	1,000	1,680	1,620	1,640	2,450	2,410	2,440	1,740	1,680	1,700
4	1,130	1,080	1,100	1,730	1,680	1,710	2,410	1,790	2,170	1,810	1,740	1,780
5	1,100	974	1,040	1,740	1,700	1,730	2,050	1,750	1,880	1,880	1,810	1,850
6	991	892	940	1,700	1,600	1,650	1,840	1,600	1,780	1,920	1,880	1,900
7	942	865	900	1,600	1,570	1,590	1,600	1,500	1,550	1,980	1,920	1,950
8	865	825	844	1,610	1,580	1,600	1,500	1,310	1,390	1,970	1,960	1,960
9	927	859	882	1,620	1,560	1,600	1,310	1,100	1,160	---	---	---
10	1,020	927	965	1,600	1,470	1,550	1,180	1,060	1,090	---	---	---
11	1,090	1,020	1,050	1,470	1,230	1,310	1,320	1,180	1,250	694	510	591
12	1,200	1,090	1,130	1,380	1,290	1,330	1,460	1,320	1,390	674	581	606
13	1,260	1,190	1,240	1,490	1,310	1,420	1,580	1,460	1,520	682	610	641
14	1,240	1,170	1,200	1,520	1,480	1,500	1,500	1,350	1,390	753	682	714
15	1,400	1,160	1,230	1,660	1,510	1,580	1,350	1,280	1,310	---	---	---
16	1,690	1,400	1,600	1,770	1,660	1,740	1,280	1,210	1,240	---	---	---
17	1,660	1,500	1,570	1,800	1,550	1,730	1,220	1,200	1,210	---	---	---
18	1,630	1,530	1,550	1,580	1,450	1,500	1,250	1,210	1,220	---	---	---
19	1,610	1,540	1,570	1,760	1,580	1,680	1,340	1,250	1,310	---	---	---
20	1,660	1,610	1,640	2,000	1,760	1,860	1,340	1,310	1,320	1,240	1,100	1,180
21	1,700	1,660	1,680	2,080	2,000	2,040	1,330	1,320	1,330	1,270	1,240	1,260
22	1,720	1,610	1,690	2,150	2,080	2,110	1,320	1,210	1,270	1,310	1,270	1,290
23	1,750	1,650	1,690	2,190	2,150	2,170	1,210	1,130	1,160	1,360	1,310	1,330
24	1,780	1,610	1,740	2,210	2,170	2,190	1,130	1,080	1,100	1,390	1,360	1,380
25	1,610	1,380	1,470	2,230	2,190	2,210	1,080	1,070	1,080	1,410	1,390	1,400
26	1,380	1,360	1,370	2,250	2,230	2,240	1,140	1,080	1,100	1,470	1,410	1,430
27	1,440	1,380	1,410	2,280	2,240	2,250	1,190	1,140	1,160	1,510	1,470	1,490
28	1,450	1,430	1,440	2,320	2,270	2,290	1,300	1,190	1,250	1,560	1,510	1,540
29	1,480	1,450	1,460	2,360	2,320	2,340	1,390	1,300	1,350	1,600	1,560	1,580
30	1,520	1,480	1,490	2,360	2,330	2,340	1,460	1,390	1,420	1,650	1,600	1,620
31	---	---	---	2,390	2,350	2,370	1,530	1,460	1,500	---	---	---
<b>Month</b>	---	---	---	2,390	1,230	1,820	2,450	1,060	1,460	---	---	---

06336000 LITTLE MISSOURI RIVER AT MEDORA, ND—Continued

pH, WATER, UNFILTERED, FIELD, STANDARD UNITS  
WATER YEAR OCTOBER 2012 TO SEPTEMBER 2013

Day	Max	Min	Median	Max	Min	Median	Max	Min	Median	Max	Min	Median
	October			November			December			January		
1	---	---	---	---	---	---	---	---	---	---	---	---
2	---	---	---	---	---	---	---	---	---	---	---	---
3	---	---	---	---	---	---	---	---	---	---	---	---
4	---	---	---	---	---	---	---	---	---	---	---	---
5	---	---	---	---	---	---	---	---	---	---	---	---
6	---	---	---	---	---	---	---	---	---	---	---	---
7	---	---	---	---	---	---	---	---	---	---	---	---
8	---	---	---	---	---	---	---	---	---	---	---	---
9	---	---	---	---	---	---	---	---	---	---	---	---
10	---	---	---	---	---	---	---	---	---	---	---	---
11	---	---	---	---	---	---	---	---	---	---	---	---
12	---	---	---	---	---	---	---	---	---	---	---	---
13	---	---	---	---	---	---	---	---	---	---	---	---
14	---	---	---	---	---	---	---	---	---	---	---	---
15	---	---	---	---	---	---	---	---	---	---	---	---
16	---	---	---	---	---	---	---	---	---	---	---	---
17	---	---	---	---	---	---	---	---	---	---	---	---
18	---	---	---	---	---	---	---	---	---	---	---	---
19	---	---	---	---	---	---	---	---	---	---	---	---
20	---	---	---	---	---	---	---	---	---	---	---	---
21	---	---	---	---	---	---	---	---	---	---	---	---
22	---	---	---	---	---	---	---	---	---	---	---	---
23	---	---	---	---	---	---	---	---	---	---	---	---
24	---	---	---	---	---	---	---	---	---	---	---	---
25	---	---	---	---	---	---	---	---	---	---	---	---
26	---	---	---	---	---	---	---	---	---	---	---	---
27	---	---	---	---	---	---	---	---	---	---	---	---
28	---	---	---	---	---	---	---	---	---	---	---	---
29	---	---	---	---	---	---	---	---	---	---	---	---
30	---	---	---	---	---	---	---	---	---	---	---	---
31	---	---	---	---	---	---	---	---	---	---	---	---
Max	---	---	---	---	---	---	---	---	---	---	---	---
Min	---	---	---	---	---	---	---	---	---	---	---	---

## 06336000 LITTLE MISSOURI RIVER AT MEDORA, ND—Continued

pH, WATER, UNFILTERED, FIELD, STANDARD UNITS  
WATER YEAR OCTOBER 2012 TO SEPTEMBER 2013

Day	Max	Min	Median	Max	Min	Median	Max	Min	Median	Max	Min	Median
	February			March			April			May		
1	---	---	---	---	---	---	---	---	---	8.7	8.7	8.7
2	---	---	---	---	---	---	---	---	---	8.7	8.7	8.7
3	---	---	---	---	---	---	---	---	---	8.7	8.7	8.7
4	---	---	---	---	---	---	---	---	---	8.8	8.7	8.8
5	---	---	---	---	---	---	---	---	---	8.8	8.7	8.7
6	---	---	---	---	---	---	8.5	8.5	8.5	8.7	8.6	8.7
7	---	---	---	---	---	---	8.6	8.5	8.5	8.6	8.6	8.6
8	---	---	---	---	---	---	8.6	8.6	8.6	8.6	8.6	8.6
9	---	---	---	---	---	---	8.6	8.6	8.6	8.6	8.6	8.6
10	---	---	---	---	---	---	8.6	8.6	8.6	8.7	8.6	8.6
11	---	---	---	---	---	---	8.6	8.6	8.6	8.7	8.6	8.7
12	---	---	---	---	---	---	8.6	8.6	8.6	8.7	8.6	8.6
13	---	---	---	---	---	---	8.6	8.6	8.6	8.6	8.6	8.6
14	---	---	---	---	---	---	8.7	8.6	8.7	8.7	8.6	8.6
15	---	---	---	---	---	---	8.7	8.6	8.7	8.7	8.6	8.6
16	---	---	---	---	---	---	8.7	8.6	8.7	8.7	8.6	8.7
17	---	---	---	---	---	---	8.6	8.6	8.6	8.7	8.7	8.7
18	---	---	---	---	---	---	8.6	8.6	8.6	8.7	8.7	8.7
19	---	---	---	---	---	---	8.6	8.6	8.6	8.8	8.4	8.7
20	---	---	---	---	---	---	8.6	8.6	8.6	8.4	8.2	8.3
21	---	---	---	---	---	---	8.6	8.6	8.6	8.3	8.2	8.2
22	---	---	---	---	---	---	8.6	8.6	8.6	8.3	8.2	8.3
23	---	---	---	---	---	---	8.6	8.6	8.6	8.2	8.2	8.2
24	---	---	---	---	---	---	8.6	8.6	8.6	---	---	---
25	---	---	---	---	---	---	8.6	8.6	8.6	---	---	---
26	---	---	---	---	---	---	8.6	8.5	8.6	---	---	---
27	---	---	---	---	---	---	8.6	8.5	8.6	---	---	---
28	---	---	---	---	---	---	8.6	8.6	8.6	---	---	---
29	---	---	---	---	---	---	8.6	8.6	8.6	8.2	8.0	8.2
30	---	---	---	---	---	---	8.7	8.6	8.7	8.2	8.1	8.1
31	---	---	---	---	---	---	---	---	---	8.2	8.0	8.1
Max	---	---	---	---	---	---	---	---	---	---	---	---
Min	---	---	---	---	---	---	---	---	---	---	---	---

## 06336000 LITTLE MISSOURI RIVER AT MEDORA, ND—Continued

pH, WATER, UNFILTERED, FIELD, STANDARD UNITS  
WATER YEAR OCTOBER 2012 TO SEPTEMBER 2013

Day	Max	Min	Median	Max	Min	Median	Max	Min	Median	Max	Min	Median
	June			July			August			September		
1	8.1	8.0	8.1	8.4	8.3	8.4	8.5	8.5	8.5	8.3	8.0	8.2
2	8.1	8.0	8.1	8.5	8.4	8.4	8.5	8.5	8.5	8.1	7.8	8.0
3	8.1	8.0	8.0	8.5	8.4	8.5	8.6	8.5	8.6	8.1	7.8	7.9
4	---	---	---	8.5	8.5	8.5	8.6	8.2	8.6	8.2	7.9	8.1
5	8.1	8.1	8.1	8.6	8.5	8.5	8.3	8.1	8.2	8.3	8.1	8.2
6	8.1	8.0	8.0	8.6	8.5	8.5	8.4	8.2	8.4	8.3	8.2	8.3
7	8.0	8.0	8.0	8.6	8.5	8.6	8.2	8.0	8.1	8.6	8.3	8.5
8	8.0	8.0	8.0	8.6	8.5	8.6	8.1	8.0	8.0	8.6	8.5	8.5
9	8.0	8.0	8.0	8.6	8.4	8.5	8.2	8.0	8.2	8.6	8.0	8.4
10	8.0	8.0	8.0	8.5	8.3	8.4	8.4	8.2	8.2	8.0	8.0	8.0
11	8.1	8.0	8.0	8.3	8.2	8.3	8.3	8.1	8.2	8.1	8.0	8.0
12	8.1	8.1	8.1	8.3	8.3	8.3	8.5	8.2	8.3	8.1	8.0	8.0
13	8.2	8.1	8.2	8.3	8.2	8.3	8.7	8.5	8.6	8.2	8.1	8.1
14	8.2	8.2	8.2	8.4	8.3	8.3	8.6	8.4	8.5	8.2	8.2	8.2
15	8.3	8.2	8.2	8.4	8.3	8.4	8.4	8.4	8.4	---	---	---
16	8.3	8.2	8.3	8.6	8.3	8.4	8.6	8.4	8.5	---	---	---
17	8.3	8.3	8.3	8.8	8.5	8.6	8.6	8.5	8.5	---	---	---
18	8.4	8.3	8.4	8.7	8.6	8.6	8.6	8.5	8.6	---	---	---
19	8.5	8.4	8.4	8.6	8.4	8.5	8.6	8.4	8.5	---	---	---
20	8.5	8.5	8.5	8.5	8.5	8.5	8.5	8.3	8.4	8.4	8.3	8.4
21	8.5	8.5	8.5	8.5	8.5	8.5	8.5	8.4	8.5	8.5	8.3	8.4
22	8.6	8.5	8.5	8.5	8.5	8.5	8.5	8.4	8.4	8.4	8.4	8.4
23	8.5	8.4	8.5	8.5	8.5	8.5	8.6	8.4	8.5	8.5	8.4	8.4
24	8.4	8.2	8.3	8.5	8.4	8.5	8.8	8.6	8.7	8.6	8.5	8.5
25	8.2	8.1	8.1	8.5	8.4	8.5	8.8	8.6	8.7	8.5	8.5	8.5
26	8.3	8.1	8.2	8.5	8.5	8.5	8.6	8.5	8.6	8.5	8.4	8.5
27	8.3	8.3	8.3	8.5	8.4	8.5	8.6	8.5	8.5	8.5	8.5	8.5
28	8.3	8.2	8.3	8.5	8.5	8.5	8.6	8.5	8.5	8.5	8.4	8.5
29	8.4	8.3	8.3	8.5	8.5	8.5	8.6	8.5	8.6	8.4	8.4	8.4
30	8.4	8.3	8.3	8.5	8.5	8.5	8.6	8.5	8.6	8.4	8.4	8.4
31	---	---	---	8.5	8.4	8.5	8.6	8.3	8.4	---	---	---
<b>Max</b>	---	---	---	8.8	8.6	8.6	8.8	8.6	8.7	---	---	---
<b>Min</b>	---	---	---	8.3	8.2	8.3	8.1	8.0	8.0	---	---	---

06336000 LITTLE MISSOURI RIVER AT MEDORA, ND—Continued

DISSOLVED OXYGEN, WATER, UNFILTERED, MILLIGRAMS PER LITER  
WATER YEAR OCTOBER 2012 TO SEPTEMBER 2013

Day	Max	Min	Mean	Max	Min	Mean	Max	Min	Mean	Max	Min	Mean
	October			November			December			January		
1	---	---	---	---	---	---	---	---	---	---	---	---
2	---	---	---	---	---	---	---	---	---	---	---	---
3	---	---	---	---	---	---	---	---	---	---	---	---
4	---	---	---	---	---	---	---	---	---	---	---	---
5	---	---	---	---	---	---	---	---	---	---	---	---
6	---	---	---	---	---	---	---	---	---	---	---	---
7	---	---	---	---	---	---	---	---	---	---	---	---
8	---	---	---	---	---	---	---	---	---	---	---	---
9	---	---	---	---	---	---	---	---	---	---	---	---
10	---	---	---	---	---	---	---	---	---	---	---	---
11	---	---	---	---	---	---	---	---	---	---	---	---
12	---	---	---	---	---	---	---	---	---	---	---	---
13	---	---	---	---	---	---	---	---	---	---	---	---
14	---	---	---	---	---	---	---	---	---	---	---	---
15	---	---	---	---	---	---	---	---	---	---	---	---
16	---	---	---	---	---	---	---	---	---	---	---	---
17	---	---	---	---	---	---	---	---	---	---	---	---
18	---	---	---	---	---	---	---	---	---	---	---	---
19	---	---	---	---	---	---	---	---	---	---	---	---
20	---	---	---	---	---	---	---	---	---	---	---	---
21	---	---	---	---	---	---	---	---	---	---	---	---
22	---	---	---	---	---	---	---	---	---	---	---	---
23	---	---	---	---	---	---	---	---	---	---	---	---
24	---	---	---	---	---	---	---	---	---	---	---	---
25	---	---	---	---	---	---	---	---	---	---	---	---
26	---	---	---	---	---	---	---	---	---	---	---	---
27	---	---	---	---	---	---	---	---	---	---	---	---
28	---	---	---	---	---	---	---	---	---	---	---	---
29	---	---	---	---	---	---	---	---	---	---	---	---
30	---	---	---	---	---	---	---	---	---	---	---	---
31	---	---	---	---	---	---	---	---	---	---	---	---
Month	---	---	---	---	---	---	---	---	---	---	---	---



06336000 LITTLE MISSOURI RIVER AT MEDORA, ND—Continued

DISSOLVED OXYGEN, WATER, UNFILTERED, MILLIGRAMS PER LITER  
WATER YEAR OCTOBER 2012 TO SEPTEMBER 2013

Day	Max	Min	Mean	Max	Min	Mean	Max	Min	Mean	Max	Min	Mean
	February			March			April			May		
1	---	---	---	---	---	---	---	---	---	11.8	10.0	11.0
2	---	---	---	---	---	---	---	---	---	11.4	9.5	10.6
3	---	---	---	---	---	---	---	---	---	10.8	9.2	10.0
4	---	---	---	---	---	---	---	---	---	10.8	9.1	9.8
5	---	---	---	---	---	---	---	---	---	10.6	8.7	9.7
6	---	---	---	---	---	---	10.2	9.2	9.8	10.0	8.2	9.2
7	---	---	---	---	---	---	9.9	9.2	9.6	9.4	7.7	8.6
8	---	---	---	---	---	---	11.8	9.3	10.8	9.2	7.7	8.4
9	---	---	---	---	---	---	12.8	11.6	12.3	9.6	8.0	8.8
10	---	---	---	---	---	---	12.5	10.9	11.9	9.3	8.2	8.8
11	---	---	---	---	---	---	11.7	10.5	11.2	10.3	8.7	9.5
12	---	---	---	---	---	---	11.2	10.4	10.9	9.7	8.0	9.0
13	---	---	---	---	---	---	11.7	10.6	11.2	8.9	7.2	8.1
14	---	---	---	---	---	---	12.5	10.7	11.8	8.6	7.1	7.8
15	---	---	---	---	---	---	12.8	11.6	12.4	9.3	7.6	8.4
16	---	---	---	---	---	---	12.0	11.4	11.7	8.9	7.5	8.2
17	---	---	---	---	---	---	11.9	11.0	11.5	9.9	8.0	8.9
18	---	---	---	---	---	---	11.9	10.6	11.3	9.4	7.5	8.3
19	---	---	---	---	---	---	11.0	10.2	10.7	---	---	---
20	---	---	---	---	---	---	11.3	10.2	10.9	---	---	---
21	---	---	---	---	---	---	11.3	10.8	11.1	---	---	---
22	---	---	---	---	---	---	11.7	11.0	11.4	8.8	8.3	8.6
23	---	---	---	---	---	---	11.8	10.6	11.3	8.5	8.3	8.4
24	---	---	---	---	---	---	11.0	10.6	10.8	---	---	---
25	---	---	---	---	---	---	11.2	9.9	10.6	---	---	---
26	---	---	---	---	---	---	10.4	8.8	9.8	---	---	---
27	---	---	---	---	---	---	9.4	8.3	9.0	---	---	---
28	---	---	---	---	---	---	9.1	8.3	8.7	---	---	---
29	---	---	---	---	---	---	9.3	8.3	8.9	7.0	5.3	6.6
30	---	---	---	---	---	---	10.7	8.9	10.1	7.9	6.9	7.4
31	---	---	---	---	---	---	---	---	---	7.9	6.8	7.6
Month	---	---	---	---	---	---	---	---	---	---	---	---

## 06336000 LITTLE MISSOURI RIVER AT MEDORA, ND—Continued

DISSOLVED OXYGEN, WATER, UNFILTERED, MILLIGRAMS PER LITER  
WATER YEAR OCTOBER 2012 TO SEPTEMBER 2013

Day	Max	Min	Mean	Max	Min	Mean	Max	Min	Mean	Max	Min	Mean
	June			July			August			September		
1	---	---	---	7.2	5.8	6.5	8.4	7.0	7.7	8.9	7.1	7.9
2	7.8	7.3	7.7	7.8	6.7	7.2	8.3	7.1	7.7	8.8	7.0	7.8
3	8.2	7.8	8.0	7.8	6.6	7.2	8.5	7.2	7.9	8.5	6.7	7.5
4	8.4	8.1	8.3	7.2	6.4	6.8	7.5	6.5	7.2	8.6	6.6	7.4
5	8.4	8.2	8.3	7.2	6.2	6.7	7.4	6.5	6.9	8.7	6.6	7.4
6	8.4	8.1	8.3	---	---	---	---	---	---	8.7	6.2	7.1
7	8.1	7.8	8.0	---	---	---	---	---	---	8.4	6.1	7.0
8	7.8	7.6	7.7	---	---	---	---	---	---	9.2	6.6	7.8
9	7.8	7.4	7.7	---	---	---	7.4	6.6	7.1	---	---	---
10	7.4	7.1	7.3	7.0	6.2	6.7	7.6	6.8	7.2	---	---	---
11	7.2	7.0	7.1	6.3	6.1	6.2	---	---	---	6.9	5.8	6.4
12	7.4	7.0	7.3	6.5	6.0	6.3	---	---	---	7.4	6.9	7.2
13	7.6	7.2	7.4	6.8	6.0	6.5	7.8	6.6	7.3	7.6	7.3	7.5
14	7.5	7.2	7.4	7.5	6.4	7.3	7.8	7.1	7.4	7.6	7.4	7.5
15	7.8	7.2	7.5	7.6	7.0	7.4	7.6	6.8	7.3	---	---	---
16	7.8	7.4	7.6	8.3	6.9	7.6	8.1	6.8	7.5	---	---	---
17	7.9	7.4	7.6	10.3	7.3	8.5	7.9	7.0	7.4	---	---	---
18	8.2	7.2	7.7	7.9	6.7	7.3	8.3	7.0	7.6	---	---	---
19	7.5	6.9	7.2	7.7	6.6	7.1	8.2	6.9	7.4	---	---	---
20	7.5	6.9	7.2	7.7	6.6	7.1	7.4	6.8	7.1	9.1	8.5	8.9
21	8.0	7.0	7.5	7.6	6.6	7.0	7.6	6.9	7.3	9.2	8.2	8.7
22	7.9	7.4	7.7	7.7	6.6	7.1	7.9	7.2	7.5	8.4	7.8	8.2
23	8.2	7.2	7.8	7.6	6.7	7.1	8.0	7.0	7.6	8.9	7.8	8.2
24	7.6	6.6	7.1	7.7	6.5	7.1	9.4	6.9	7.8	9.6	8.2	8.8
25	6.7	6.5	6.6	7.6	6.4	7.1	8.0	6.8	7.3	9.0	8.1	8.5
26	7.0	6.5	6.7	8.4	7.1	7.8	7.8	6.6	7.2	9.1	8.1	8.5
27	7.4	6.5	7.0	8.4	7.4	7.9	7.6	6.5	7.0	9.5	8.6	9.0
28	7.5	6.7	7.1	8.6	7.3	7.9	8.0	6.5	7.2	9.6	8.9	9.2
29	7.4	6.3	7.0	8.4	7.4	7.9	8.4	6.4	7.3	9.3	8.5	9.0
30	7.4	6.3	6.9	8.6	7.4	7.9	8.5	6.4	7.3	9.0	8.4	8.6
31	---	---	---	8.4	7.1	7.7	8.4	6.4	7.3	---	---	---
Month	---	---	---	---	---	---	---	---	---	---	---	---