

Water-Data Report 2013

04249000 OSWEGO RIVER AT LOCK 7, OSWEGO, NY

Oswego Basin
Oswego Subbasin

LOCATION.--Lat 43°27'06", long 76°30'19" referenced to North American Datum of 1983, Oswego County, NY, Hydrologic Unit 04140203, on right bank at New York State Barge Canal (Oswego Canal) Lock 7 in Oswego, 0.8 mi upstream from mouth.

DRAINAGE AREA.--5,100 mi².

SURFACE-WATER RECORDS

PERIOD OF RECORD.--October 1900 to April 1906, October 1933 to current year. Monthly discharge only for some periods, published in WSP 1307. Prior to January 1904, published as "above Minetto" or "near Minetto." January 1904 to April 1906, published as "at Battle Island." Records for April 1897 to September 1900, published in WSP 65 and for October 1927 to September 1928, published in WSP 644, have been found to be unreliable and should not be used.

REVISED RECORDS.--WDR NY 78-1: Drainage area.

GAGE.--Water-stage recorder. Datum of gage is 245.12 ft above NGVD of 1929. Prior to October 1933, nonrecording gage at site about 6 mi upstream at different datum.

COOPERATION.--Records of lockages at Lock 7 furnished by New York State Thruway Authority, record of elevations of Lake Ontario by U.S. Army Corps of Engineers, daily discharge records for Oswego River High Dam upstream by Niagara Mohawk Power Corp.

REMARKS.--Records good. No estimated daily discharges. Prior to 1933 and subsequent to 1972, flow in Oswego (Barge) Canal not included. A large amount of natural storage and some artificial regulation is afforded by the many large lakes and the Erie (Barge) and Oswego (Barge) Canal systems in the river basin. Large diurnal fluctuations at low and medium flow caused by powerplants upstream from station. Oswego River basin receives water from Erie (Barge) Canal through Lock 32 near Pittsford. Water may be diverted into or received from Mohawk River basin through Erie (Barge) Canal between New London and Utica. During part of year, entire flow from 45.5 mi² of Mud Creek drainage area may be diverted from Chemung River basin into Keuka Lake in Oswego River basin. Nearly all of the flow from 14 mi² of the Tioughnioga River basin may be diverted into De Ruyter Reservoir, in Oswego River basin. Telephone and satellite gage-height telemeters at station.

EXTREMES FOR PERIOD OF RECORD.--Maximum discharge, 37,500 ft³/s, Mar. 28, 1936, includes daily mean discharge of canals; maximum gage height, 13.46 ft, Apr. 10, 1940; minimum discharge (river only), 30 ft³/s, Nov. 6, 1944.

EXTREMES FOR CURRENT YEAR.--Maximum discharge, 20,900 ft³/s, June 14, gage height, 9.33 ft; minimum discharge, 286 ft³/s, Aug. 25, gage height, 1.61 ft.

04249000 OSWEGO RIVER AT LOCK 7, OSWEGO, NY—Continued

DISCHARGE, CUBIC FEET PER SECOND
WATER YEAR OCTOBER 2012 TO SEPTEMBER 2013
DAILY MEAN VALUES

Day	Oct	Nov	Dec	Jan	Feb	Mar	Apr	May	Jun	Jul	Aug	Sep
1	852	3,020	2,190	10,700	12,000	8,400	3,540	2,570	9,620	10,900	9,080	2,390
2	1,680	2,160	2,430	10,500	12,700	9,370	3,570	2,510	6,100	11,800	8,670	3,030
3	1,740	1,850	2,150	10,700	12,100	8,680	4,330	2,000	7,040	11,500	5,630	3,750
4	1,470	2,110	4,850	9,910	10,800	8,580	7,880	1,850	6,300	11,700	5,190	2,920
5	888	1,890	7,580	9,750	10,500	7,670	8,400	2,560	7,880	13,300	3,080	3,850
6	709	4,190	8,910	9,710	10,400	7,230	7,830	2,430	8,070	14,000	1,450	4,690
7	1,070	3,920	8,920	10,400	10,000	6,920	7,200	2,170	15,300	13,800	593	4,620
8	2,040	1,940	8,470	10,500	9,820	6,750	6,560	4,170	14,800	12,300	617	3,940
9	1,600	4,270	8,590	10,600	9,430	6,230	6,500	3,840	14,700	11,800	2,190	4,180
10	2,480	3,560	8,310	10,100	10,100	6,780	7,180	4,430	14,800	12,400	5,800	4,360
11	3,680	3,340	9,580	9,850	10,100	7,410	10,900	5,470	14,800	12,300	4,840	5,010
12	3,020	2,370	10,300	10,200	10,100	11,100	15,000	5,190	13,700	11,900	5,450	4,830
13	2,230	3,340	9,360	11,800	9,800	11,700	17,300	6,300	15,600	11,000	5,120	4,360
14	2,250	3,660	9,140	14,700	9,300	11,100	17,200	5,450	18,900	4,740	4,270	3,120
15	3,890	3,520	8,950	14,500	9,570	9,810	18,200	3,990	18,100	5,780	3,520	4,630
16	3,350	2,680	8,390	13,200	9,430	9,270	17,400	2,040	17,200	4,580	3,590	3,590
17	3,540	2,380	8,460	12,500	9,150	8,380	16,800	1,950	16,700	3,980	2,740	1,520
18	4,320	2,090	9,260	11,800	9,220	7,440	16,400	2,350	14,200	3,240	2,560	1,490
19	5,930	2,040	11,200	11,400	8,910	6,780	16,000	2,530	11,000	4,020	1,810	2,000
20	5,020	2,000	11,600	10,500	7,690	6,870	14,900	2,530	10,500	4,020	2,790	1,910
21	5,070	4,220	12,900	10,400	6,550	6,870	14,700	2,840	8,790	2,850	2,550	1,900
22	4,550	3,170	13,600	10,300	5,380	6,890	14,300	4,630	8,720	4,100	2,340	1,980
23	4,860	2,450	13,200	9,710	5,460	6,840	14,100	7,700	5,630	3,450	2,780	6,210
24	3,340	2,660	13,000	9,680	5,720	6,450	13,000	10,200	3,720	3,110	1,940	2,890
25	1,410	2,610	12,600	8,920	5,860	4,410	13,100	9,950	5,930	2,200	682	2,400
26	2,600	2,790	12,400	6,770	5,830	3,450	12,100	8,910	8,850	1,340	1,830	2,490
27	3,760	4,080	11,700	4,830	6,030	3,340	9,480	4,040	11,500	1,730	2,790	2,480
28	4,980	6,160	11,500	4,930	7,130	4,030	9,020	5,260	11,800	2,490	3,430	1,810
29	5,350	5,980	10,900	5,390	---	3,910	5,740	7,200	11,800	4,640	3,710	1,610
30	6,780	4,270	10,600	7,640	---	3,640	2,450	11,300	10,600	3,140	2,800	1,720
31	5,130	---	10,400	12,600	---	3,280	---	11,200	---	5,920	2,410	---
Total	99,589	94,720	291,440	314,490	249,080	219,580	331,080	149,560	342,650	224,030	106,252	95,680
Mean	3,213	3,157	9,401	10,140	8,896	7,083	11,040	4,825	11,420	7,227	3,427	3,189
Max	6,780	6,160	13,600	14,700	12,700	11,700	18,200	11,300	18,900	14,000	9,080	6,210
Min	709	1,850	2,150	4,830	5,380	3,280	2,450	1,850	3,720	1,340	593	1,490

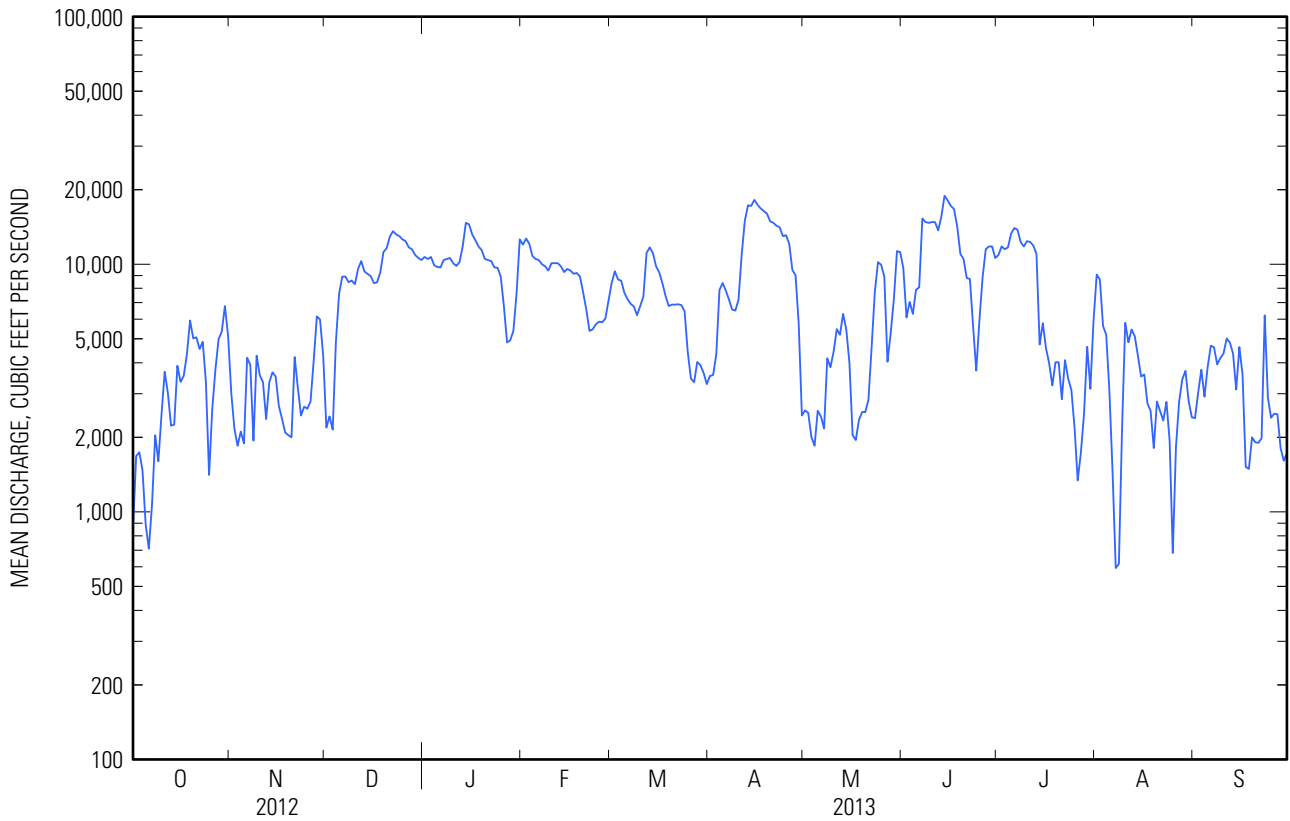
STATISTICS OF MONTHLY MEAN DATA FOR WATER YEARS 1934 - 2013, BY WATER YEAR (WY)

	Oct	Nov	Dec	Jan	Feb	Mar	Apr	May	Jun	Jul	Aug	Sep
Mean	4,121	6,379	8,912	8,320	8,073	11,660	12,990	8,159	5,134	3,484	2,566	2,806
Max	17,950	16,070	17,920	16,970	15,130	21,720	30,250	20,350	17,000	19,660	8,951	12,360
(WY)	(1978)	(1978)	(1978)	(1998)	(1976)	(1979)	(1993)	(1943)	(1947)	(1972)	(1992)	(2004)
Min	1,173	1,167	2,917	2,610	2,547	3,914	2,757	1,993	1,383	1,113	836	760
(WY)	(1940)	(1965)	(1940)	(1963)	(1963)	(1983)	(1995)	(1995)	(1995)	(1995)	(1934)	(1995)

04249000 OSWEGO RIVER AT LOCK 7, OSWEGO, NY—Continued

SUMMARY STATISTICS

	Calendar Year 2012		Water Year 2013		Water Years 1934 - 2013	
Annual total	1,831,406		2,518,151			
Annual mean	5,004		6,899		6,912	
Highest annual mean					11,030	1976
Lowest annual mean					3,433	1965
Highest daily mean	17,300	Jan 28	18,900	Jun 14	37,000	Mar 28, 1936
Lowest daily mean	294	Jul 22	593	Aug 7	261	Sep 18, 1985
Annual seven-day minimum	809	Jul 18	1,200	Oct 1	697	Sep 4, 1995
10 percent exceeds	11,600		12,800		14,700	
50 percent exceeds	3,530		5,930		5,390	
90 percent exceeds	970		2,040		1,590	



04249000 OSWEGO RIVER AT LOCK 7, OSWEGO, NY—Continued

WATER-QUALITY RECORDS

PERIOD OF RECORD.--March 2011 to current year.

CHEMICAL DATA: Water years 2011 (c), 2012-13 (e).

NUTRIENT DATA: Water years 2011 (c), 2012-13 (e).

BIOLOGICAL DATA: Water years 2011 (b).

INORGANIC DATA: Water years 2011 (c), 2012 (e), 2013 (d).

ORGANIC DATA: Water years 2011 (c), 2012 (d), 2013 (b).

SEDIMENT DATA: Water years 2011 (c), 2012 (e), 2013 (c).

PERIOD OF DAILY RECORD.--

WATER TEMPERATURE: December 2010 to current year.

SPECIFIC CONDUCTANCE: December 2010 to current year.

pH: December 2010 to current year.

DISSOLVED OXYGEN: December 2010 to current year.

TURBIDITY: December 2010 to current year.

INSTRUMENTATION.--ISCO refrigerated automatic sampler since July 2010. A YSI 6920-V2 continuous monitor with water temperature, specific conductance, pH, dissolved oxygen and turbidity since December 2010 provides 15-minute-interval readings.

REMARKS.--YSI 6920-V2 turbidity record is subject to low end adjustments when values are below zero and 0.0 FNU may have occurred on days of missing record or instrument malfunction.

COOPERATION.--In cooperation with the U.S. Environmental Protection Agency's Great Lakes Restoration Initiative (GLRI).

EXTREMES FOR PERIOD OF DAILY RECORD.--

WATER TEMPERATURE: Maximum, 29.5°C, July 17, 2012; minimum, -0.1°C, on several days during winter period.

SPECIFIC CONDUCTANCE: Maximum, 1,080 $\mu\text{S}/\text{cm}$ @ 25°C, Feb. 20, 2011; minimum, 388 $\mu\text{S}/\text{cm}$ @ 25°C, May 2, 2011.

pH: Maximum, 9.2, on several days; minimum, 7.3, Jun. 28, 2012.

DISSOLVED OXYGEN: Maximum, 15.9 mg/L, Feb. 26, 28, Apr. 17, 2012; minimum, 3.3 mg/L, Aug. 6, 2012.

TURBIDITY: Maximum, 62 FNU, Sept. 7, 2011; minimum, 0.0 FNU, Sept. 14, 2012 [0.0 FNU may have occurred on days of missing record or instrument malfunction].

EXTREMES FOR CURRENT YEAR.--

WATER TEMPERATURE: Maximum, 29.4°C, July 23; minimum, -0.1°C, on several days.

SPECIFIC CONDUCTANCE: Maximum, 1,080 $\mu\text{S}/\text{cm}$ @ 25°C, Oct. 12, Apr. 4; minimum, 403 $\mu\text{S}/\text{cm}$ @ 25°C, Oct. 20.

pH: Maximum, 8.8 standard units, Aug. 20, Sept. 30; minimum, 7.4 standard units, Oct. 9.

DISSOLVED OXYGEN: Maximum, 15.9 mg/L, Mar. 26, 27; minimum, 5.2 mg/L, July 23.

TURBIDITY: Maximum, 33 FNU, July 8; minimum, 0.1 FNU, Feb. 24, Aug. 7, 8.

04249000 OSWEGO RIVER AT LOCK 7, OSWEGO, NY—Continued

TEMPERATURE, WATER, DEGREES CELSIUS
WATER YEAR OCTOBER 2012 TO SEPTEMBER 2013

Day	Max	Min	Mean	Max	Min	Mean	Max	Min	Mean	Max	Min	Mean
	October			November			December			January		
1	18.7	17.0	17.5	12.3	11.7	12.1	4.0	3.5	3.7	0.7	0.3	0.5
2	17.9	17.2	17.5	11.7	10.9	11.3	4.3	3.8	4.0	0.3	0.0	0.2
3	18.0	17.5	17.7	10.9	10.2	10.6	4.4	4.1	4.2	0.0	-0.1	0.0
4	18.6	17.6	17.9	10.2	9.5	9.9	5.5	4.2	4.8	0.1	0.0	0.1
5	18.8	17.4	17.8	9.8	9.0	9.4	5.1	4.2	4.7	0.3	0.1	0.2
6	18.5	16.1	17.1	9.5	8.8	9.1	4.5	4.2	4.3	0.5	0.3	0.4
7	17.1	16.1	16.5	9.2	8.1	8.6	4.3	4.1	4.2	0.6	0.4	0.5
8	17.3	15.8	16.5	8.8	7.7	8.1	4.1	4.0	4.1	0.6	0.3	0.5
9	17.0	15.4	15.9	7.9	7.6	7.7	4.1	3.9	4.0	0.7	0.4	0.5
10	15.8	14.6	15.2	8.3	7.5	7.7	4.5	4.1	4.3	1.0	0.7	0.8
11	15.2	14.1	14.5	9.0	7.7	8.1	4.4	4.1	4.3	1.1	0.8	0.9
12	14.7	13.4	13.9	9.0	8.1	8.6	4.3	4.1	4.2	1.5	1.1	1.3
13	14.2	12.9	13.4	8.5	8.0	8.2	4.4	4.1	4.2	2.2	1.5	1.8
14	14.4	13.0	13.5	8.4	7.6	8.0	4.1	3.9	4.0	2.3	2.1	2.2
15	13.9	13.0	13.5	8.5	7.3	7.6	4.2	3.9	4.0	2.2	2.1	2.1
16	13.1	12.5	12.8	8.3	7.2	7.6	4.0	3.9	4.0	2.1	2.0	2.0
17	13.5	12.1	12.7	8.1	7.2	7.5	4.1	3.9	4.0	2.0	1.6	1.8
18	13.9	12.4	12.9	8.1	6.9	7.3	4.1	4.0	4.1	1.6	1.3	1.4
19	13.6	12.8	13.0	7.8	6.6	6.9	4.2	4.0	4.1	1.5	1.3	1.4
20	13.5	12.7	13.0	7.4	6.5	6.8	4.1	3.9	4.0	1.6	1.1	1.4
21	13.4	12.7	12.9	7.3	6.4	6.7	3.9	3.5	3.8	1.1	0.5	0.7
22	13.7	12.6	13.0	7.4	6.0	6.5	3.5	2.7	3.0	0.6	-0.1	0.2
23	13.0	12.7	12.8	6.7	6.1	6.3	2.7	2.3	2.5	0.0	-0.1	-0.1
24	13.2	12.7	12.8	6.1	5.2	5.8	2.4	2.2	2.3	0.0	-0.1	-0.1
25	14.6	12.6	13.3	5.3	4.7	5.0	2.3	2.1	2.2	0.0	-0.1	-0.1
26	14.4	13.0	13.6	5.0	4.5	4.8	2.1	1.3	1.8	0.0	-0.1	-0.1
27	14.2	13.6	13.9	4.7	4.1	4.6	1.4	0.6	0.9	0.1	-0.1	0.0
28	13.7	13.1	13.4	5.0	4.3	4.7	0.7	0.6	0.6	0.0	-0.1	-0.1
29	13.1	12.9	13.0	4.6	4.1	4.3	0.8	0.6	0.7	0.2	0.0	0.1
30	13.1	12.8	13.0	4.1	3.6	3.9	0.6	0.3	0.4	0.4	0.1	0.2
31	12.8	12.2	12.6	---	---	---	0.6	0.3	0.4	0.2	0.0	0.1
Month	18.8	12.1	14.4	12.3	3.6	7.5	5.5	0.3	3.3	2.3	-0.1	0.7

04249000 OSWEGO RIVER AT LOCK 7, OSWEGO, NY—Continued

TEMPERATURE, WATER, DEGREES CELSIUS
WATER YEAR OCTOBER 2012 TO SEPTEMBER 2013

Day	Max	Min	Mean	Max	Min	Mean	Max	Min	Mean	Max	Min	Mean
	February			March			April			May		
1	0.1	-0.1	0.0	1.6	1.4	1.5	6.8	5.4	5.8	14.5	12.2	13.2
2	0.0	-0.1	0.0	1.4	1.2	1.3	6.0	4.5	5.2	15.0	13.0	13.9
3	0.0	-0.1	0.0	1.2	1.0	1.1	5.5	4.2	4.7	16.4	14.1	15.1
4	0.0	0.0	0.0	1.1	0.8	0.9	5.5	4.2	4.9	16.7	14.8	15.6
5	0.1	-0.1	0.0	1.5	0.7	1.0	5.6	4.6	5.2	17.7	15.7	16.5
6	0.1	-0.1	0.0	1.4	0.9	1.2	5.2	4.3	4.7	18.3	16.2	17.1
7	0.2	0.0	0.0	1.9	1.3	1.5	5.7	4.8	5.1	18.8	16.9	17.7
8	0.0	0.0	0.0	2.5	1.5	1.9	6.1	5.0	5.5	18.8	17.5	18.1
9	0.1	-0.1	0.0	3.1	1.8	2.3	7.0	5.9	6.4	19.4	17.7	18.3
10	0.1	0.0	0.0	3.1	2.2	2.7	6.9	6.6	6.7	19.2	17.9	18.5
11	0.2	0.0	0.1	3.4	3.0	3.2	6.8	6.5	6.7	18.4	17.8	18.1
12	0.1	0.0	0.0	3.4	3.0	3.2	6.6	6.2	6.4	18.1	16.4	17.3
13	0.5	0.1	0.2	3.0	2.7	2.9	6.3	6.0	6.1	16.9	16.0	16.3
14	0.9	0.4	0.7	2.7	1.9	2.3	6.9	6.0	6.5	16.9	15.6	16.1
15	1.4	0.9	1.1	2.0	1.7	1.8	7.4	6.4	6.9	16.9	15.4	15.8
16	1.4	1.0	1.2	2.0	1.6	1.7	8.0	7.4	7.7	16.9	15.2	15.9
17	1.1	0.2	0.7	2.1	1.4	1.7	8.7	7.8	8.2	17.3	15.6	16.3
18	0.5	-0.1	0.2	1.9	1.4	1.7	9.9	8.4	9.0	17.6	15.9	16.6
19	0.4	0.2	0.3	1.7	1.3	1.5	10.4	9.9	10.2	17.6	16.4	16.9
20	0.2	0.0	0.1	2.2	1.3	1.7	10.4	9.7	10.1	18.8	16.8	17.6
21	0.0	-0.1	0.0	2.4	1.5	1.9	9.7	9.1	9.5	19.4	17.7	18.4
22	0.2	0.0	0.1	2.4	1.6	1.9	9.8	9.1	9.5	20.5	18.5	19.4
23	0.4	0.1	0.2	3.0	1.9	2.3	10.4	9.5	9.9	19.9	19.2	19.5
24	0.7	0.3	0.6	3.4	2.4	2.8	10.5	10.2	10.3	19.2	17.9	18.6
25	1.2	0.7	0.9	3.7	2.9	3.1	10.8	10.1	10.5	17.9	17.4	17.7
26	1.8	0.7	1.2	5.2	2.9	3.6	11.3	10.7	11.0	17.4	15.9	16.9
27	1.5	0.9	1.3	5.1	3.3	4.0	11.3	10.6	11.0	17.8	16.0	16.7
28	1.6	1.2	1.4	5.7	4.0	4.6	11.8	10.8	11.3	16.9	16.4	16.6
29	---	---	---	5.7	4.6	5.0	12.0	11.5	11.7	17.5	16.4	17.0
30	---	---	---	6.6	4.7	5.4	13.2	11.6	12.3	18.1	17.0	17.6
31	---	---	---	6.2	5.2	5.7	---	---	---	19.3	18.1	18.7
Month	1.8	-0.1	0.4	6.6	0.7	2.5	13.2	4.2	8.0	20.5	12.2	17.0

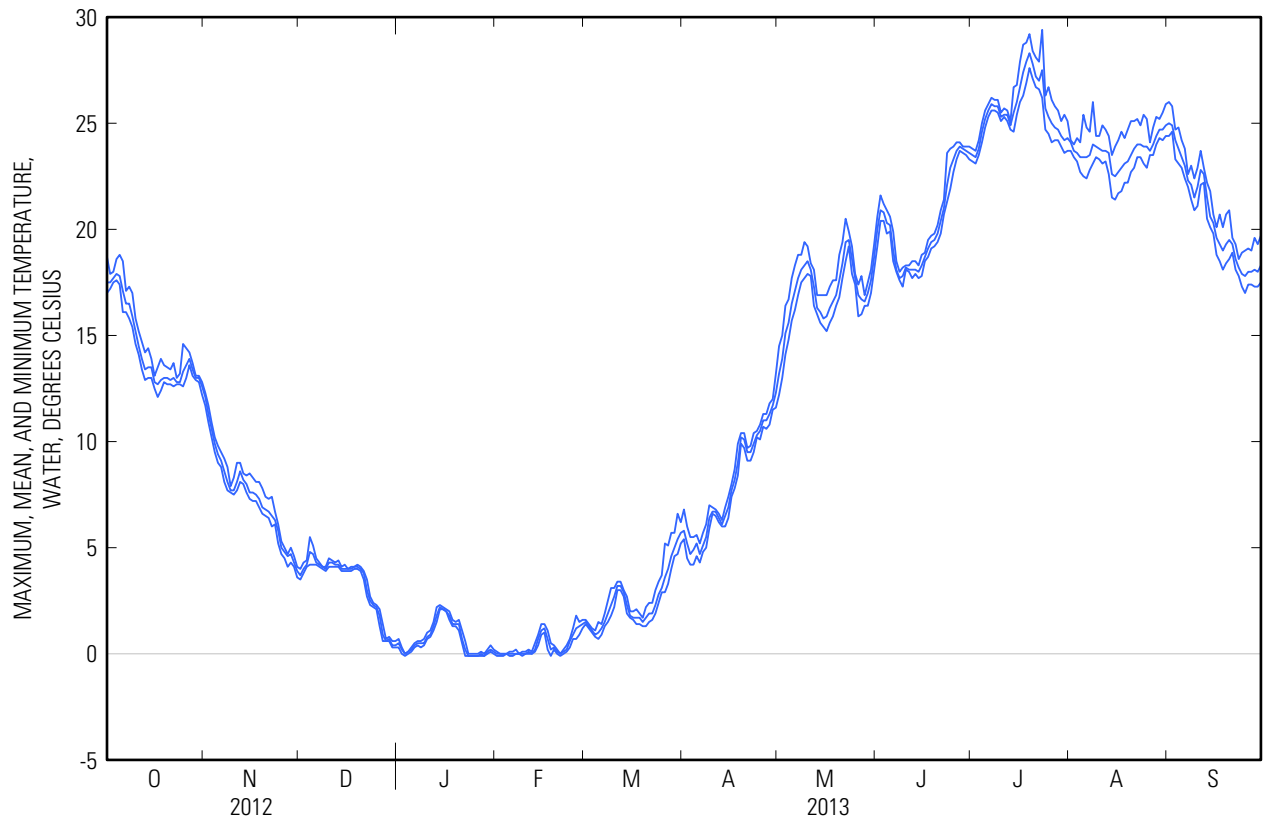
04249000 OSWEGO RIVER AT LOCK 7, OSWEGO, NY—Continued

TEMPERATURE, WATER, DEGREES CELSIUS
WATER YEAR OCTOBER 2012 TO SEPTEMBER 2013

Day	Max	Min	Mean	Max	Min	Mean	Max	Min	Mean	Max	Min	Mean
	June			July			August			September		
1	20.6	19.2	20.0	23.8	23.2	23.5	24.2	23.7	24.1	26.0	24.4	25.0
2	21.6	20.4	20.9	23.7	23.1	23.4	24.0	23.4	23.7	25.8	24.6	24.9
3	21.2	20.4	20.8	24.2	23.5	23.8	24.3	23.2	23.6	24.7	23.3	24.2
4	20.9	19.8	20.3	25.0	24.1	24.6	24.1	22.7	23.4	24.8	23.1	23.8
5	20.6	19.9	20.2	25.6	24.8	25.2	25.4	22.5	23.4	24.2	22.9	23.4
6	19.9	18.5	19.0	25.9	25.3	25.6	24.8	22.4	23.4	23.8	22.4	23.0
7	18.5	18.0	18.1	26.2	25.6	25.9	24.6	22.8	23.5	22.6	22.0	22.3
8	18.0	17.6	17.7	26.1	25.6	25.8	26.0	23.1	24.0	23.0	21.4	22.1
9	18.2	17.3	17.8	26.1	25.5	25.8	24.4	23.4	23.9	22.4	20.9	21.5
10	18.3	18.1	18.2	25.5	25.1	25.3	24.4	23.3	23.8	22.9	21.1	22.0
11	18.3	18.0	18.1	25.7	25.3	25.4	24.9	23.1	23.7	23.7	22.1	22.8
12	18.5	17.7	18.1	25.6	25.1	25.4	24.7	23.2	23.7	22.9	22.2	22.6
13	18.5	17.9	18.1	25.1	24.7	24.9	24.4	22.6	23.6	22.2	20.5	21.5
14	18.3	17.7	18.0	26.7	24.6	25.5	23.5	21.5	22.6	21.8	20.1	20.6
15	18.8	17.8	18.3	26.8	25.4	26.0	23.9	21.4	22.5	20.7	19.8	20.3
16	18.9	18.5	18.7	27.9	26.0	26.7	24.2	21.7	22.7	20.1	18.8	19.6
17	19.5	18.7	19.1	28.7	26.3	27.4	24.6	21.8	22.9	20.7	18.5	19.3
18	19.7	19.1	19.4	28.8	26.9	27.9	24.3	22.2	23.1	20.1	18.1	19.0
19	19.8	19.2	19.5	29.2	27.6	28.3	24.7	22.2	23.2	20.7	18.4	19.3
20	20.2	19.4	19.8	28.4	27.1	27.8	25.1	22.7	23.5	20.9	18.6	19.5
21	20.9	19.8	20.4	28.1	26.7	27.2	25.1	22.9	23.8	19.6	18.9	19.3
22	21.4	20.7	21.0	27.9	26.6	27.0	25.2	23.4	24.0	19.3	18.1	18.6
23	23.6	21.3	22.1	29.4	26.2	27.5	24.9	23.4	24.0	18.6	17.8	18.2
24	23.8	21.9	22.9	26.3	24.7	25.7	25.4	23.1	23.9	18.9	17.3	17.9
25	23.9	22.7	23.3	26.7	24.5	25.3	25.2	22.9	23.9	19.0	17.0	17.8
26	24.1	23.3	23.7	26.1	24.1	25.0	24.1	23.5	23.7	19.1	17.4	18.0
27	24.1	23.7	23.9	25.8	24.2	24.8	24.8	23.5	24.0	19.0	17.4	18.0
28	23.9	23.6	23.8	25.6	24.2	24.7	25.3	24.0	24.4	19.6	17.3	18.1
29	23.9	23.5	23.7	25.1	23.9	24.4	25.2	24.3	24.7	19.3	17.3	18.0
30	23.9	23.3	23.6	25.4	23.6	24.2	25.5	24.2	24.7	19.7	17.5	18.3
31	---	---	---	25.1	23.7	24.3	25.9	24.4	24.9	---	---	---
Month	24.1	17.3	20.3	29.4	23.1	25.6	26.0	21.4	23.7	26.0	17.0	20.6

	Max	Min	Mean
Year	29.4	-0.1	12.1

04249000 OSWEGO RIVER AT LOCK 7, OSWEGO, NY—Continued



04249000 OSWEGO RIVER AT LOCK 7, OSWEGO, NY—Continued

SPECIFIC CONDUCTANCE, WATER, UNFILTERED, MICROSIEMENS PER CENTIMETER AT 25 DEGREES CELSIUS
WATER YEAR OCTOBER 2012 TO SEPTEMBER 2013

Day	Max	Min	Mean	Max	Min	Mean	Max	Min	Mean	Max	Min	Mean
	October			November			December			January		
1	1,000	979	984	720	648	665	674	654	662	576	523	544
2	996	979	984	821	720	788	697	674	687	647	558	621
3	1,010	994	1,010	856	818	830	697	672	691	647	545	572
4	1,010	957	987	941	856	903	717	652	666	722	647	698
5	993	987	991	966	940	953	733	474	619	654	586	607
6	987	952	962	975	879	950	787	521	693	586	558	565
7	978	955	970	879	812	844	624	584	600	565	549	554
8	1,020	782	958	816	656	717	596	542	579	600	565	581
9	1,030	1,020	1,020	707	640	672	583	536	562	639	600	627
10	1,030	962	1,010	737	686	713	618	536	577	646	639	643
11	1,040	891	949	727	649	686	625	538	589	645	615	634
12	1,080	854	1,020	720	653	691	646	530	577	615	593	599
13	854	678	730	678	640	653	672	646	660	632	592	610
14	795	729	767	794	678	733	660	578	619	670	631	654
15	792	676	729	794	753	774	585	562	571	829	628	738
16	679	520	591	826	763	788	606	585	595	810	747	776
17	728	521	619	847	822	837	606	542	564	747	651	680
18	745	714	736	825	758	787	553	532	540	661	625	649
19	714	432	607	758	734	745	601	553	577	657	632	646
20	509	403	444	781	741	756	676	591	632	665	620	654
21	548	509	531	789	739	771	692	592	651	629	592	615
22	545	522	532	739	707	718	667	560	586	608	585	602
23	564	543	553	912	712	803	698	655	680	620	586	601
24	567	498	533	934	791	891	656	611	635	635	597	619
25	503	476	487	791	709	734	619	585	606	717	615	688
26	607	477	520	821	724	783	597	580	585	706	541	606
27	746	607	681	821	751	794	616	597	610	639	549	570
28	1,010	710	868	760	634	715	629	609	618	769	639	705
29	1,020	852	968	712	636	684	621	613	618	674	592	648
30	854	765	810	694	642	655	617	586	595	614	572	585
31	765	657	714	---	---	---	590	574	584	625	569	597
Month	1,080	403	783	975	634	768	787	474	614	829	523	629

04249000 OSWEGO RIVER AT LOCK 7, OSWEGO, NY—Continued

SPECIFIC CONDUCTANCE, WATER, UNFILTERED, MICROSIEMENS PER CENTIMETER AT 25 DEGREES CELSIUS
WATER YEAR OCTOBER 2012 TO SEPTEMBER 2013

Day	Max	Min	Mean	Max	Min	Mean	Max	Min	Mean	Max	Min	Mean
	February			March			April			May		
1	740	557	657	746	643	706	909	884	896	592	551	571
2	766	659	746	765	744	749	923	886	899	627	536	557
3	686	637	665	774	727	750	934	872	909	817	627	737
4	688	636	678	727	698	713	1,080	882	974	839	814	828
5	693	578	648	732	698	712	983	587	670	867	825	836
6	649	480	603	756	732	743	596	568	581	885	819	851
7	632	480	558	741	654	710	655	591	630	874	810	834
8	616	607	610	697	646	658	664	634	648	961	835	886
9	612	498	594	742	697	730	635	558	594	915	825	856
10	599	483	537	733	691	720	572	555	563	825	694	738
11	624	578	597	691	655	666	624	488	536	772	733	749
12	632	624	630	655	620	634	906	624	768	794	733	772
13	645	631	639	754	602	646	764	638	687	773	728	749
14	647	615	641	772	750	764	768	708	751	822	773	796
15	615	573	582	793	772	782	710	665	680	794	750	766
16	649	586	603	804	753	790	670	648	657	781	748	760
17	693	649	681	753	641	666	658	641	648	779	752	767
18	663	615	626	703	649	670	661	648	656	781	736	762
19	636	618	624	705	669	698	648	626	633	803	680	764
20	672	636	647	669	615	638	664	635	650	862	795	828
21	761	672	722	616	589	599	667	627	647	866	837	860
22	759	663	705	629	589	604	636	618	624	851	814	826
23	712	676	685	686	629	660	623	612	617	845	662	784
24	682	599	634	693	686	690	612	563	591	668	623	638
25	599	567	578	698	691	695	571	551	563	656	627	640
26	665	584	626	700	688	696	601	555	582	655	622	633
27	702	662	690	697	684	693	608	584	595	628	606	613
28	693	626	648	905	651	758	621	581	606	728	605	661
29	---	---	---	910	888	899	606	589	599	771	622	724
30	---	---	---	894	834	856	609	590	597	639	540	584
31	---	---	---	896	858	877	---	---	---	729	639	690
Month	766	480	638	910	589	715	1,080	488	668	961	536	744

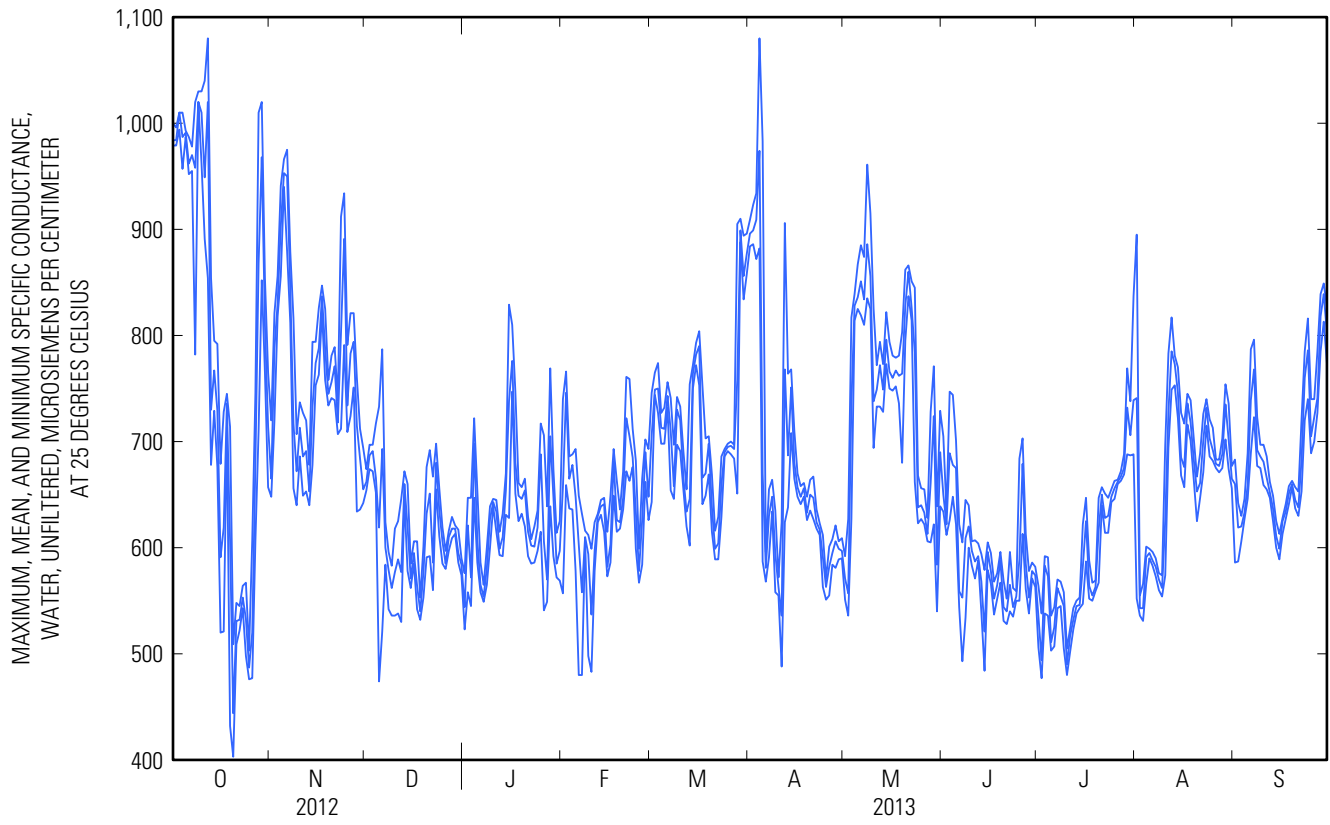
04249000 OSWEGO RIVER AT LOCK 7, OSWEGO, NY—Continued

SPECIFIC CONDUCTANCE, WATER, UNFILTERED, MICROSIEMENS PER CENTIMETER AT 25 DEGREES CELSIUS
WATER YEAR OCTOBER 2012 TO SEPTEMBER 2013

Day	Max	Min	Mean	Max	Min	Mean	Max	Min	Mean	Max	Min	Mean
	June			July			August			September		
1	705	634	650	564	506	535	895	552	741	683	586	660
2	634	612	622	538	477	494	555	536	543	642	587	619
3	747	626	689	592	538	583	566	531	543	630	606	620
4	744	648	678	591	536	573	601	566	591	646	627	633
5	701	622	675	536	503	511	599	590	595	689	646	659
6	622	544	559	544	507	525	596	583	588	787	689	739
7	605	493	553	570	543	562	590	573	582	796	723	768
8	645	534	609	568	545	554	576	560	570	723	677	692
9	640	600	620	558	505	545	574	554	562	697	675	686
10	606	583	597	505	480	490	697	574	626	697	659	681
11	607	571	587	524	502	517	783	694	728	686	655	666
12	604	588	592	543	523	532	817	749	785	662	647	652
13	594	539	568	550	538	545	781	753	773	649	625	637
14	579	484	521	553	543	546	770	722	746	625	600	611
15	605	579	596	622	547	582	727	668	685	613	589	599
16	595	566	578	647	587	625	717	657	676	628	613	625
17	568	537	552	588	552	564	745	716	736	641	627	634
18	576	552	565	567	550	555	739	701	718	658	641	651
19	596	567	588	569	559	563	703	664	683	663	657	660
20	569	531	544	647	567	617	667	625	653	657	637	645
21	552	528	540	657	640	650	689	647	661	653	630	638
22	596	540	565	651	614	628	726	671	701	721	653	683
23	562	535	544	647	614	630	740	715	732	785	720	760
24	559	550	554	655	643	648	721	686	703	816	740	786
25	684	550	589	663	646	656	713	682	692	740	689	705
26	703	613	679	664	660	662	683	675	679	740	700	723
27	613	561	585	672	663	667	683	671	677	785	727	741
28	578	538	553	688	669	675	703	675	688	839	785	818
29	586	571	578	769	688	732	754	702	735	849	813	839
30	582	563	574	738	687	706	736	674	702	827	774	802
31	---	---	---	837	688	739	677	656	665	---	---	---
Month	747	484	590	837	477	594	895	531	670	849	586	688

	Max	Min	Mean
Year	1,080	403	675

04249000 OSWEGO RIVER AT LOCK 7, OSWEGO, NY—Continued



04249000 OSWEGO RIVER AT LOCK 7, OSWEGO, NY—Continued

pH, WATER, UNFILTERED, FIELD, STANDARD UNITS
WATER YEAR OCTOBER 2012 TO SEPTEMBER 2013

Day	Max	Min	Median	Max	Min	Median	Max	Min	Median	Max	Min	Median
	October			November			December			January		
1	8.2	7.6	7.7	8.1	7.8	7.9	8.4	8.1	8.2	8.1	7.9	8.0
2	8.1	7.7	7.8	8.1	7.8	7.8	8.3	8.1	8.2	8.1	7.8	7.9
3	8.0	7.6	7.8	8.1	7.8	7.8	8.4	8.2	8.3	8.0	7.9	7.9
4	8.1	7.6	7.7	8.3	7.9	8.0	8.5	8.2	8.3	7.9	7.7	7.9
5	8.2	7.5	7.6	8.3	8.0	8.0	8.4	8.1	8.3	8.0	7.6	7.8
6	8.2	7.5	7.6	8.3	8.0	8.2	8.3	8.1	8.2	8.1	7.9	8.0
7	8.0	7.5	7.7	8.3	7.9	8.2	8.4	8.2	8.3	8.0	7.9	8.0
8	8.0	7.6	7.7	8.3	7.9	8.1	8.3	8.2	8.2	8.0	7.9	8.0
9	8.0	7.4	7.6	8.4	8.1	8.2	8.3	8.2	8.2	8.2	7.9	7.9
10	8.0	7.5	7.6	8.4	8.1	8.2	8.3	8.2	8.2	8.0	7.9	7.9
11	8.0	7.6	7.7	8.5	8.1	8.1	8.2	7.9	8.2	8.1	7.9	8.0
12	8.0	7.6	7.7	8.4	8.1	8.3	8.3	8.1	8.2	8.0	7.9	8.0
13	8.1	7.6	7.6	8.4	8.2	8.3	8.2	8.2	8.2	8.0	7.9	8.0
14	8.1	7.6	7.7	8.6	8.2	8.3	8.3	8.2	8.2	8.0	8.0	8.0
15	8.0	7.7	7.8	8.3	8.0	8.2	8.2	7.8	8.2	8.2	7.9	8.0
16	8.0	7.7	7.8	8.3	7.9	8.0	8.2	8.0	8.1	8.0	8.0	8.0
17	8.0	7.6	7.7	8.3	7.9	8.0	8.1	8.0	8.1	8.1	7.9	8.0
18	8.1	7.7	7.8	8.1	7.5	7.9	8.2	8.1	8.2	8.2	7.9	8.0
19	8.1	7.7	7.8	8.1	7.6	7.8	8.5	8.1	8.2	8.7	8.0	8.2
20	8.1	7.7	7.7	8.1	7.8	7.8	8.3	8.1	8.2	8.7	8.3	8.5
21	8.1	7.7	7.8	8.1	7.6	7.8	8.4	8.2	8.2	8.6	8.3	8.4
22	8.1	7.5	7.8	8.2	7.9	8.0	8.4	8.2	8.3	8.4	8.2	8.3
23	7.9	7.6	7.8	8.3	8.1	8.1	8.5	8.2	8.3	8.4	8.1	8.3
24	8.0	7.6	7.7	8.4	8.1	8.2	8.5	8.2	8.3	8.5	8.3	8.4
25	8.2	7.6	7.7	8.4	8.1	8.2	8.5	8.2	8.3	8.7	8.3	8.4
26	8.1	7.7	7.8	8.5	8.2	8.2	8.3	8.0	8.1	8.6	8.4	8.5
27	8.1	7.7	7.9	8.4	8.1	8.2	8.3	8.1	8.2	8.5	8.1	8.3
28	8.0	7.9	7.9	8.5	8.2	8.3	8.3	8.1	8.1	8.3	8.1	8.2
29	8.1	7.9	8.0	8.5	8.2	8.3	8.2	8.0	8.1	8.2	8.1	8.1
30	8.2	7.9	8.0	8.3	8.1	8.2	8.2	8.0	8.1	8.1	8.0	8.0
31	8.0	7.8	7.9	---	---	---	8.2	8.0	8.0	8.0	7.8	7.9
Max	8.2	7.9	8.0	8.6	8.2	8.3	8.5	8.2	8.3	8.7	8.4	8.5
Min	7.9	7.4	7.6	8.1	7.5	7.8	8.1	7.8	8.0	7.9	7.6	7.8

04249000 OSWEGO RIVER AT LOCK 7, OSWEGO, NY—Continued

pH, WATER, UNFILTERED, FIELD, STANDARD UNITS
WATER YEAR OCTOBER 2012 TO SEPTEMBER 2013

Day	Max	Min	Median	Max	Min	Median	Max	Min	Median	Max	Min	Median
	February			March			April			May		
1	7.8	7.7	7.8	8.0	7.9	8.0	8.6	8.1	8.1	8.5	8.0	8.1
2	7.9	7.8	7.8	8.0	7.9	7.9	8.6	8.1	8.2	8.5	8.0	8.1
3	7.9	7.8	7.9	8.1	7.9	7.9	8.6	8.1	8.2	8.6	7.9	8.1
4	7.9	7.8	7.9	8.0	7.9	7.9	8.5	8.2	8.2	8.6	7.9	8.1
5	7.9	7.6	7.8	8.2	7.9	7.9	8.3	8.1	8.2	8.7	8.0	8.1
6	7.9	7.7	7.9	8.2	7.9	8.0	8.5	8.2	8.2	8.7	7.9	8.1
7	7.9	7.9	7.9	8.3	8.0	8.0	8.5	8.1	8.2	8.6	7.9	8.1
8	7.9	7.7	7.8	8.4	8.0	8.0	8.5	8.1	8.2	8.6	7.9	8.1
9	8.0	7.7	7.9	8.5	8.0	8.0	8.5	8.1	8.1	8.6	8.0	8.1
10	8.1	7.7	7.8	8.4	8.0	8.0	8.4	8.1	8.1	8.5	7.9	8.1
11	7.9	7.8	7.9	8.3	8.0	8.1	8.1	8.1	8.1	8.3	8.0	8.1
12	7.9	7.9	7.9	8.1	8.0	8.0	8.1	8.1	8.1	8.3	8.0	8.1
13	8.0	7.9	8.0	8.1	8.0	8.0	8.1	8.1	8.1	8.3	8.1	8.1
14	8.0	7.9	8.0	8.2	8.0	8.1	8.1	8.1	8.1	8.3	8.0	8.1
15	8.1	7.9	8.0	8.2	8.1	8.1	8.1	8.1	8.1	8.3	8.0	8.1
16	8.1	7.9	8.0	8.2	8.1	8.1	8.1	8.1	8.1	8.3	8.0	8.1
17	8.1	8.0	8.0	8.3	8.1	8.1	8.1	8.1	8.1	8.3	8.0	8.1
18	8.1	8.0	8.0	8.3	8.1	8.1	8.1	8.1	8.1	8.3	8.0	8.1
19	8.1	8.0	8.0	8.3	8.1	8.1	8.1	8.1	8.1	8.3	8.0	8.1
20	8.1	8.0	8.0	8.4	8.0	8.1	8.1	8.1	8.1	8.3	8.0	8.1
21	8.2	8.0	8.0	8.5	8.1	8.1	8.2	8.1	8.1	8.2	8.0	8.1
22	8.2	8.0	8.0	8.5	8.1	8.1	8.2	8.1	8.2	8.2	8.0	8.1
23	8.2	8.0	8.0	8.5	8.1	8.1	8.2	8.1	8.2	8.1	8.0	8.1
24	8.1	7.9	8.0	8.5	8.1	8.2	8.2	8.1	8.2	8.1	8.0	8.1
25	8.2	7.9	8.0	8.6	8.0	8.1	8.2	8.1	8.2	8.2	8.1	8.1
26	8.3	7.9	8.0	8.7	8.0	8.1	8.2	8.1	8.2	8.2	8.0	8.1
27	8.2	8.0	8.0	8.7	8.0	8.2	8.3	8.1	8.2	8.3	7.9	8.1
28	8.1	8.0	8.0	8.6	8.0	8.2	8.3	8.1	8.2	8.3	8.0	8.1
29	---	---	---	8.6	8.1	8.2	8.3	8.0	8.1	8.2	8.0	8.1
30	---	---	---	8.7	8.1	8.2	8.5	8.0	8.1	8.1	8.0	8.1
31	---	---	---	8.5	8.1	8.1	---	---	---	8.1	8.0	8.1
Max	8.3	8.0	8.0	8.7	8.1	8.2	8.6	8.2	8.2	8.7	8.1	8.1
Min	7.8	7.6	7.8	8.0	7.9	7.9	8.1	8.0	8.1	8.1	7.9	8.1

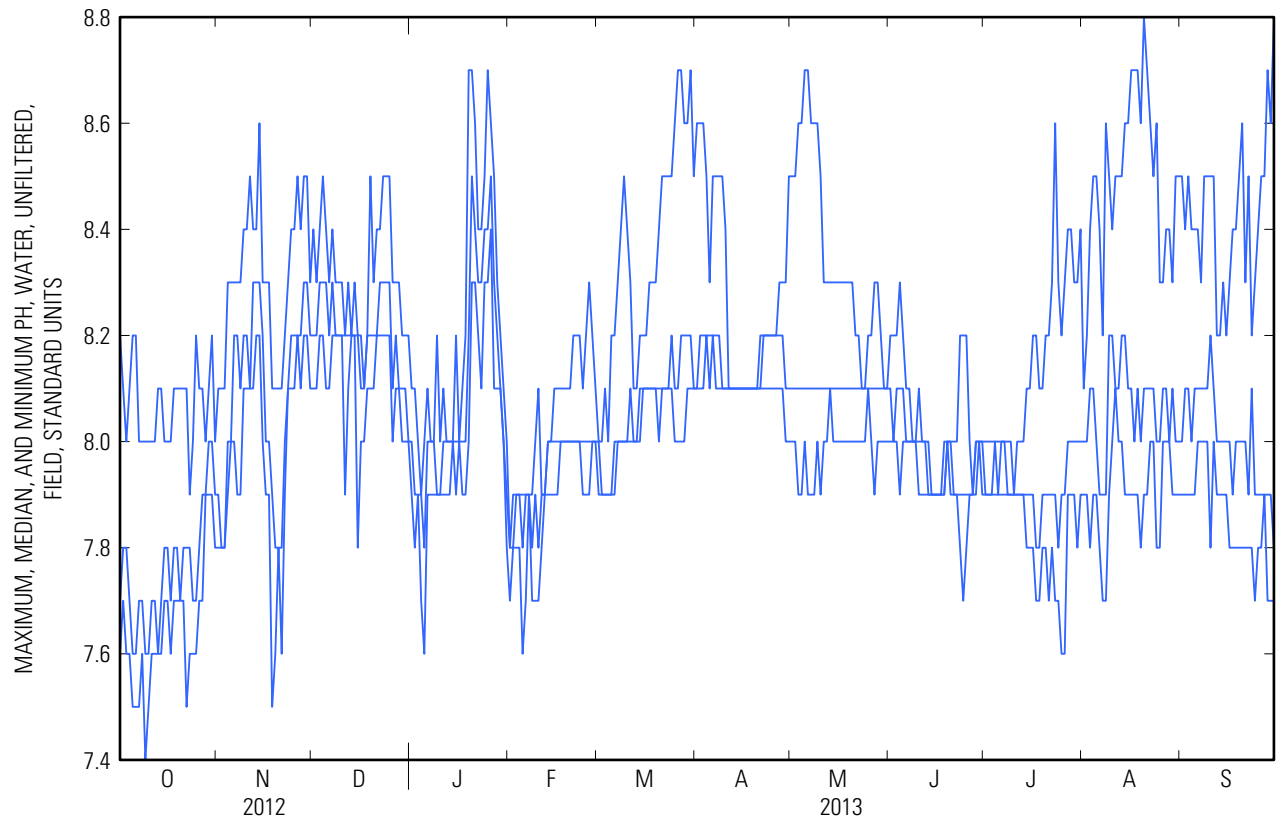
04249000 OSWEGO RIVER AT LOCK 7, OSWEGO, NY—Continued

pH, WATER, UNFILTERED, FIELD, STANDARD UNITS
WATER YEAR OCTOBER 2012 TO SEPTEMBER 2013

Day	Max	Min	Median	Max	Min	Median	Max	Min	Median	Max	Min	Median
	June			July			August			September		
1	8.2	8.0	8.1	8.0	7.9	7.9	8.1	7.9	8.0	8.5	7.9	8.0
2	8.2	8.0	8.0	8.0	7.9	7.9	8.2	7.9	8.0	8.4	7.9	8.1
3	8.2	8.0	8.1	8.0	7.9	7.9	8.4	7.8	8.1	8.5	7.9	8.1
4	8.3	7.9	8.1	8.0	7.9	8.0	8.5	7.9	8.1	8.4	7.9	8.0
5	8.2	8.0	8.1	8.0	7.9	7.9	8.5	7.9	8.0	8.4	7.9	8.1
6	8.1	8.0	8.0	8.0	7.9	8.0	8.4	7.8	7.9	8.4	8.0	8.1
7	8.1	8.0	8.0	8.0	7.9	8.0	8.2	7.7	7.9	8.3	8.0	8.1
8	8.0	8.0	8.0	8.0	7.9	7.9	8.6	7.7	7.9	8.5	8.0	8.1
9	8.0	8.0	8.0	8.0	7.9	7.9	8.5	7.9	8.2	8.5	8.0	8.1
10	8.1	7.9	8.0	7.9	7.9	7.9	8.4	8.0	8.2	8.5	7.8	8.2
11	8.0	7.9	8.0	8.0	7.9	7.9	8.5	8.1	8.1	8.5	8.0	8.1
12	8.0	7.9	8.0	8.0	7.9	7.9	8.5	8.0	8.1	8.2	7.9	8.0
13	8.0	7.9	7.9	8.0	7.9	7.9	8.5	8.0	8.2	8.2	7.9	8.0
14	7.9	7.9	7.9	8.1	7.8	7.9	8.6	7.9	8.2	8.3	7.9	8.0
15	7.9	7.9	7.9	8.1	7.8	7.9	8.6	7.9	8.1	8.2	7.9	8.0
16	7.9	7.9	7.9	8.2	7.8	7.9	8.7	7.9	8.1	8.3	7.8	8.0
17	7.9	7.9	7.9	8.2	7.7	7.8	8.7	7.9	8.0	8.4	7.8	7.9
18	8.0	7.9	7.9	8.1	7.7	7.8	8.7	7.9	8.1	8.4	7.8	8.0
19	8.0	8.0	8.0	8.1	7.8	7.9	8.6	7.8	8.0	8.5	7.8	8.0
20	8.0	7.9	8.0	8.2	7.8	7.9	8.8	7.9	8.1	8.6	7.8	8.0
21	8.0	7.9	7.9	8.2	7.7	7.9	8.7	7.9	8.1	8.3	7.8	8.0
22	8.0	7.9	7.9	8.3	7.8	7.9	8.6	8.0	8.1	8.5	7.8	7.9
23	8.2	7.8	7.9	8.6	7.7	7.9	8.5	8.0	8.1	8.2	7.8	8.1
24	8.2	7.7	7.9	8.3	7.7	7.8	8.6	7.8	8.0	8.3	7.7	7.9
25	8.2	7.8	7.9	8.2	7.6	7.9	8.3	7.8	8.0	8.4	7.8	7.9
26	8.0	7.9	7.9	8.3	7.6	7.9	8.3	8.0	8.1	8.5	7.8	7.9
27	7.9	7.9	7.9	8.4	7.9	8.0	8.4	8.0	8.1	8.5	7.9	7.9
28	8.0	7.9	8.0	8.4	7.9	8.0	8.4	8.0	8.0	8.7	7.7	7.9
29	8.0	8.0	8.0	8.3	7.9	8.0	8.3	7.9	8.1	8.6	7.7	7.9
30	8.0	7.9	8.0	8.3	7.8	8.0	8.5	7.9	8.0	8.8	7.7	7.8
31	---	---	---	8.4	7.9	8.0	8.5	7.9	8.0	---	---	---
Max	8.3	8.0	8.1	8.6	7.9	8.0	8.8	8.1	8.2	8.8	8.0	8.2
Min	7.9	7.7	7.9	7.9	7.6	7.8	8.1	7.7	7.9	8.2	7.7	7.8

	Max	Min	Median
Year	8.8	8.4	8.5
Year	7.8	7.4	7.6

04249000 OSWEGO RIVER AT LOCK 7, OSWEGO, NY—Continued



04249000 OSWEGO RIVER AT LOCK 7, OSWEGO, NY—Continued

DISSOLVED OXYGEN, WATER, UNFILTERED, MILLIGRAMS PER LITER
WATER YEAR OCTOBER 2012 TO SEPTEMBER 2013

Day	Max	Min	Mean	Max	Min	Mean	Max	Min	Mean	Max	Min	Mean
	October			November			December			January		
1	11.3	7.5	8.8	10.2	8.8	9.6	14.1	12.6	13.1	14.9	14.6	14.7
2	10.5	8.2	8.8	10.7	9.2	9.8	13.4	12.6	12.8	15.1	14.7	14.9
3	10.2	8.3	8.9	11.2	9.6	10.2	13.9	12.6	13.0	15.4	15.0	15.2
4	10.6	8.0	8.9	11.3	9.9	10.4	13.9	12.6	13.0	15.1	14.9	15.0
5	11.0	7.5	8.5	11.8	10.2	10.6	13.0	12.5	12.8	15.3	14.9	15.1
6	11.4	7.5	8.5	11.7	10.3	11.0	13.4	12.9	13.1	15.0	14.7	14.9
7	10.7	7.7	8.8	12.0	10.6	11.1	13.2	12.9	13.0	15.1	14.8	14.9
8	10.5	8.3	9.2	12.0	10.6	11.2	13.2	12.8	12.9	15.2	14.9	15.0
9	11.4	8.4	9.4	12.2	11.2	11.4	13.4	12.8	13.1	15.0	14.6	14.8
10	10.9	8.5	9.3	12.2	11.0	11.4	12.9	12.6	12.8	14.9	14.5	14.7
11	11.3	9.1	9.7	12.5	10.7	11.4	13.4	12.7	13.1	14.6	14.2	14.4
12	11.1	9.0	9.7	12.0	10.7	11.2	13.6	13.1	13.3	14.5	14.1	14.3
13	11.4	9.2	9.9	11.9	11.0	11.3	13.4	13.0	13.2	14.4	14.2	14.3
14	11.2	9.1	9.7	12.8	11.0	11.5	13.5	13.0	13.2	14.5	14.1	14.3
15	10.6	9.3	9.7	12.7	11.0	11.6	13.6	13.0	13.2	14.5	14.4	14.4
16	10.8	9.4	9.9	12.8	11.1	11.6	13.3	12.9	13.0	14.4	14.2	14.3
17	11.3	9.3	10.0	13.3	11.1	11.9	13.2	12.8	12.9	14.5	14.2	14.4
18	11.2	9.4	10	13.6	11.5	12.1	13.0	12.7	12.9	14.7	14.4	14.6
19	10.9	9.7	10.1	13.6	11.5	12.1	13.4	12.9	13.2	14.6	14.2	14.4
20	11.2	9.5	10.1	13.8	11.5	12.1	13.5	13.1	13.4	14.4	13.9	14.2
21	10.9	9.5	10.1	13.4	11.3	12.2	13.3	13.1	13.2	14.9	14.4	14.7
22	11.1	9.0	10.1	13.8	11.5	12.2	13.9	13.3	13.6	15.0	14.6	14.8
23	10.3	9.3	9.8	13.2	11.5	11.8	14.0	13.9	13.9	15.3	15.0	15.2
24	10.8	9.3	9.8	13.2	11.6	12.2	14.2	14.0	14.1	15.5	15.1	15.2
25	11.1	9.1	9.8	13.2	11.9	12.3	14.4	14.1	14.2	15.2	14.9	15.0
26	10.5	8.9	9.7	14.1	12.1	12.6	14.5	14.3	14.4	15.1	14.3	14.8
27	10.4	8.9	9.5	13.9	12.1	12.7	14.7	14.3	14.5	15.2	14.4	14.7
28	10.0	9.1	9.6	14.0	12.5	12.9	14.9	14.6	14.7	14.9	14.2	14.6
29	10.1	8.9	9.6	14.2	12.5	13.1	14.7	14.5	14.6	14.9	14.2	14.4
30	10.3	9.2	9.9	13.7	12.5	13.0	15.0	14.6	14.8	14.6	14.1	14.2
31	10.3	9.2	9.7	---	---	---	15.0	14.6	14.8	14.9	14.1	14.7
Month	11.4	7.5	9.5	14.2	8.8	11.6	15.0	12.5	13.5	15.5	13.9	14.7

04249000 OSWEGO RIVER AT LOCK 7, OSWEGO, NY—Continued

DISSOLVED OXYGEN, WATER, UNFILTERED, MILLIGRAMS PER LITER
WATER YEAR OCTOBER 2012 TO SEPTEMBER 2013

Day	Max	Min	Mean	Max	Min	Mean	Max	Min	Mean	Max	Min	Mean
	February			March			April			May		
1	15.1	14.9	15.0	13.7	13.1	13.3	14.9	11.5	12.6	12.4	9.4	10.7
2	15.2	15.1	15.2	13.7	13.3	13.4	14.6	11.7	12.8	11.9	9.1	10.4
3	15.1	14.9	15.0	13.9	13.3	13.5	14.9	11.9	13.2	12.9	8.5	10.4
4	15.0	14.6	14.8	13.9	13.3	13.5	13.9	12.2	12.9	12.2	8.6	10.0
5	15.0	14.8	14.8	14.9	13.2	13.8	13.1	12.2	12.6	13.1	8.2	10.1
6	15.0	14.7	14.8	14.7	13.2	13.7	13.8	12.4	13.0	13.2	7.9	10.0
7	15.0	14.7	14.9	15.2	13.4	14.1	13.6	12.2	12.7	12.6	7.8	9.6
8	14.7	14.5	14.6	15.5	13.4	14.1	14.1	12.0	12.8	12.4	7.6	9.3
9	14.8	14.5	14.6	15.8	13.3	14.2	13.7	11.7	12.5	11.7	7.6	9.3
10	14.9	14.6	14.7	15.4	13.0	13.8	13.1	11.7	12.1	11.0	7.7	8.8
11	14.6	14.4	14.5	14.2	12.8	13.3	12.3	11.9	12.1	10.0	7.8	8.7
12	14.5	14.3	14.4	13.6	12.8	13.2	12.5	12.2	12.3	10.2	8.3	9.0
13	14.5	14.0	14.3	13.7	13.3	13.4	12.6	12.5	12.6	10.1	8.7	9.4
14	14.3	13.8	14.0	13.9	13.3	13.6	12.7	12.5	12.6	10.7	8.6	9.5
15	14.2	13.7	13.9	13.8	13.3	13.6	12.7	12.3	12.5	10.0	8.4	9.0
16	14.3	13.8	14.0	14.0	13.4	13.6	12.3	12.1	12.2	10.0	8.5	9.2
17	14.3	13.7	14.0	14.4	13.4	13.8	12.3	11.9	12.1	10.0	8.7	9.3
18	14.7	14.0	14.3	14.6	13.2	13.8	12.0	11.4	11.8	10.0	8.6	9.3
19	14.2	13.8	14.0	14.4	13.2	13.7	11.4	11.2	11.3	9.9	8.4	9.1
20	14.5	13.8	14.0	15.0	13.2	13.9	11.6	11.2	11.4	9.8	8.3	9.0
21	14.8	13.9	14.3	15.1	13.2	13.9	12.0	11.6	11.8	9.5	8.2	8.8
22	14.9	13.7	14.3	15.0	13.2	13.8	12.0	11.6	11.8	9.4	7.9	8.5
23	14.6	13.7	14.0	15.3	13.1	13.9	11.8	11.2	11.6	9.0	8.0	8.5
24	14.4	13.5	13.8	14.6	13.0	13.6	11.5	11.0	11.2	9.2	8.5	8.9
25	14.9	13.5	14.0	15.5	12.5	13.6	11.7	11.1	11.4	9.4	9.0	9.2
26	14.7	13.3	13.9	15.9	12.3	13.7	11.6	10.9	11.3	9.7	8.2	9.3
27	13.9	13.2	13.4	15.9	12.3	13.6	11.6	10.7	11.1	9.9	8.3	9.2
28	13.9	13.0	13.4	15.1	12.2	13.3	11.6	10.5	11.0	9.8	8.6	9.2
29	---	---	---	15.1	12.0	13.2	11.5	9.8	10.6	9.8	8.6	9.2
30	---	---	---	15.4	11.8	13.3	12.1	9.6	10.7	9.7	9.2	9.4
31	---	---	---	14.6	11.6	12.6	---	---	---	9.5	8.8	9.2
Month	15.2	13.0	14.3	15.9	11.6	13.6	14.9	9.6	12.0	13.2	7.6	9.3

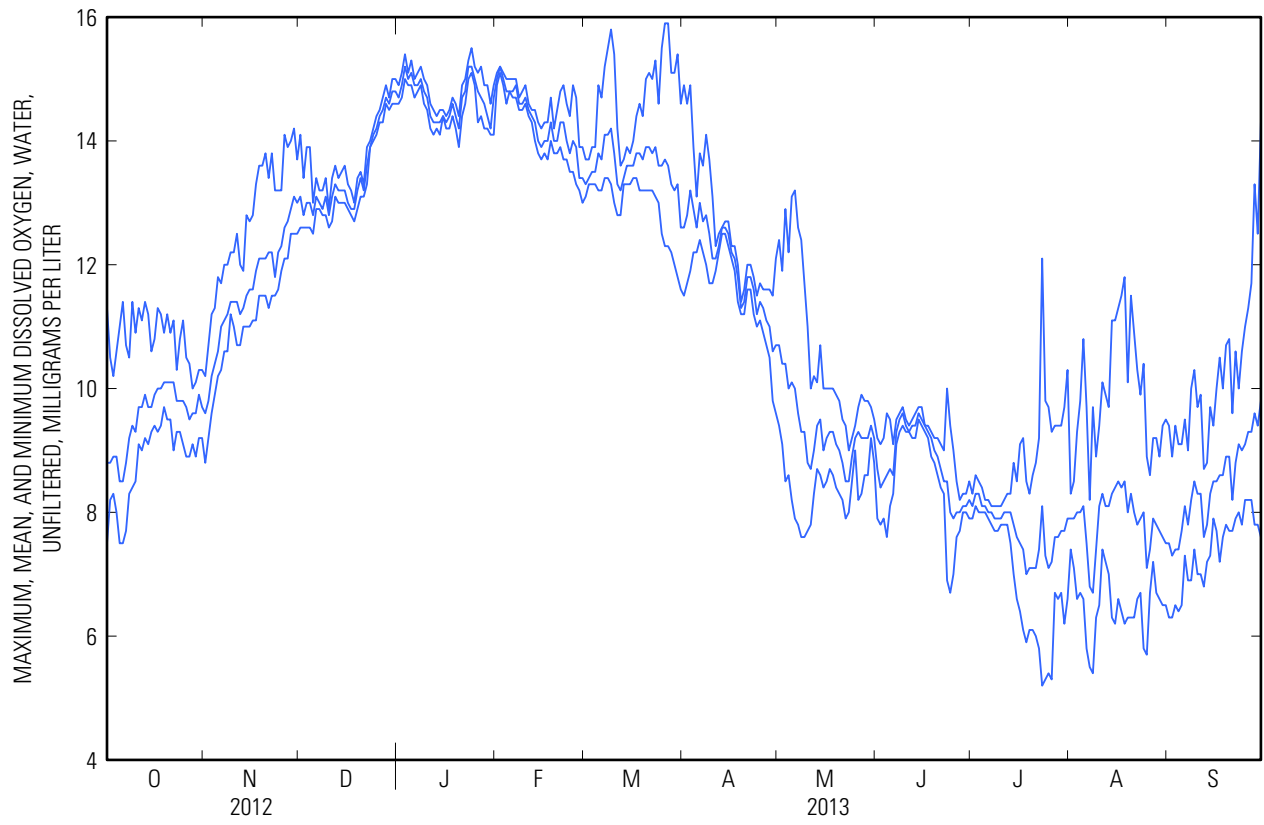
04249000 OSWEGO RIVER AT LOCK 7, OSWEGO, NY—Continued

DISSOLVED OXYGEN, WATER, UNFILTERED, MILLIGRAMS PER LITER
WATER YEAR OCTOBER 2012 TO SEPTEMBER 2013

Day	Max	Min	Mean	Max	Min	Mean	Max	Min	Mean	Max	Min	Mean
	June			July			August			September		
1	9.2	7.9	8.7	8.3	7.9	8.1	8.3	7.4	7.9	9.4	6.3	7.5
2	9.1	7.8	8.4	8.6	8.1	8.3	8.5	7.1	7.9	8.9	6.3	7.3
3	9.2	7.9	8.5	8.5	8.0	8.3	9.3	6.6	8.0	9.4	6.5	7.4
4	9.6	7.6	8.6	8.4	8.0	8.1	9.8	6.7	8.0	9.1	6.4	7.4
5	9.5	8.1	8.7	8.2	8.0	8.1	10.8	6.6	8.1	9.1	6.5	7.7
6	9.1	8.3	8.6	8.2	7.9	8.0	9.7	5.8	7.5	9.5	7.3	8.1
7	9.5	9.1	9.3	8.1	7.8	8.0	8.2	5.5	6.8	9.0	6.9	7.8
8	9.6	9.3	9.5	8.1	7.7	7.9	9.7	5.4	6.7	10.0	6.9	8.2
9	9.7	9.4	9.6	8.1	7.7	7.9	8.9	6.3	7.4	10.3	7.4	8.5
10	9.5	9.3	9.4	8.1	7.8	7.9	9.4	6.5	8.1	9.7	7.0	8.3
11	9.4	9.3	9.3	8.2	7.8	8.0	10.1	7.4	8.3	9.9	7.0	8.3
12	9.5	9.2	9.4	8.3	7.8	8.0	9.9	7.2	8.1	8.7	6.8	7.6
13	9.6	9.2	9.4	8.3	7.5	8.0	9.7	7.0	8.1	8.8	7.2	7.8
14	9.7	9.5	9.6	8.8	7.0	7.8	11.1	6.3	8.3	9.7	7.3	8.3
15	9.7	9.4	9.5	8.5	6.6	7.6	11.1	6.2	8.4	9.4	7.9	8.5
16	9.4	9.3	9.4	9.1	6.4	7.5	11.3	6.6	8.5	10.0	7.7	8.5
17	9.4	9.2	9.3	9.2	6.1	7.4	11.5	6.4	8.4	10.5	7.2	8.6
18	9.3	8.9	9.2	8.5	5.9	7.0	11.8	6.2	8.5	10.0	7.6	8.6
19	9.2	8.8	9.0	8.3	6.1	7.1	10.1	6.3	8.0	10.7	7.8	8.9
20	9.2	8.6	8.9	8.6	6.1	7.1	11.5	6.3	8.3	10.8	7.7	8.9
21	9.1	8.4	8.7	8.8	6.0	7.1	10.9	6.3	8.0	9.6	7.7	8.2
22	9.0	8.3	8.5	9.2	5.8	7.4	10.3	6.6	7.8	10.6	7.9	8.8
23	10.0	6.9	8.5	12.1	5.2	8.1	9.9	6.7	7.9	10.0	8.0	9.1
24	9.4	6.7	8.0	9.8	5.3	7.3	10.4	5.8	8.0	10.6	7.8	9.0
25	9.0	7.0	7.9	9.7	5.4	7.1	8.9	5.7	7.1	11.0	8.2	9.1
26	8.5	7.6	8.0	9.3	5.3	7.2	8.6	6.7	7.4	11.3	8.2	9.3
27	8.2	7.7	8.0	9.4	6.7	7.6	9.2	7.2	7.9	11.7	8.2	9.3
28	8.3	8.0	8.1	9.4	6.6	7.6	9.2	6.7	7.8	13.3	7.8	9.6
29	8.3	8.0	8.1	9.4	6.7	7.7	8.9	6.6	7.7	12.5	7.8	9.4
30	8.5	7.9	8.2	9.7	6.2	7.7	9.4	6.5	7.6	14.3	7.6	9.8
31	---	---	---	10.3	6.6	7.9	9.5	6.5	7.5	---	---	---
Month	10.0	6.7	8.8	12.1	5.2	7.7	11.8	5.4	7.9	14.3	6.3	8.5

	Max	Min	Mean
Year	15.9	5.2	10.9

04249000 OSWEGO RIVER AT LOCK 7, OSWEGO, NY—Continued



04249000 OSWEGO RIVER AT LOCK 7, OSWEGO, NY—Continued

TURBIDITY, WATER, UNFILT, NEAR IR LED LIGHT, 780-900 NM, DETECT ANG. 90 DEG, FORMAZIN NEPHELOMETRIC UNITS
WATER YEAR OCTOBER 2012 TO SEPTEMBER 2013

Day	Max	Min	Mean	Max	Min	Mean	Max	Min	Mean	Max	Min	Mean
	October			November			December			January		
1	5.4	1.6	2.6	3.8	1.8	2.6	2.4	1.2	1.6	3.1	2.6	2.8
2	4.6	2.0	2.9	2.3	1.1	1.6	2.1	1.0	1.5	2.8	2.2	2.4
3	5.7	2.2	3.4	2.3	1.1	1.5	2.6	1.0	1.5	2.7	2.3	2.4
4	5.2	2.1	3.1	1.8	1.1	1.4	2.4	1.1	1.4	2.3	2.0	2.1
5	4.8	2.0	2.9	1.9	0.8	1.2	3.9	1.7	2.6	2.4	2.0	2.1
6	5.0	2.5	3.4	3.2	0.9	1.8	6.7	2.9	4.4	2.2	1.9	2.0
7	4.8	2.1	3.6	2.6	1.5	1.9	8.1	3.6	5.5	2.2	1.9	2.0
8	5.6	2.2	3.6	4.1	1.5	2.0	6.8	2.8	4.2	2.2	2.0	2.1
9	5.8	2.3	3.5	4.0	1.5	2.1	5.2	2.5	3.6	2.2	1.9	2.0
10	5.9	2.5	3.6	2.7	1.3	1.6	3.2	2.3	2.6	2.3	2.0	2.1
11	4.9	2.6	3.3	2.4	1.3	1.7	3.8	2.5	3.0	2.2	1.9	2.0
12	4.2	2.3	3.1	2.5	1.3	---	5.3	3.7	4.6	2.3	2.0	2.1
13	4.8	2.7	3.9	---	---	---	4.6	3.3	3.9	3.0	2.1	2.4
14	6.4	3.7	4.9	---	---	---	4.5	2.6	3.4	6.5	2.7	4.1
15	6.0	0.9	2.8	2.1	1.0	1.3	4.2	2.8	3.2	8.9	5.0	7.1
16	2.5	0.9	1.5	1.6	0.9	1.1	4.4	2.7	3.4	5.1	3.8	4.4
17	1.9	0.9	1.3	2.0	0.9	1.1	5.1	2.5	3.4	4.6	3.8	4.2
18	2.6	1.3	2.0	3.3	0.9	1.5	6.5	3.3	4.8	4.5	3.1	3.9
19	3.6	1.7	2.4	2.9	0.9	1.4	7.0	5.2	6.3	3.2	2.4	2.9
20	3.6	1.6	2.4	3.0	0.8	1.4	7.2	5.8	6.4	3.0	2.3	2.5
21	3.1	1.7	2.2	1.5	1.0	1.1	8.8	5.2	6.4	2.6	2.2	2.3
22	3.5	1.4	2.1	1.9	0.8	1.1	15	7.3	11	2.5	2.2	2.3
23	3.3	1.5	2.2	2.5	0.9	1.3	13	9.7	11	---	---	---
24	3.4	1.7	2.2	2.5	0.9	1.5	11	5.7	7.7	---	---	---
25	2.9	1.5	1.8	4.4	0.9	1.8	6.8	5.4	6.0	2.1	1.7	---
26	2.8	1.5	1.9	2.3	0.8	1.1	7.6	6.1	6.8	2.2	1.6	---
27	2.9	1.4	2.0	1.5	0.8	1.1	7.4	5.2	6.1	---	---	---
28	2.8	1.6	2.1	2.1	1.0	1.4	6.0	4.5	4.9	2.6	2.5	---
29	4.0	1.8	2.6	2.2	1.5	1.8	4.7	3.5	4.0	3.2	2.1	2.6
30	4.6	2.5	3.6	2.1	1.3	1.7	3.8	3.0	3.3	4.7	2.1	3.2
31	4.6	2.6	3.3	---	---	---	3.1	2.7	2.9	4.8	2.6	3.4
Month	6.4	0.9	2.8	---	---	---	15	1.0	4.6	---	---	---

04249000 OSWEGO RIVER AT LOCK 7, OSWEGO, NY—Continued

TURBIDITY, WATER, UNFILT, NEAR IR LED LIGHT, 780-900 NM, DETECT ANG. 90 DEG, FORMAZIN NEPHELOMETRIC UNITS
WATER YEAR OCTOBER 2012 TO SEPTEMBER 2013

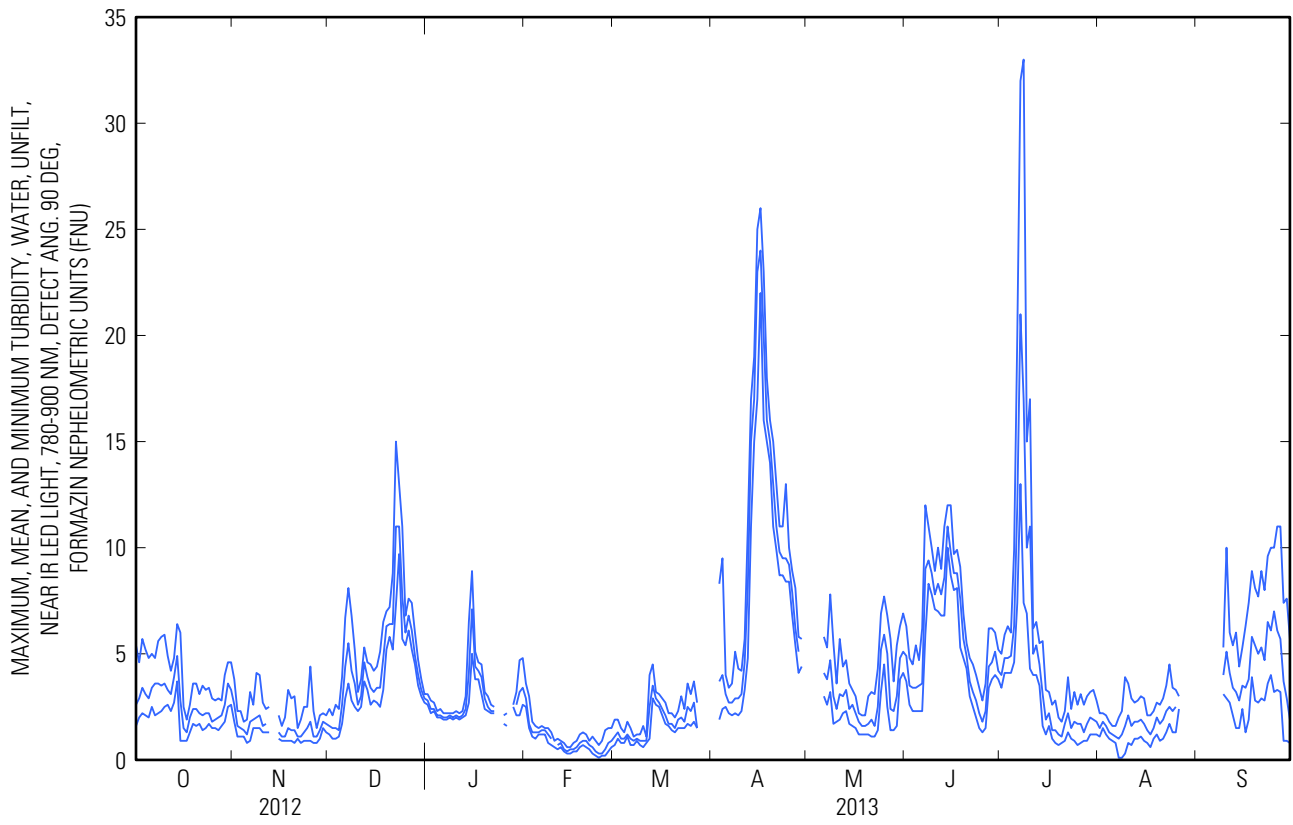
Day	Max	Min	Mean	Max	Min	Mean	Max	Min	Mean	Max	Min	Mean
	February			March			April			May		
1	3.6	2.5	2.9	1.9	0.7	1.1	---	---	---	---	---	---
2	3.0	1.5	1.7	1.9	1.0	1.3	---	---	---	---	---	---
3	1.8	1.1	1.3	1.5	0.8	1.0	8.3	1.9	3.7	---	---	---
4	1.6	1.0	1.3	1.3	0.8	1.0	9.5	2.4	4.0	---	---	---
5	1.5	1.2	1.3	1.8	1.1	1.2	4.0	2.5	3.1	---	---	---
6	1.6	1.2	1.4	1.5	0.7	1.0	3.4	2.2	2.7	5.8	3.0	4.1
7	1.5	1.2	1.4	1.1	0.7	0.9	3.6	2.1	2.7	5.3	2.6	3.8
8	1.5	0.8	1.2	1.2	0.9	1.0	5.1	2.2	2.9	7.8	3.2	4.7
9	1.3	0.7	1.0	1.2	0.7	0.9	4.3	2.1	2.9	5.5	1.7	3.0
10	0.9	0.6	---	1.6	0.6	0.9	4.2	2.3	3.1	3.6	1.8	2.4
11	1.0	0.5	0.7	1.1	0.8	0.9	5.7	3.3	4.6	5.7	1.9	3.1
12	0.9	0.6	0.8	4.0	1.0	2.5	11	4.8	8.2	4.4	2.2	3.0
13	0.8	0.4	0.5	4.5	2.9	3.5	17	11	15	4.7	2.3	3.3
14	0.6	0.3	0.4	3.2	2.6	2.9	19	15	17	3.6	1.7	2.4
15	0.6	0.3	0.5	3.1	2.5	2.7	25	17	23	3.3	1.6	2.6
16	0.8	0.4	0.5	2.9	2.1	2.4	26	22	24	3.0	1.5	2.2
17	0.9	0.4	0.6	2.7	1.7	2.1	23	16	20	2.2	1.2	1.8
18	1.2	0.6	0.8	2.2	1.6	1.7	18	15	16	2.1	1.2	1.6
19	1.3	0.7	0.9	2.2	1.4	1.7	16	14	15	2.1	1.2	1.6
20	1.2	0.6	0.9	2.0	1.3	1.5	15	11	13	3.0	1.2	1.7
21	0.9	0.5	0.7	2.3	1.5	1.9	13	9.9	11	3.2	1.1	1.9
22	1.1	0.3	0.6	3.0	1.5	2.0	11	8.7	9.8	3.1	1.1	1.6
23	0.9	0.2	0.4	2.4	1.5	1.8	11	8.7	9.5	4.3	1.4	2.5
24	0.7	0.1	0.3	3.6	1.7	2.5	13	8.4	9.5	6.9	3.2	5.2
25	0.9	0.2	0.3	3.1	1.6	2.3	10	8.4	9.2	7.7	4.5	5.9
26	1.4	0.2	0.5	3.7	1.8	2.7	8.9	6.8	7.9	6.8	2.5	5.0
27	1.5	0.4	0.8	2.7	1.5	1.5	8.1	5.4	6.2	5.7	1.4	2.4
28	1.5	0.6	0.9	---	---	---	5.8	4.1	5.1	3.7	1.4	2.3
29	---	---	---	---	---	---	5.7	4.4	---	5.4	1.6	3.0
30	---	---	---	---	---	---	---	---	---	6.3	3.8	4.8
31	---	---	---	---	---	---	---	---	---	6.9	4.1	5.1
Month	3.6	0.1	---	---	---	---	---	---	---	---	---	---

04249000 OSWEGO RIVER AT LOCK 7, OSWEGO, NY—Continued

TURBIDITY, WATER, UNFILT, NEAR IR LED LIGHT, 780-900 NM, DETECT ANG. 90 DEG, FORMAZIN NEPHELOMETRIC UNITS
WATER YEAR OCTOBER 2012 TO SEPTEMBER 2013

Day	Max	Min	Mean	Max	Min	Mean	Max	Min	Mean	Max	Min	Mean
	June			July			August			September		
1	6.3	3.7	4.9	5.0	3.4	4.0	2.2	1.1	1.5	---	---	---
2	4.8	2.6	3.5	5.9	4.1	4.8	2.2	1.5	1.8	---	---	---
3	4.5	2.3	3.4	6.3	4.1	4.8	2.1	1.2	1.6	---	---	---
4	5.4	2.3	3.4	6.0	4.1	4.9	1.8	1.0	1.3	---	---	---
5	4.7	2.3	3.5	9.9	4.6	6.3	1.6	0.9	1.2	---	---	---
6	6.2	2.3	3.6	20	7.4	12	1.6	0.8	1.1	---	---	---
7	12	5.9	9.0	32	13	21	2.0	0.1	1.0	---	---	---
8	11	8.3	9.4	33	7.4	17	2.3	0.1	1.2	---	---	---
9	10	7.8	8.8	15	6.9	10	3.9	0.3	1.6	5.3	3.1	4.0
10	8.9	7.1	7.8	17	4.3	11	3.6	0.8	2.1	10	2.9	5.1
11	10	7.0	8.3	6.2	4.0	5.0	2.9	0.7	1.6	6.0	2.7	4.1
12	9.0	6.8	7.8	6.5	4.0	5.4	2.7	1.0	1.8	5.4	2.1	3.4
13	11	6.8	8.6	5.5	3.5	4.5	2.8	1.0	1.8	6.0	1.5	3.2
14	12	10	11	5.6	1.6	3.1	3.0	1.1	1.9	4.4	1.5	2.8
15	12	8.7	9.8	3.3	1.2	1.9	2.9	0.9	1.7	5.3	2.4	3.5
16	9.7	8.0	8.8	3.2	1.6	2.2	2.1	0.8	1.4	6.3	1.3	3.4
17	9.9	8.1	8.8	2.6	1.0	1.4	2.1	0.6	1.2	7.4	1.9	3.8
18	9.1	5.3	7.6	2.8	0.8	1.4	2.3	1.0	1.5	8.9	3.9	5.8
19	6.9	4.8	5.7	2.0	0.7	1.2	2.7	1.2	2.0	8.1	2.8	5.4
20	5.5	4.3	4.9	1.8	0.8	1.1	2.6	0.9	1.7	7.7	2.7	5.0
21	4.8	3.0	3.7	2.3	0.9	1.7	2.9	1.0	1.9	8.9	2.9	5.3
22	4.5	2.5	3.2	3.9	1.3	2.2	3.5	1.3	2.3	8.0	2.8	4.7
23	4.0	2.0	2.8	2.4	1.0	1.5	4.5	1.7	2.5	9.6	3.6	6.5
24	3.4	1.5	2.2	3.2	0.9	1.8	3.4	1.3	2.3	10	4.0	6.1
25	2.8	1.3	1.8	2.6	0.7	1.7	3.3	1.3	2.5	10	3.2	7.0
26	3.6	1.5	2.3	3.1	0.8	1.7	3.0	2.4	---	11	3.3	6.1
27	6.2	3.4	4.4	2.6	0.9	1.3	---	---	---	11	3.2	5.7
28	6.2	3.8	4.6	3.0	0.9	1.7	---	---	---	7.4	0.9	3.7
29	6.0	4.0	5.1	3.2	1.2	2.0	---	---	---	7.6	0.9	2.9
30	5.2	3.8	4.2	3.3	1.2	1.9	---	---	---	5.7	0.8	1.9
31	---	---	---	2.8	1.2	1.8	---	---	---	---	---	---
Month	12	1.3	5.8	33	0.7	4.6	---	---	---	---	---	---

04249000 OSWEGO RIVER AT LOCK 7, OSWEGO, NY—Continued



04249000 OSWEGO RIVER AT LOCK 7, OSWEGO, NY—Continued

WATER-QUALITY DATA
WATER YEAR OCTOBER 2012 TO SEPTEMBER 2013

Part 1 of 20

[FNU, Formazin nephelometric units; LED, light-emitting diode; N, nitrogen; P, phosphorus; ft³/s, cubic feet per second; mg/L, milligrams per liter; nm, nanometers; °C, degrees Celsius; µS/cm, microsiemens per centimeter; µg/L, micrograms per liter; <, less than; E, estimated; M, presence verified but not quantified]

Begin date	Begin time	Discharge, instantaneous, ft ³ /s (00061)	Dissolved oxygen, water, unfiltered, mg/L (00300)	pH, water, unfiltered, field, units (00400)	Specific conductance, water, unfiltered, µS/cm at 25°C (00095)	Temperature, water, °C (00010)	Turbidity, water, unfiltered, monochrome near infrared LED light, 780-900 nm, detection angle 90 +/- 2.5 degrees, FNU (63680)	Caffeine-13C, surrogate, Schedule 4433 and Labcode 8033 (WWWW), water, unfiltered, percent recovery (62840)	Decafluorobiphenyl, surrogate, Schedule 4433 and Labcode 8033 (WWWW), water, unfiltered, percent recovery (62841)
10-01-2012	0800	834	8.5	8.0	993	17.1	--	59.2	60.0
10-17-2012	0740	3,300	--	8.4	567	12.6	--	--	--
10-29-2012	1630	5,120	10.0	8.1	933	12.9	.8	--	--
11-05-2012	0915	1,900	10.9	8.0	941	9.4	.0	68.7	55.0
12-03-2012	0855	1,560	13.0	8.1	694	4.2	2.2	67.4	54.9
12-18-2012	1815	11,000	12.9	8.0	534	4.1	7.8	--	--
12-19-2012	0915	11,000	13.2	8.0	569	4.0	12	--	--
12-21-2012	1015	12,500	13.2	8.0	674	4.0	8.0	--	--
12-22-2012	0015	14,400	13.3	8.0	590	3.5	10	--	--
12-22-2012	0315	16,000	13.5	8.0	578	3.4	16	--	--
12-22-2012	1300	13,700	13.7	8.0	563	3.0	18	--	--
01-07-2013	0920	10,000	15.0	7.6	549	.5	3.5	65.4	56.3
01-31-2013	0805	12,900	14.7	7.8	612	.0	3.0	--	--
01-31-2013	1545	13,100	14.8	7.8	578	.1	3.0	--	--
02-04-2013	1115	11,200	15.0	7.9	681	.0	.7	--	--
03-04-2013	0935	7,910	14.4	8.0	721	.9	.0	--	--
03-12-2013	1000	11,900	13.2	8.0	634	3.2	3.7	--	--
03-12-2013	1105	13,100	13.3	8.0	632	3.3	3.0	--	--
03-12-2013	1625	13,100	13.5	8.0	624	3.2	3.2	--	--
03-13-2013	0105	12,200	13.4	8.0	616	3.0	3.9	--	--
03-13-2013	0750	11,200	13.5	8.0	619	2.9	4.3	--	--
04-01-2013	0855	3,530	13.0	8.3	892	5.7	10	--	--
04-04-2013	0145	7,850	12.6	8.2	897	4.2	5.0	--	--
04-04-2013	1200	7,960	13.6	8.4	969	5.2	2.5	--	--
04-04-2013	1930	7,960	12.3	8.2	1,060	5.2	3.6	--	--
04-06-2013	1200	7,960	13.8	8.4	562	5.0	2.7	--	--
04-06-2013	1500	7,640	13.7	8.5	560	5.1	2.5	--	--
04-07-2013	1730	7,330	13.2	8.4	630	5.4	3.4	--	--
04-12-2013	1100	14,200	12.3	8.1	779	6.4	8.4	--	--
04-12-2013	1300	15,700	12.4	8.1	838	6.4	8.7	--	--
04-12-2013	1745	17,100	12.4	8.1	860	6.2	9.6	--	--
04-13-2013	0830	17,100	12.6	8.1	637	6.0	15	--	--
04-13-2013	2300	14,200	12.6	8.1	748	6.1	17	--	--
04-14-2013	0830	17,300	12.7	8.1	750	6.1	18	--	--
04-15-2013	0830	17,300	12.6	8.1	670	6.4	23	--	--
05-06-2013	0845	2,490	10.8	8.3	824	16.7	3.2	66.2	55.7
05-20-2013	1000	2,710	9.5	8.2	817	17.6	1.7	--	--
06-03-2013	0835	7,390	8.6	8.1	679	20.7	4.7	--	--

04249000 OSWEGO RIVER AT LOCK 7, OSWEGO, NY—Continued

06-14-2013	1050	19,900	9.7	8.0	498	17.9	15	--	--
-------------------	------	--------	-----	-----	-----	------	----	----	----

04249000 OSWEGO RIVER AT LOCK 7, OSWEGO, NY—Continued

WATER-QUALITY DATA
WATER YEAR OCTOBER 2012 TO SEPTEMBER 2013

Part 2 of 20

[FNU, Formazin nephelometric units; LED, light-emitting diode; N, nitrogen; P, phosphorus; ft³/s, cubic feet per second; mg/L, milligrams per liter; nm, nanometers; °C, degrees Celsius; µS/cm, microsiemens per centimeter; µg/L, micrograms per liter; <, less than; E, estimated; M, presence verified but not quantified]

Begin date	Fluor- anthene- d10, surrogate, Schedule 4433 and Labcode 8033 (WWWW), water, unfiltered, percent recovery (62842)	Sample volume, Schedule 4433 and Labcode 8033 (WWWW), milliliters (99963)	Dissolved solids dried at 180°C, water, filtered, mg/L (70300)	Suspended solids, water, unfiltered, mg/L (00530)	Calcium, water, filtered, mg/L (00915)	Magne- sium, water, filtered, mg/L (00925)	Chloride, water, filtered, mg/L (00940)	Fluoride, water, filtered, mg/L (00950)	Sulfate, water, filtered, mg/L (00945)	Ammonia, water, filtered, mg/L as N (00608)
10-01-2012	78.6	930	567	< 15	69.2	17.2	176	0.13	98.9	0.073
10-17-2012	--	--	321	< 15	--	--	--	--	--	--
10-29-2012	--	--	--	--	77.8	17.5	175	.14	104	.111
11-05-2012	73.2	960	564	< 15	67.5	16.2	178	.11	88.9	.124
12-03-2012	75.4	933	392	< 15	61.3	14.6	94.4	.10	75.2	.046
12-18-2012	--	--	--	--	--	--	61.1	--	--	.039
12-19-2012	--	--	--	--	57.3	13.2	77.2	.10	63.1	.038
12-21-2012	--	--	--	--	--	--	99.0	--	--	.049
12-22-2012	--	--	--	--	--	--	82.0	--	--	.038
12-22-2012	--	--	--	--	--	--	76.1	--	--	.039
12-22-2012	--	--	--	--	--	--	73.7	--	--	.032
01-07-2013	77.4	935	305	< 15	52.1	12.7	64.9	.09	55.5	.044
01-31-2013	--	--	--	--	--	--	91.8	--	--	.058
01-31-2013	--	--	--	--	50.6	12.0	84.4	.09	56.3	.050
02-04-2013	--	--	381	< 15	56.8	13.3	107	.09	69.0	.067
03-04-2013	--	--	414	< 15	60.0	13.8	111	.08	67.1	.036
03-12-2013	--	--	--	--	--	--	89.0	--	--	.061
03-12-2013	--	--	--	--	53.9	12.4	87.5	E .08	60.4	.058
03-12-2013	--	--	--	--	--	--	87.3	--	--	.051
03-13-2013	--	--	--	--	--	--	86.7	--	--	.045
03-13-2013	--	--	--	--	--	--	84.4	--	--	.040
04-01-2013	--	--	510	< 15	67.6	15.2	158	.13	78.2	.053
04-04-2013	--	--	--	--	--	--	155	--	--	.073
04-04-2013	--	--	--	--	--	--	163	--	--	.073
04-04-2013	--	--	--	--	70.7	16.1	191	.13	85.0	.088
04-06-2013	--	--	--	--	--	--	122	--	--	.038
04-06-2013	--	--	--	--	--	--	75.4	--	--	.033
04-07-2013	--	--	--	--	--	--	88.7	--	--	.027
04-12-2013	--	--	--	--	--	--	134	--	--	.087
04-12-2013	--	--	--	--	--	--	150	--	--	.090
04-12-2013	--	--	--	--	61.8	13.4	155	.10	71.4	.086
04-13-2013	--	--	--	--	--	--	113	--	--	.052
04-13-2013	--	--	--	--	--	--	108	--	--	.048
04-14-2013	--	--	--	--	--	--	117	--	--	.051
04-15-2013	--	--	390	19	59.5	13.7	95.9	.10	68.6	.062
05-06-2013	67.6	930	472	< 15	66.2	15.1	138	.11	71.4	.038
05-20-2013	--	--	457	< 15	--	--	--	--	--	--
06-03-2013	--	--	410	< 15	57.9	13.7	101	.13	66.7	.067

04249000 OSWEGO RIVER AT LOCK 7, OSWEGO, NY—Continued

06-14-2013 -- -- -- -- 47.1 11.6 59.0 .10 46.7 .074

WATER-QUALITY DATA
WATER YEAR OCTOBER 2012 TO SEPTEMBER 2013

Part 3 of 20

[FNU, Formazin nephelometric units; LED, light-emitting diode; N, nitrogen; P, phosphorus; ft³/s, cubic feet per second; mg/L, milligrams per liter; nm, nanometers; °C, degrees Celsius; µS/cm, microsiemens per centimeter; µg/L, micrograms per liter; <, less than; E, estimated; M, presence verified but not quantified]

Begin date	Nitrate plus nitrite, water, filtered, mg/L as N (00631)	Nitrite, water, filtered, mg/L as N (00613)	Orthophosphate, water, filtered, mg/L as P (00671)	Phosphorus, water, unfiltered, mg/L as P (00665)	1,4-Dichloro-	Atrazine,	Bromacil,	Camphor,	Carbaryl,
					benzene, water, unfiltered, recoverable, µg/L (34571)	water, unfiltered, recoverable, µg/L (39630)	water, unfiltered, recoverable, µg/L (30234)	water, unfiltered, recoverable, µg/L (62817)	water, unfiltered, recoverable, µg/L (39750)
10-01-2012	0.704	0.010	0.037	0.058	< .08	0.04	< .16	< .08	< .06
10-17-2012	--	--	.027	.04	--	--	--	--	--
10-29-2012	.700	.013	.022	.044	--	--	--	--	--
11-05-2012	.804	.018	.022	.033	.01	.04	< .16	< .08	< .06
12-03-2012	.762	.008	.018	.028	< .08	.03	< .16	.01	< .06
12-18-2012	.627	.009	.026	.050	--	--	--	--	--
12-19-2012	.678	.008	.023	.047	--	--	--	--	--
12-21-2012	.751	.008	.021	.044	--	--	--	--	--
12-22-2012	.684	.008	.023	.052	--	--	--	--	--
12-22-2012	.673	.006	.024	.076	--	--	--	--	--
12-22-2012	.699	.007	.023	.074	--	--	--	--	--
01-07-2013	.817	.005	.022	.034	< .08	.04	< .16	< .08	< .06
01-31-2013	.783	.006	.022	.043	--	--	--	--	--
01-31-2013	.762	.007	.022	.049	--	--	--	--	--
02-04-2013	.964	.007	.024	.048	--	--	--	--	--
03-04-2013	.875	.007	.015	.031	--	--	--	--	--
03-12-2013	.805	.007	.014	.047	--	--	--	--	--
03-12-2013	.797	.007	.014	.042	--	--	--	--	--
03-12-2013	.996	.009	.014	.038	--	--	--	--	--
03-13-2013	.777	.010	.014	.036	--	--	--	--	--
03-13-2013	.850	.009	.014	.037	--	--	--	--	--
04-01-2013	1.10	.009	.004	.026	--	--	--	--	--
04-04-2013	1.06	.010	< .004	.031	--	--	--	--	--
04-04-2013	1.14	.015	< .004	.027	--	--	--	--	--
04-04-2013	1.21	.015	< .004	.027	--	--	--	--	--
04-06-2013	.834	.014	< .004	.032	--	--	--	--	--
04-06-2013	.580	.008	.005	.031	--	--	--	--	--
04-07-2013	.622	.006	.005	.031	--	--	--	--	--
04-12-2013	.817	.010	.010	.051	--	--	--	--	--
04-12-2013	.939	.010	.011	.052	--	--	--	--	--
04-12-2013	.913	.011	.011	.055	--	--	--	--	--
04-13-2013	.771	.015	.012	.071	--	--	--	--	--
04-13-2013	.772	.013	.011	.070	--	--	--	--	--
04-14-2013	.823	.014	.011	.070	--	--	--	--	--
04-15-2013	.889	.009	.014	.083	--	--	--	--	--
05-06-2013	.940	.012	.010	.035	.01	.05	< .16	< .08	< .06
05-20-2013	--	--	.010	.02	--	--	--	--	--
06-03-2013	.697	.013	.019	.044	--	--	--	--	--
06-14-2013	.977	.020	.030	.081	--	--	--	--	--

04249000 OSWEGO RIVER AT LOCK 7, OSWEGO, NY—Continued

WATER-QUALITY DATA
WATER YEAR OCTOBER 2012 TO SEPTEMBER 2013

Part 4 of 20

[FNU, Formazin nephelometric units; LED, light-emitting diode; N, nitrogen; P, phosphorus; ft³/s, cubic feet per second; mg/L, milligrams per liter; nm, nanometers; °C, degrees Celsius; µS/cm, microsiemens per centimeter; µg/L, micrograms per liter; <, less than; E, estimated; M, presence verified but not quantified]

Begin date	Carbazole, water, unfiltered, recover- able, µg/L (77571)	Chlor- pyrifos, water, unfiltered, recover- able, µg/L (38932)	Diazinon, water, unfiltered, recover- able, µg/L (39570)	Dichlor- vos, water, unfiltered, recover- able, µg/L (30218)	Metalaxyl, water, unfiltered, recover- able, µg/L (04254)	Metola- chlor, water, unfiltered, recover- able, µg/L (82612)	DEET, water, unfiltered, recover- able, µg/L (61947)	p-Cresol, water, unfiltered, recover- able, µg/L (77146)	Penta- chloro- phenol, water, unfiltered, recover- able, µg/L (39032)	Prometon, water, unfiltered, recover- able, µg/L (39056)
10-01-2012	< .020	< .12	< .32	< .08	< .16	0.01	0.06	0.02	< 1.6	< .16
10-17-2012	--	--	--	--	--	--	--	--	--	--
10-29-2012	--	--	--	--	--	--	--	--	--	--
11-05-2012	< .020	< .12	< .32	< .08	< .16	.01	.02	< .08	< 1.6	< .16
12-03-2012	< .020	< .12	< .32	< .08	< .16	.02	.02	.01	< 1.6	< .16
12-18-2012	--	--	--	--	--	--	--	--	--	--
12-19-2012	--	--	--	--	--	--	--	--	--	--
12-21-2012	--	--	--	--	--	--	--	--	--	--
12-22-2012	--	--	--	--	--	--	--	--	--	--
12-22-2012	--	--	--	--	--	--	--	--	--	--
12-22-2012	--	--	--	--	--	--	--	--	--	--
01-07-2013	< .020	< .12	< .32	< .08	< .16	.01	< .04	< .08	< 1.6	< .16
01-31-2013	--	--	--	--	--	--	--	--	--	--
01-31-2013	--	--	--	--	--	--	--	--	--	--
02-04-2013	--	--	--	--	--	--	--	--	--	--
03-04-2013	--	--	--	--	--	--	--	--	--	--
03-12-2013	--	--	--	--	--	--	--	--	--	--
03-12-2013	--	--	--	--	--	--	--	--	--	--
03-12-2013	--	--	--	--	--	--	--	--	--	--
03-13-2013	--	--	--	--	--	--	--	--	--	--
03-13-2013	--	--	--	--	--	--	--	--	--	--
04-01-2013	--	--	--	--	--	--	--	--	--	--
04-04-2013	--	--	--	--	--	--	--	--	--	--
04-04-2013	--	--	--	--	--	--	--	--	--	--
04-04-2013	--	--	--	--	--	--	--	--	--	--
04-06-2013	--	--	--	--	--	--	--	--	--	--
04-06-2013	--	--	--	--	--	--	--	--	--	--
04-07-2013	--	--	--	--	--	--	--	--	--	--
04-12-2013	--	--	--	--	--	--	--	--	--	--
04-12-2013	--	--	--	--	--	--	--	--	--	--
04-12-2013	--	--	--	--	--	--	--	--	--	--
04-13-2013	--	--	--	--	--	--	--	--	--	--
04-13-2013	--	--	--	--	--	--	--	--	--	--
04-14-2013	--	--	--	--	--	--	--	--	--	--
04-15-2013	--	--	--	--	--	--	--	--	--	--
05-06-2013	< .020	< .12	< .32	< .08	< .16	.02	.03	.01	E .3	< .16
05-20-2013	--	--	--	--	--	--	--	--	--	--
06-03-2013	--	--	--	--	--	--	--	--	--	--
06-14-2013	--	--	--	--	--	--	--	--	--	--

04249000 OSWEGO RIVER AT LOCK 7, OSWEGO, NY—Continued

WATER-QUALITY DATA
WATER YEAR OCTOBER 2012 TO SEPTEMBER 2013

Part 5 of 20

[FNU, Formazin nephelometric units; LED, light-emitting diode; N, nitrogen; P, phosphorus; ft³/s, cubic feet per second; mg/L, milligrams per liter; nm, nanometers; °C, degrees Celsius; µS/cm, microsiemens per centimeter; µg/L, micrograms per liter; <, less than; E, estimated; M, presence verified but not quantified]

Begin date	1-Methyl-naphthalene, water, unfiltered, recoverable, µg/L (81696)	2,6-Dimethyl-naphthalene, water, unfiltered, recoverable, µg/L (62805)	2-Methyl-naphthalene, water, unfiltered, recoverable, µg/L (30194)	3,4-Dichlorophenyl isocyanate, water, unfiltered, recoverable, µg/L (63145)	3-beta-Coprostanol, water, unfiltered, recoverable, µg/L (62806)	3-Methyl-1H-indole, water, unfiltered, recoverable, µg/L (62807)	3-tert-Butyl-4-hydroxyanisole, water, unfiltered, recoverable, µg/L (61702)	4-Cumylphenol, water, unfiltered, recoverable, µg/L (62808)	4-n-Octylphenol, water, unfiltered, recoverable, µg/L (62809)	4-Nonylphenol (sum of all isomers), water, unfiltered, recoverable, µg/L (62829)
10-01-2012	< .04	< .04	< .04	E .06	< 1.6	< .04	< .16	< .04	< .02	< 1.6
10-17-2012	--	--	--	--	--	--	--	--	--	--
10-29-2012	--	--	--	--	--	--	--	--	--	--
11-05-2012	< .04	< .04	< .04	< .32	< 1.6	< .04	< .16	< .04	< .02	< 1.6
12-03-2012	< .04	< .04	< .04	< .32	< 1.6	< .04	< .16	.01	< .02	< 1.6
12-18-2012	--	--	--	--	--	--	--	--	--	--
12-19-2012	--	--	--	--	--	--	--	--	--	--
12-21-2012	--	--	--	--	--	--	--	--	--	--
12-22-2012	--	--	--	--	--	--	--	--	--	--
12-22-2012	--	--	--	--	--	--	--	--	--	--
12-22-2012	--	--	--	--	--	--	--	--	--	--
01-07-2013	< .04	< .04	< .04	< .32	E .4	< .04	< .16	< .04	< .02	< 1.6
01-31-2013	--	--	--	--	--	--	--	--	--	--
01-31-2013	--	--	--	--	--	--	--	--	--	--
02-04-2013	--	--	--	--	--	--	--	--	--	--
03-04-2013	--	--	--	--	--	--	--	--	--	--
03-12-2013	--	--	--	--	--	--	--	--	--	--
03-12-2013	--	--	--	--	--	--	--	--	--	--
03-12-2013	--	--	--	--	--	--	--	--	--	--
03-13-2013	--	--	--	--	--	--	--	--	--	--
03-13-2013	--	--	--	--	--	--	--	--	--	--
04-01-2013	--	--	--	--	--	--	--	--	--	--
04-04-2013	--	--	--	--	--	--	--	--	--	--
04-04-2013	--	--	--	--	--	--	--	--	--	--
04-04-2013	--	--	--	--	--	--	--	--	--	--
04-06-2013	--	--	--	--	--	--	--	--	--	--
04-06-2013	--	--	--	--	--	--	--	--	--	--
04-07-2013	--	--	--	--	--	--	--	--	--	--
04-12-2013	--	--	--	--	--	--	--	--	--	--
04-12-2013	--	--	--	--	--	--	--	--	--	--
04-12-2013	--	--	--	--	--	--	--	--	--	--
04-13-2013	--	--	--	--	--	--	--	--	--	--
04-13-2013	--	--	--	--	--	--	--	--	--	--
04-14-2013	--	--	--	--	--	--	--	--	--	--
04-15-2013	--	--	--	--	--	--	--	--	--	--
05-06-2013	< .04	< .04	< .04	< .32	< 1.6	< .04	< .16	< .04	< .02	< 1.6
05-20-2013	--	--	--	--	--	--	--	--	--	--
06-03-2013	--	--	--	--	--	--	--	--	--	--
06-14-2013	--	--	--	--	--	--	--	--	--	--

04249000 OSWEGO RIVER AT LOCK 7, OSWEGO, NY—Continued

WATER-QUALITY DATA
WATER YEAR OCTOBER 2012 TO SEPTEMBER 2013

Part 6 of 20

[FNU, Formazin nephelometric units; LED, light-emitting diode; N, nitrogen; P, phosphorus; ft³/s, cubic feet per second; mg/L, milligrams per liter; nm, nanometers; °C, degrees Celsius; µS/cm, microsiemens per centimeter; µg/L, micrograms per liter; <, less than; E, estimated; M, presence verified but not quantified]

Begin date	4-Nonyl-phenol di-ethoxylate (sum of all isomers), water, unfiltered, recoverable, µg/L (61703)	4-Nonyl-phenol mono-ethoxylate (sum of all isomers), water, unfiltered, recoverable, µg/L (61704)	4-tert-Octyl-phenol di-ethoxylate, water, unfiltered, recoverable, µg/L (62486)	4-tert-Octyl-phenol mono-ethoxylate, water, unfiltered, recoverable, µg/L (62485)	4-tert-Octyl-phenol, water, unfiltered, recoverable, µg/L (62810)	5-Methyl-1H-benzotriazole, water, unfiltered, recoverable, µg/L (61944)	9,10-Anthraquinone, water, unfiltered, recoverable, µg/L (62813)	Acetophenone, water, unfiltered, recoverable, µg/L (62811)	Acetyl hexamethyl tetrahydro naphthalene, water, unfiltered, recoverable, µg/L (62812)	Anthracene, water, unfiltered, recoverable, µg/L (34220)
10-01-2012	< 1.6	< 1.6	< .2	< .6	< .4	< .32	< .04	< .4	< .04	< .02
10-17-2012	--	--	--	--	--	--	--	--	--	--
10-29-2012	--	--	--	--	--	--	--	--	--	--
11-05-2012	E .6	E .17	< .2	< .6	< .4	< .32	< .04	< .4	< .04	< .02
12-03-2012	< 1.6	< 1.6	< .2	< .6	< .4	< .32	< .04	< .4	< .04	< .02
12-18-2012	--	--	--	--	--	--	--	--	--	--
12-19-2012	--	--	--	--	--	--	--	--	--	--
12-21-2012	--	--	--	--	--	--	--	--	--	--
12-22-2012	--	--	--	--	--	--	--	--	--	--
12-22-2012	--	--	--	--	--	--	--	--	--	--
12-22-2012	--	--	--	--	--	--	--	--	--	--
01-07-2013	< 1.6	< 1.6	M	< .6	< .4	< .32	< .04	< .4	< .04	< .02
01-31-2013	--	--	--	--	--	--	--	--	--	--
01-31-2013	--	--	--	--	--	--	--	--	--	--
02-04-2013	--	--	--	--	--	--	--	--	--	--
03-04-2013	--	--	--	--	--	--	--	--	--	--
03-12-2013	--	--	--	--	--	--	--	--	--	--
03-12-2013	--	--	--	--	--	--	--	--	--	--
03-12-2013	--	--	--	--	--	--	--	--	--	--
03-13-2013	--	--	--	--	--	--	--	--	--	--
03-13-2013	--	--	--	--	--	--	--	--	--	--
04-01-2013	--	--	--	--	--	--	--	--	--	--
04-04-2013	--	--	--	--	--	--	--	--	--	--
04-04-2013	--	--	--	--	--	--	--	--	--	--
04-04-2013	--	--	--	--	--	--	--	--	--	--
04-06-2013	--	--	--	--	--	--	--	--	--	--
04-06-2013	--	--	--	--	--	--	--	--	--	--
04-07-2013	--	--	--	--	--	--	--	--	--	--
04-12-2013	--	--	--	--	--	--	--	--	--	--
04-12-2013	--	--	--	--	--	--	--	--	--	--
04-12-2013	--	--	--	--	--	--	--	--	--	--
04-13-2013	--	--	--	--	--	--	--	--	--	--
04-13-2013	--	--	--	--	--	--	--	--	--	--
04-14-2013	--	--	--	--	--	--	--	--	--	--
04-15-2013	--	--	--	--	--	--	--	--	--	--
05-06-2013	E .5	E .15	< .2	< .6	< .4	< .32	< .04	< .4	< .04	< .02
05-20-2013	--	--	--	--	--	--	--	--	--	--
06-03-2013	--	--	--	--	--	--	--	--	--	--
06-14-2013	--	--	--	--	--	--	--	--	--	--

04249000 OSWEGO RIVER AT LOCK 7, OSWEGO, NY—Continued

WATER-QUALITY DATA
WATER YEAR OCTOBER 2012 TO SEPTEMBER 2013

Part 7 of 20

[FNU, Formazin nephelometric units; LED, light-emitting diode; N, nitrogen; P, phosphorus; ft³/s, cubic feet per second; mg/L, milligrams per liter; nm, nanometers; °C, degrees Celsius; µS/cm, microsiemens per centimeter; µg/L, micrograms per liter; <, less than; E, estimated; M, presence verified but not quantified]

Begin date	BDE congener 47, water, unfiltered, recover- able, µg/L (63147)	Benzo[a]- pyrene, water, unfiltered, recover- able, µg/L (34247)	Benzo- phenone, water, unfiltered, recover- able, µg/L (62814)	beta-Sitos- terol, water, unfiltered, recover- able, µg/L (62815)	beta-Stig- mastanol, water, unfiltered, recover- able, µg/L (61948)	Bis(2- ethylhexyl) phthalate, water, unfiltered, recover- able, µg/L (39100)	Bisphenol A, water, unfiltered, recover- able, µg/L (62816)	Caffeine, water, unfiltered, recover- able, µg/L (81436)	Choles- terol, water, unfiltered, recover- able, µg/L (62818)	Cotinine, water, unfiltered, recover- able, µg/L (61945)
10-01-2012	< .04	< .02	< .08	< 4.8	< 3.4	< 2	< .04	0.06	E .2	E .03
10-17-2012	--	--	--	--	--	--	--	--	--	--
10-29-2012	--	--	--	--	--	--	--	--	--	--
11-05-2012	< .04	< .02	.02	< 4.8	< 3.4	< 2	.05	.11	E .7	< .08
12-03-2012	< .04	< .02	.02	E .5	< 3.4	E 1	.06	.06	E .6	< .08
12-18-2012	--	--	--	--	--	--	--	--	--	--
12-19-2012	--	--	--	--	--	--	--	--	--	--
12-21-2012	--	--	--	--	--	--	--	--	--	--
12-22-2012	--	--	--	--	--	--	--	--	--	--
12-22-2012	--	--	--	--	--	--	--	--	--	--
12-22-2012	--	--	--	--	--	--	--	--	--	--
01-07-2013	< .04	< .02	< .08	< 4.8	E .6	< 2	< .04	.04	E .7	< .08
01-31-2013	--	--	--	--	--	--	--	--	--	--
01-31-2013	--	--	--	--	--	--	--	--	--	--
02-04-2013	--	--	--	--	--	--	--	--	--	--
03-04-2013	--	--	--	--	--	--	--	--	--	--
03-12-2013	--	--	--	--	--	--	--	--	--	--
03-12-2013	--	--	--	--	--	--	--	--	--	--
03-12-2013	--	--	--	--	--	--	--	--	--	--
03-13-2013	--	--	--	--	--	--	--	--	--	--
03-13-2013	--	--	--	--	--	--	--	--	--	--
04-01-2013	--	--	--	--	--	--	--	--	--	--
04-04-2013	--	--	--	--	--	--	--	--	--	--
04-04-2013	--	--	--	--	--	--	--	--	--	--
04-04-2013	--	--	--	--	--	--	--	--	--	--
04-06-2013	--	--	--	--	--	--	--	--	--	--
04-06-2013	--	--	--	--	--	--	--	--	--	--
04-07-2013	--	--	--	--	--	--	--	--	--	--
04-12-2013	--	--	--	--	--	--	--	--	--	--
04-12-2013	--	--	--	--	--	--	--	--	--	--
04-12-2013	--	--	--	--	--	--	--	--	--	--
04-13-2013	--	--	--	--	--	--	--	--	--	--
04-13-2013	--	--	--	--	--	--	--	--	--	--
04-14-2013	--	--	--	--	--	--	--	--	--	--
04-15-2013	--	--	--	--	--	--	--	--	--	--
05-06-2013	< .04	< .02	< .08	< 4.8	< 3.4	< 2	.03	.12	E .9	E .06
05-20-2013	--	--	--	--	--	--	--	--	--	--
06-03-2013	--	--	--	--	--	--	--	--	--	--
06-14-2013	--	--	--	--	--	--	--	--	--	--

04249000 OSWEGO RIVER AT LOCK 7, OSWEGO, NY—Continued

WATER-QUALITY DATA
WATER YEAR OCTOBER 2012 TO SEPTEMBER 2013

Part 8 of 20

[FNU, Formazin nephelometric units; LED, light-emitting diode; N, nitrogen; P, phosphorus; ft³/s, cubic feet per second; mg/L, milligrams per liter; nm, nanometers; °C, degrees Celsius; µS/cm, microsiemens per centimeter; µg/L, micrograms per liter; <, less than; E, estimated; M, presence verified but not quantified]

Begin date	Diethyl phthalate, water, unfiltered, recoverable, µg/L (34336)	D-Limonene, water, unfiltered, recoverable, µg/L (62819)	Fluoranthene, water, unfiltered, recoverable, µg/L (34376)	Hexahydrohexamethylcyclopentapyran, water, unfiltered, recoverable, µg/L (62823)	Indole, water, unfiltered, recoverable, µg/L (62824)	Isoborneol, water, unfiltered, recoverable, µg/L (62825)	Iso-phorone, water, unfiltered, recoverable, µg/L (34408)	Isopropylbenzene, water, unfiltered, recoverable, µg/L (77223)	Iso-quinoline, water, unfiltered, recoverable, µg/L (62826)	Menthol, water, unfiltered, recoverable, µg/L (62827)
10-01-2012	< .4	< .16	0.01	0.01	< .04	< .090	0.008	< .04	< 0.04	< .32
10-17-2012	--	--	--	--	--	--	--	--	--	--
10-29-2012	--	--	--	--	--	--	--	--	--	--
11-05-2012	< .4	< .16	< .02	.02	< .04	< .090	< .050	< .04	< 0.04	< .32
12-03-2012	< .4	< .16	< .02	.02	< .04	< .090	.007	< .04	< 0.04	< .32
12-18-2012	--	--	--	--	--	--	--	--	--	--
12-19-2012	--	--	--	--	--	--	--	--	--	--
12-21-2012	--	--	--	--	--	--	--	--	--	--
12-22-2012	--	--	--	--	--	--	--	--	--	--
12-22-2012	--	--	--	--	--	--	--	--	--	--
12-22-2012	--	--	--	--	--	--	--	--	--	--
01-07-2013	< .4	< .16	< .02	.02	< .04	< .090	.008	< .04	< 0.04	< .32
01-31-2013	--	--	--	--	--	--	--	--	--	--
01-31-2013	--	--	--	--	--	--	--	--	--	--
02-04-2013	--	--	--	--	--	--	--	--	--	--
03-04-2013	--	--	--	--	--	--	--	--	--	--
03-12-2013	--	--	--	--	--	--	--	--	--	--
03-12-2013	--	--	--	--	--	--	--	--	--	--
03-12-2013	--	--	--	--	--	--	--	--	--	--
03-13-2013	--	--	--	--	--	--	--	--	--	--
03-13-2013	--	--	--	--	--	--	--	--	--	--
04-01-2013	--	--	--	--	--	--	--	--	--	--
04-04-2013	--	--	--	--	--	--	--	--	--	--
04-04-2013	--	--	--	--	--	--	--	--	--	--
04-04-2013	--	--	--	--	--	--	--	--	--	--
04-06-2013	--	--	--	--	--	--	--	--	--	--
04-06-2013	--	--	--	--	--	--	--	--	--	--
04-07-2013	--	--	--	--	--	--	--	--	--	--
04-12-2013	--	--	--	--	--	--	--	--	--	--
04-12-2013	--	--	--	--	--	--	--	--	--	--
04-12-2013	--	--	--	--	--	--	--	--	--	--
04-13-2013	--	--	--	--	--	--	--	--	--	--
04-13-2013	--	--	--	--	--	--	--	--	--	--
04-14-2013	--	--	--	--	--	--	--	--	--	--
04-15-2013	--	--	--	--	--	--	--	--	--	--
05-06-2013	< .4	< .16	.01	.02	< .04	< .090	.012	< .04	< 0.04	< .32
05-20-2013	--	--	--	--	--	--	--	--	--	--
06-03-2013	--	--	--	--	--	--	--	--	--	--

04249000 OSWEGO RIVER AT LOCK 7, OSWEGO, NY—Continued

06-14-2013 -- -- -- -- -- -- -- -- -- --

WATER-QUALITY DATA
WATER YEAR OCTOBER 2012 TO SEPTEMBER 2013

Part 9 of 20

[FNU, Formazin nephelometric units; LED, light-emitting diode; N, nitrogen; P, phosphorus; ft³/s, cubic feet per second; mg/L, milligrams per liter; nm, nanometers; °C, degrees Celsius; µS/cm, microsiemens per centimeter; µg/L, micrograms per liter; <, less than; E, estimated; M, presence verified but not quantified]

Begin date	Methyl salicylate, water, unfiltered, recoverable, µg/L (62828)	Naphthalene, water, unfiltered, recoverable, µg/L (34696)	Phenanthrene, water, unfiltered, recoverable, µg/L (34461)	Phenol, water, unfiltered, recoverable, µg/L (34694)	Pyrene, water, unfiltered, recoverable, µg/L (34469)	Tetrachloroethene, water, unfiltered, recoverable, µg/L (34475)	Tribromomethane, water, unfiltered, recoverable, µg/L (32104)	Tributyl phosphate, water, unfiltered, recoverable, µg/L (62832)	Triclosan, water, unfiltered, recoverable, µg/L (61708)	Triethyl citrate, water, unfiltered, recoverable, µg/L (62833)
10-01-2012	< .08	< .02	< .02	< .16	M	< .16	< .16	E .011	< .32	< .04
10-17-2012	--	--	--	--	--	--	--	--	--	--
10-29-2012	--	--	--	--	--	--	--	--	--	--
11-05-2012	< .08	< .02	< .02	< .16	< .02	< .16	< .16	.009	.10	< .04
12-03-2012	< .08	< .02	< .02	< .16	< .02	< .16	< .16	E .005	< .32	.02
12-18-2012	--	--	--	--	--	--	--	--	--	--
12-19-2012	--	--	--	--	--	--	--	--	--	--
12-21-2012	--	--	--	--	--	--	--	--	--	--
12-22-2012	--	--	--	--	--	--	--	--	--	--
12-22-2012	--	--	--	--	--	--	--	--	--	--
01-07-2013	< .08	< .02	< .02	< .16	< .02	< .16	< .16	< .064	< .32	< .04
01-31-2013	--	--	--	--	--	--	--	--	--	--
01-31-2013	--	--	--	--	--	--	--	--	--	--
02-04-2013	--	--	--	--	--	--	--	--	--	--
03-04-2013	--	--	--	--	--	--	--	--	--	--
03-12-2013	--	--	--	--	--	--	--	--	--	--
03-12-2013	--	--	--	--	--	--	--	--	--	--
03-12-2013	--	--	--	--	--	--	--	--	--	--
03-13-2013	--	--	--	--	--	--	--	--	--	--
03-13-2013	--	--	--	--	--	--	--	--	--	--
04-01-2013	--	--	--	--	--	--	--	--	--	--
04-04-2013	--	--	--	--	--	--	--	--	--	--
04-04-2013	--	--	--	--	--	--	--	--	--	--
04-04-2013	--	--	--	--	--	--	--	--	--	--
04-06-2013	--	--	--	--	--	--	--	--	--	--
04-06-2013	--	--	--	--	--	--	--	--	--	--
04-07-2013	--	--	--	--	--	--	--	--	--	--
04-12-2013	--	--	--	--	--	--	--	--	--	--
04-12-2013	--	--	--	--	--	--	--	--	--	--
04-12-2013	--	--	--	--	--	--	--	--	--	--
04-13-2013	--	--	--	--	--	--	--	--	--	--
04-13-2013	--	--	--	--	--	--	--	--	--	--
04-14-2013	--	--	--	--	--	--	--	--	--	--
04-15-2013	--	--	--	--	--	--	--	--	--	--
05-06-2013	< .08	< .02	< .02	< .16	.01	< .16	< .16	.016	.14	< .04
05-20-2013	--	--	--	--	--	--	--	--	--	--
06-03-2013	--	--	--	--	--	--	--	--	--	--
06-14-2013	--	--	--	--	--	--	--	--	--	--

04249000 OSWEGO RIVER AT LOCK 7, OSWEGO, NY—Continued

WATER-QUALITY DATA
WATER YEAR OCTOBER 2012 TO SEPTEMBER 2013

Part 10 of 20

[FNU, Formazin nephelometric units; LED, light-emitting diode; N, nitrogen; P, phosphorus; ft³/s, cubic feet per second; mg/L, milligrams per liter; nm, nanometers; °C, degrees Celsius; μS/cm, microsiemens per centimeter; μg/L, micrograms per liter; <, less than; E, estimated; M, presence verified but not quantified]

Begin date	Triphenyl phosphate, water, unfiltered, recoverable, μg/L (62834)	Tris(2-butoxyethyl) phosphate, water, unfiltered, recoverable, μg/L (62830)	Tris(2-chloroethyl) phosphate, water, unfiltered, recoverable, μg/L (62831)	Tris(di-chloroisopropyl) phosphate, water, unfiltered, recoverable, μg/L (61707)	Suspended sediment concentration, mg/L (80154)
10-01-2012	< .08	< .64	0.02	0.03	1
10-17-2012	--	--	--	--	--
10-29-2012	--	--	--	--	--
11-05-2012	< .08	E .42	.03	.04	--
12-03-2012	M	E .42	.02	.03	--
12-18-2012	--	--	--	--	--
12-19-2012	--	--	--	--	--
12-21-2012	--	--	--	--	--
12-22-2012	--	--	--	--	--
12-22-2012	--	--	--	--	--
12-22-2012	--	--	--	--	--
01-07-2013	< .08	< .64	< .16	< .32	6
01-31-2013	--	--	--	--	--
01-31-2013	--	--	--	--	--
02-04-2013	--	--	--	--	--
03-04-2013	--	--	--	--	6
03-12-2013	--	--	--	--	--
03-12-2013	--	--	--	--	--
03-12-2013	--	--	--	--	--
03-13-2013	--	--	--	--	--
03-13-2013	--	--	--	--	--
04-01-2013	--	--	--	--	2
04-04-2013	--	--	--	--	--
04-04-2013	--	--	--	--	--
04-04-2013	--	--	--	--	--
04-06-2013	--	--	--	--	--
04-06-2013	--	--	--	--	--
04-07-2013	--	--	--	--	--
04-12-2013	--	--	--	--	--
04-12-2013	--	--	--	--	--
04-12-2013	--	--	--	--	--
04-13-2013	--	--	--	--	--
04-13-2013	--	--	--	--	--
04-14-2013	--	--	--	--	--
04-15-2013	--	--	--	--	21
05-06-2013	< .08	E .42	< .16	.13	4
05-20-2013	--	--	--	--	--
06-03-2013	--	--	--	--	6
06-14-2013	--	--	--	--	--

04249000 OSWEGO RIVER AT LOCK 7, OSWEGO, NY—Continued

WATER-QUALITY DATA
WATER YEAR OCTOBER 2012 TO SEPTEMBER 2013

Part 11 of 20

[FNU, Formazin nephelometric units; LED, light-emitting diode; N, nitrogen; P, phosphorus; ft³/s, cubic feet per second; mg/L, milligrams per liter; nm, nanometers; °C, degrees Celsius; µS/cm, microsiemens per centimeter; µg/L, micrograms per liter; <, less than; E, estimated; M, presence verified but not quantified]

Begin date	Begin time	Discharge, instantaneous, ft ³ /s (00061)	Dissolved oxygen, water, unfiltered, mg/L (00300)	pH, water, unfiltered, field, standard units (00400)	Specific conductance, water, unfiltered, µS/cm at 25°C (00095)	Temperature, water, °C (00010)	Turbidity, water, unfiltered, monochrome near infrared LED light, 780-900 nm, detection angle 90 +/- 2.5 degrees, FNU (63680)	Caffeine-13C, surrogate, Schedule 4433 and Labcode 8033 (WWWW), water, unfiltered, percent recovery (62840)	Decafluorobiphenyl, surrogate, Schedule 4433 and Labcode 8033 (WWWW), water, unfiltered, percent recovery (62841)
06-17-2013	0810	16,900	9.4	8.0	552	18.7	12	--	--
07-03-2013	0715	11,300	8.3	8.0	582	23.5	7.9	--	--
07-16-2013	0830	4,390	7.5	8.0	640	26.4	4.3	--	--
07-31-2013	1300	8,120	8.5	8.3	725	24.7	6.1	--	--
08-05-2013	0930	4,030	8.8	8.3	594	23.2	3.8	--	--
08-19-2013	0950	1,060	8.8	8.2	688	23.2	2.0	--	--
09-04-2013	0700	2,060	6.8	7.9	624	23.1	--	--	--
09-16-2013	0830	4,470	8.4	8.0	626	19.8	3.9	--	--

04249000 OSWEGO RIVER AT LOCK 7, OSWEGO, NY—Continued

WATER-QUALITY DATA
WATER YEAR OCTOBER 2012 TO SEPTEMBER 2013

Part 12 of 20

[FNU, Formazin nephelometric units; LED, light-emitting diode; N, nitrogen; P, phosphorus; ft³/s, cubic feet per second; mg/L, milligrams per liter; nm, nanometers; °C, degrees Celsius; µS/cm, microsiemens per centimeter; µg/L, micrograms per liter; <, less than; E, estimated; M, presence verified but not quantified]

Begin date	Fluor- anthene- d10, surrogate, Schedule 4433 and Labcode 8033 (WWWW), water, unfiltered, percent recovery (62842)	Sample volume, Schedule 4433 and Labcode 8033 (WWWW), milliliters (99963)	Dissolved solids dried at 180°C, water, filtered, mg/L (70300)	Suspended solids, water, unfiltered, mg/L (00530)	Calcium, water, filtered, mg/L (00915)	Magne- sium, water, filtered, mg/L (00925)	Chloride, water, filtered, mg/L (00940)	Fluoride, water, filtered, mg/L (00950)	Sulfate, water, filtered, mg/L (00945)	Ammonia, water, filtered, mg/L as N (00608)
06-17-2013	--	--	326	15	--	--	--	--	--	--
07-03-2013	--	--	346	< 15	--	--	78.2	--	--	.098
07-16-2013	--	--	355	< 15	--	--	--	--	--	--
07-31-2013	--	--	--	--	63.0	15.6	78.5	.10	45.1	.054
08-05-2013	--	--	333	< 15	--	--	78.5	--	--	.029
08-19-2013	--	--	380	< 15	--	--	--	--	--	--
09-04-2013	--	--	344	< 15	--	--	92.3	--	--	.058
09-16-2013	--	--	352	< 15	--	--	--	--	--	--

WATER-QUALITY DATA
WATER YEAR OCTOBER 2012 TO SEPTEMBER 2013

Part 13 of 20

[FNU, Formazin nephelometric units; LED, light-emitting diode; N, nitrogen; P, phosphorus; ft³/s, cubic feet per second; mg/L, milligrams per liter; nm, nanometers; °C, degrees Celsius; µS/cm, microsiemens per centimeter; µg/L, micrograms per liter; <, less than; E, estimated; M, presence verified but not quantified]

Begin date	Nitrate plus nitrite, water, filtered, mg/L as N (00631)	Nitrite, water, filtered, mg/L as N (00613)	Orthophos- phate, water, filtered, mg/L as P (00671)	Phosphorus, water, unfiltered, mg/L as P (00665)	1,4- Dichloro- benzene, water, unfiltered, recover- able, µg/L (34571)					Atrazine, water, unfiltered, recover- able, µg/L (39630)	Bromacil, water, unfiltered, recover- able, µg/L (30234)	Camphor, water, unfiltered, recover- able, µg/L (62817)	Carbaryl, water, unfiltered, recover- able, µg/L (39750)
					1,4- Dichloro- benzene, water, unfiltered, recover- able, µg/L (34571)	Atrazine, water, unfiltered, recover- able, µg/L (39630)	Bromacil, water, unfiltered, recover- able, µg/L (30234)	Camphor, water, unfiltered, recover- able, µg/L (62817)	Carbaryl, water, unfiltered, recover- able, µg/L (39750)				
06-17-2013	--	--	0.019	0.07	--	--	--	--	--	--	--	--	
07-03-2013	.678	.020	.033	.054	--	--	--	--	--	--	--	--	
07-16-2013	--	--	.037	.05	--	--	--	--	--	--	--	--	
07-31-2013	.734	.018	.035	.073	--	--	--	--	--	--	--	--	
08-05-2013	.416	.007	.019	.046	--	--	--	--	--	--	--	--	
08-19-2013	--	--	.016	.04	--	--	--	--	--	--	--	--	
09-04-2013	.432	.007	.033	.069	--	--	--	--	--	--	--	--	
09-16-2013	--	--	.030	.06	--	--	--	--	--	--	--	--	

04249000 OSWEGO RIVER AT LOCK 7, OSWEGO, NY—Continued

WATER-QUALITY DATA
WATER YEAR OCTOBER 2012 TO SEPTEMBER 2013

Part 14 of 20

[FNU, Formazin nephelometric units; LED, light-emitting diode; N, nitrogen; P, phosphorus; ft³/s, cubic feet per second; mg/L, milligrams per liter; nm, nanometers; °C, degrees Celsius; µS/cm, microsiemens per centimeter; µg/L, micrograms per liter; <, less than; E, estimated; M, presence verified but not quantified]

Begin date	Carbazole, water, unfiltered, recover- able, µg/L (77571)	Chlor- pyrifos, water, unfiltered, recover- able, µg/L (38932)	Diazinon, water, unfiltered, recover- able, µg/L (39570)	Dichlor- vos, water, unfiltered, recover- able, µg/L (30218)	Metalaxyl, water, unfiltered, recover- able, µg/L (04254)	Metola- chlor, water, unfiltered, recover- able, µg/L (82612)	DEET, water, unfiltered, recover- able, µg/L (61947)	p-Cresol, water, unfiltered, recover- able, µg/L (77146)	Penta- chloro- phenol, water, unfiltered, recover- able, µg/L (39032)	Prometon, water, unfiltered, recover- able, µg/L (39056)
06-17-2013	--	--	--	--	--	--	--	--	--	--
07-03-2013	--	--	--	--	--	--	--	--	--	--
07-16-2013	--	--	--	--	--	--	--	--	--	--
07-31-2013	--	--	--	--	--	--	--	--	--	--
08-05-2013	--	--	--	--	--	--	--	--	--	--
08-19-2013	--	--	--	--	--	--	--	--	--	--
09-04-2013	--	--	--	--	--	--	--	--	--	--
09-16-2013	--	--	--	--	--	--	--	--	--	--

WATER-QUALITY DATA
WATER YEAR OCTOBER 2012 TO SEPTEMBER 2013

Part 15 of 20

[FNU, Formazin nephelometric units; LED, light-emitting diode; N, nitrogen; P, phosphorus; ft³/s, cubic feet per second; mg/L, milligrams per liter; nm, nanometers; °C, degrees Celsius; µS/cm, microsiemens per centimeter; µg/L, micrograms per liter; <, less than; E, estimated; M, presence verified but not quantified]

Begin date	1-Methyl- naphtha- lene, water, unfiltered, recover- able, µg/L (81696)	2,6-Di- methyl- naphtha- lene, water, unfiltered, recover- able, µg/L (62805)	2-Methyl- naphtha- lene, water, unfiltered, recover- able, µg/L (30194)	3,4-Di- chloro- phenyl iso- cyanate, water, unfiltered, recover- able, µg/L (63145)	3-beta-Co- prostanol, water, unfiltered, recover- able, µg/L (62806)	3-Methyl- 1H-indole, water, unfiltered, recover- able, µg/L (62807)	3-tert- Butyl-4- hydroxy- anisole, water, unfiltered, recover- able, µg/L (61702)	4-Cumyl- phenol, water, unfiltered, recover- able, µg/L (62808)	4-n-Octyl- phenol, water, unfiltered, recover- able, µg/L (62809)	4-Nonyl- phenol (sum of all isomers), water, unfiltered, recover- able, µg/L (62829)
06-17-2013	--	--	--	--	--	--	--	--	--	--
07-03-2013	--	--	--	--	--	--	--	--	--	--
07-16-2013	--	--	--	--	--	--	--	--	--	--
07-31-2013	--	--	--	--	--	--	--	--	--	--
08-05-2013	--	--	--	--	--	--	--	--	--	--
08-19-2013	--	--	--	--	--	--	--	--	--	--
09-04-2013	--	--	--	--	--	--	--	--	--	--
09-16-2013	--	--	--	--	--	--	--	--	--	--

04249000 OSWEGO RIVER AT LOCK 7, OSWEGO, NY—Continued

WATER-QUALITY DATA
WATER YEAR OCTOBER 2012 TO SEPTEMBER 2013

Part 16 of 20

[FNU, Formazin nephelometric units; LED, light-emitting diode; N, nitrogen; P, phosphorus; ft³/s, cubic feet per second; mg/L, milligrams per liter; nm, nanometers; °C, degrees Celsius; µS/cm, microsiemens per centimeter; µg/L, micrograms per liter; <, less than; E, estimated; M, presence verified but not quantified]

Begin date	4-Nonyl-phenol diethoxylate (sum of all isomers), water, unfiltered, recoverable, µg/L (61703)	4-Nonyl-phenol monoethoxylate (sum of all isomers), water, unfiltered, recoverable, µg/L (61704)	4-tert-Octyl-phenol diethoxylate, water, unfiltered, recoverable, µg/L (62486)	4-tert-Octyl-phenol monoethoxylate, water, unfiltered, recoverable, µg/L (62485)	4-tert-Octyl-phenol, water, unfiltered, recoverable, µg/L (62810)	5-Methyl-1H-benzotriazole, water, unfiltered, recoverable, µg/L (61944)	9,10-Anthraquinone, water, unfiltered, recoverable, µg/L (62813)	Acetophenone, water, unfiltered, recoverable, µg/L (62811)	Acetyl hexamethyl tetrahydro naphthalene, water, unfiltered, recoverable, µg/L (62812)	Anthracene, water, unfiltered, recoverable, µg/L (34220)
06-17-2013	--	--	--	--	--	--	--	--	--	--
07-03-2013	--	--	--	--	--	--	--	--	--	--
07-16-2013	--	--	--	--	--	--	--	--	--	--
07-31-2013	--	--	--	--	--	--	--	--	--	--
08-05-2013	--	--	--	--	--	--	--	--	--	--
08-19-2013	--	--	--	--	--	--	--	--	--	--
09-04-2013	--	--	--	--	--	--	--	--	--	--
09-16-2013	--	--	--	--	--	--	--	--	--	--

WATER-QUALITY DATA
WATER YEAR OCTOBER 2012 TO SEPTEMBER 2013

Part 17 of 20

[FNU, Formazin nephelometric units; LED, light-emitting diode; N, nitrogen; P, phosphorus; ft³/s, cubic feet per second; mg/L, milligrams per liter; nm, nanometers; °C, degrees Celsius; µS/cm, microsiemens per centimeter; µg/L, micrograms per liter; <, less than; E, estimated; M, presence verified but not quantified]

Begin date	BDE congener 47, water, unfiltered, recoverable, µg/L (63147)	Benzo[a]pyrene, water, unfiltered, recoverable, µg/L (34247)	Benzo-phenone, water, unfiltered, recoverable, µg/L (62814)	beta-Sitosterol, water, unfiltered, recoverable, µg/L (62815)	beta-Stig-mastanol, water, unfiltered, recoverable, µg/L (61948)	Bis(2-ethylhexyl) phthalate, water, unfiltered, recoverable, µg/L (39100)	Bisphenol A, water, unfiltered, recoverable, µg/L (62816)	Caffeine, water, unfiltered, recoverable, µg/L (81436)	Cholesterol, water, unfiltered, recoverable, µg/L (62818)	Cotinine, water, unfiltered, recoverable, µg/L (61945)
06-17-2013	--	--	--	--	--	--	--	--	--	--
07-03-2013	--	--	--	--	--	--	--	--	--	--
07-16-2013	--	--	--	--	--	--	--	--	--	--
07-31-2013	--	--	--	--	--	--	--	--	--	--
08-05-2013	--	--	--	--	--	--	--	--	--	--
08-19-2013	--	--	--	--	--	--	--	--	--	--
09-04-2013	--	--	--	--	--	--	--	--	--	--
09-16-2013	--	--	--	--	--	--	--	--	--	--

04249000 OSWEGO RIVER AT LOCK 7, OSWEGO, NY—Continued

WATER-QUALITY DATA
WATER YEAR OCTOBER 2012 TO SEPTEMBER 2013

Part 18 of 20

[FNU, Formazin nephelometric units; LED, light-emitting diode; N, nitrogen; P, phosphorus; ft³/s, cubic feet per second; mg/L, milligrams per liter; nm, nanometers; °C, degrees Celsius; µS/cm, microsiemens per centimeter; µg/L, micrograms per liter; <, less than; E, estimated; M, presence verified but not quantified]

Begin date	Diethyl phthalate, water, unfiltered, recover- able, µg/L (34336)	D- Limonene, water, unfiltered, recover- able, µg/L (62819)	Fluoran- thene, water, unfiltered, recover- able, µg/L (34376)	Hexa- hydro- hexa- methyl cyclo- penta- benzo- pyran, water, unfiltered, recover- able, µg/L (62823)	Indole, water, unfiltered, recover- able, µg/L (62824)	Isoborneol, water, unfiltered, recover- able, µg/L (62825)	Iso- phorone, water, unfiltered, recover- able, µg/L (34408)	Isopropyl- benzene, water, unfiltered, recover- able, µg/L (77223)	Iso- quinoline, water, unfiltered, recover- able, µg/L (62826)	Menthol, water, unfiltered, recover- able, µg/L (62827)
	06-17-2013	--	--	--	--	--	--	--	--	--
07-03-2013	--	--	--	--	--	--	--	--	--	--
07-16-2013	--	--	--	--	--	--	--	--	--	--
07-31-2013	--	--	--	--	--	--	--	--	--	--
08-05-2013	--	--	--	--	--	--	--	--	--	--
08-19-2013	--	--	--	--	--	--	--	--	--	--
09-04-2013	--	--	--	--	--	--	--	--	--	--
09-16-2013	--	--	--	--	--	--	--	--	--	--

WATER-QUALITY DATA
WATER YEAR OCTOBER 2012 TO SEPTEMBER 2013

Part 19 of 20

[FNU, Formazin nephelometric units; LED, light-emitting diode; N, nitrogen; P, phosphorus; ft³/s, cubic feet per second; mg/L, milligrams per liter; nm, nanometers; °C, degrees Celsius; µS/cm, microsiemens per centimeter; µg/L, micrograms per liter; <, less than; E, estimated; M, presence verified but not quantified]

Begin date	Methyl salicylate, water, unfiltered, recover- able, µg/L (62828)	Naphtha- lene, water, unfiltered, recover- able, µg/L (34696)	Phenan- threne, water, unfiltered, recover- able, µg/L (34461)	Phenol, water, unfiltered, recover- able, µg/L (34694)	Pyrene, water, unfiltered, recover- able, µg/L (34469)	Tetra- chloro- ethene, water, unfiltered, recover- able, µg/L (34475)	Tribromo- methane, water, unfiltered, recover- able, µg/L (32104)	Tributyl phosphate, water, unfiltered, recover- able, µg/L (62832)	Triclosan, water, unfiltered, recover- able, µg/L (61708)	Triethyl citrate, water, unfiltered, recover- able, µg/L (62833)
	06-17-2013	--	--	--	--	--	--	--	--	--
07-03-2013	--	--	--	--	--	--	--	--	--	--
07-16-2013	--	--	--	--	--	--	--	--	--	--
07-31-2013	--	--	--	--	--	--	--	--	--	--
08-05-2013	--	--	--	--	--	--	--	--	--	--
08-19-2013	--	--	--	--	--	--	--	--	--	--
09-04-2013	--	--	--	--	--	--	--	--	--	--
09-16-2013	--	--	--	--	--	--	--	--	--	--

04249000 OSWEGO RIVER AT LOCK 7, OSWEGO, NY—Continued

WATER-QUALITY DATA
WATER YEAR OCTOBER 2012 TO SEPTEMBER 2013

Part 20 of 20

[FNU, Formazin nephelometric units; LED, light-emitting diode; N, nitrogen; P, phosphorus; ft³/s, cubic feet per second; mg/L, milligrams per liter; nm, nanometers; °C, degrees Celsius; μS/cm, microsiemens per centimeter; μg/L, micrograms per liter; <, less than; E, estimated; M, presence verified but not quantified]

Begin date	Triphenyl phosphate, water, unfiltered, recoverable, μg/L (62834)	Tris(2-butoxyethyl) phosphate, water, unfiltered, recoverable, μg/L (62830)	Tris(2-chloroethyl) phosphate, water, unfiltered, recoverable, μg/L (62831)	Tris(di-chloroisopropyl) phosphate, water, unfiltered, recoverable, μg/L (61707)	Suspended sediment concentration, mg/L (80154)
06-17-2013	--	--	--	--	--
07-03-2013	--	--	--	--	6
07-16-2013	--	--	--	--	--
07-31-2013	--	--	--	--	--
08-05-2013	--	--	--	--	6
08-19-2013	--	--	--	--	--
09-04-2013	--	--	--	--	6
09-16-2013	--	--	--	--	--