



Water-Data Report 2010

**335849078054301 Local number BR-100, WELL 15A, NEAR SOUTHPORT, NC (CASTLE HAYNE/PEEDEE)**

Northern Atlantic Coastal Plain aquifer system  
Peedee Formation  
Brunswick County, NC

LOCATION.--Lat 33°58'49", long 78°05'43" referenced to North American Datum of 1983, Brunswick County, NC, Hydrologic Unit 03030005, west of Southport on North Carolina Highway 211, 1.8 mi northwest of intersection with North Carolina Highway 133. Owner: Brunswick County.

**GROUNDWATER RECORDS**

WELL CHARACTERISTICS.--Drilled observation well, depth 158.3 ft, diameter 6 in.; cased to 60 ft, open hole from 60 ft to 158.3 ft.

DATUM.--Land-surface datum is 56 ft above NGVD of 1929 (from topographic map). Measuring point: Top of instrument shelf, 2.42 ft above land-surface datum.

PERIOD OF RECORD.--February 1999 to current year.

GAGE.--Water-level recorder collecting data at 15-minute intervals. Satellite telemetry at station.

REMARKS.--Well is completed in the Castle Hayne and Peedee aquifers. Water levels are affected by pumping of nearby water-supply wells. Well is part of the Brunswick County groundwater monitoring network.

EXTREMES FOR PERIOD OF RECORD.--Highest water level recorded, 8.30 ft below land-surface datum, April 1, 2001; lowest water level recorded, 57.01 ft below land-surface datum, July 20, 21, 2010.

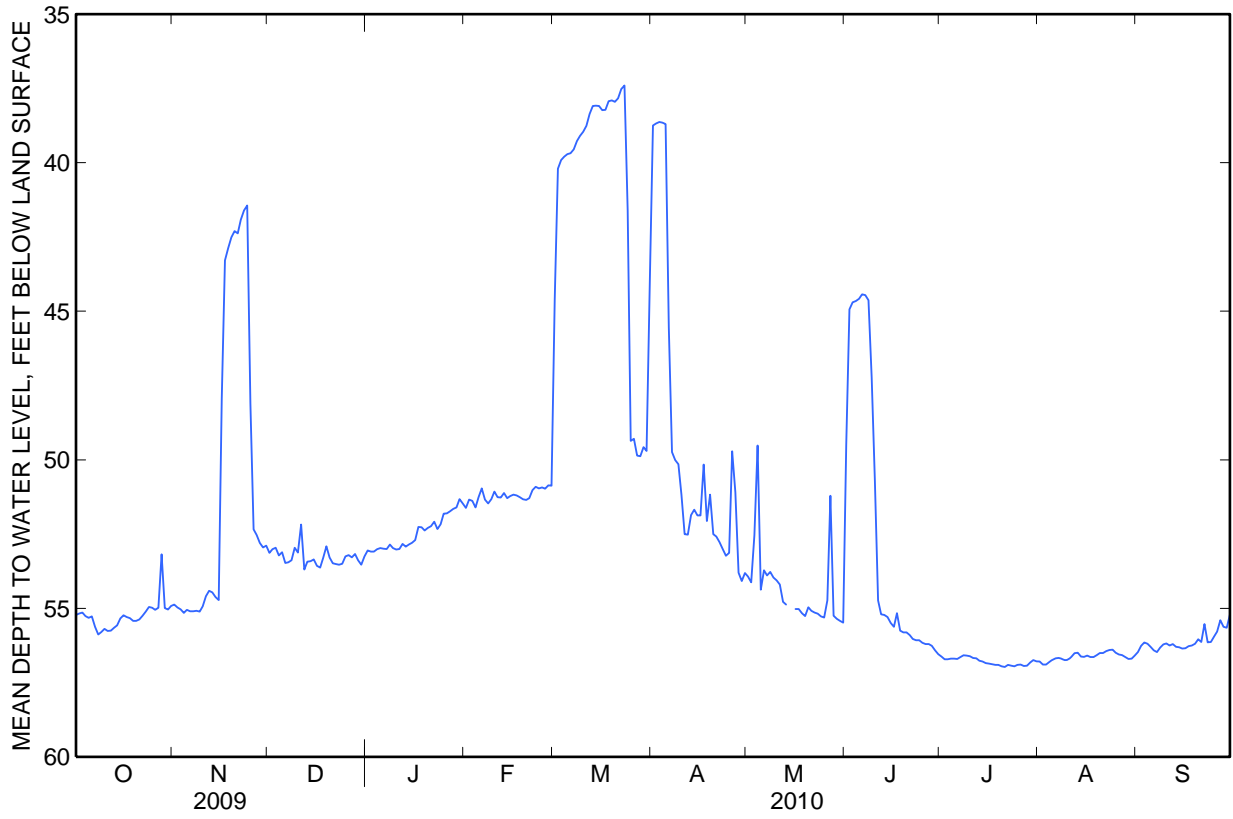
335849078054301 Local number BR-100, WELL 15A, NEAR SOUTHPORT, NC (CASTLE HAYNE/PEEDEE)—Continued

**DEPTH TO WATER LEVEL, FEET BELOW LAND SURFACE**  
**WATER YEAR OCTOBER 2009 TO SEPTEMBER 2010**  
**DAILY MEAN VALUES**

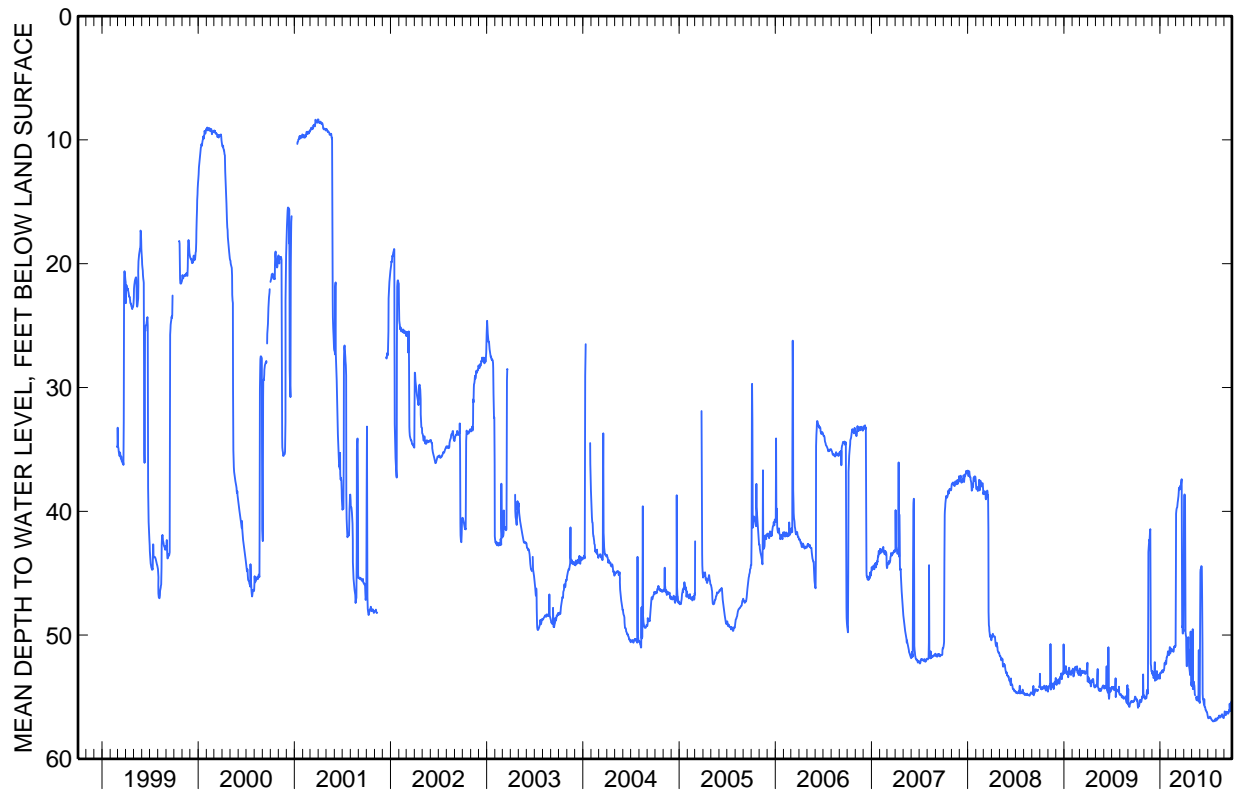
Day	Oct	Nov	Dec	Jan	Feb	Mar	Apr	May	Jun	Jul	Aug	Sep
1	55.22	54.87	53.13	53.05	51.62	44.61	38.75	53.93	49.49	56.62	56.79	56.47
2	55.17	54.97	53.01	53.09	51.34	40.20	38.68	54.12	44.94	56.71	56.89	56.26
3	55.14	55.03	52.96	53.09	51.38	39.91	38.63	52.54	44.70	56.71	56.89	56.15
4	55.26	55.15	53.22	53.01	51.60	39.80	38.65	49.52	44.66	56.69	56.81	56.19
5	55.32	55.05	53.11	52.97	51.26	39.71	38.70	54.37	44.58	56.69	56.74	56.29
6	55.27	55.10	53.47	52.99	50.96	39.68	45.53	53.72	44.43	56.70	56.68	56.41
7	55.62	55.10	53.45	53.00	51.34	39.55	49.74	53.89	44.46	56.64	56.67	56.47
8	55.88	55.08	53.38	52.85	51.47	39.27	50.01	53.77	44.63	56.58	56.70	56.32
9	55.80	55.11	52.96	52.97	51.32	39.10	50.15	53.96	47.23	56.59	56.74	56.21
10	55.69	54.93	53.12	53.02	51.07	38.96	51.17	54.06	50.71	56.61	56.72	56.18
11	55.76	54.59	52.18	53.00	51.26	38.76	52.50	54.20	54.73	56.67	56.63	56.25
12	55.75	54.41	53.69	52.83	51.27	38.36	52.52	54.78	55.20	56.68	56.51	56.20
13	55.65	54.46	53.43	52.92	51.12	38.09	51.86	54.87	55.22	56.76	56.49	56.29
14	55.57	54.62	53.41	52.85	51.29	38.08	51.68	---	55.29	56.79	56.62	56.31
15	55.34	54.72	53.35	52.79	51.22	38.09	51.87	---	55.49	56.84	56.63	56.35
16	55.23	47.94	53.57	52.70	51.17	38.23	51.87	55.02	55.62	56.86	56.59	56.34
17	55.29	43.29	53.63	52.26	51.20	38.22	50.16	55.02	55.16	56.88	56.64	56.27
18	55.33	42.88	53.30	52.27	51.26	37.93	52.06	55.16	55.75	56.90	56.64	56.25
19	55.42	42.51	52.91	52.38	51.33	37.90	51.17	55.26	55.81	56.90	56.57	56.19
20	55.42	42.30	53.29	52.29	51.35	37.95	52.50	54.96	55.81	56.95	56.50	56.04
21	55.37	42.38	53.48	52.23	51.29	37.83	52.58	55.08	55.90	56.97	56.50	56.13
22	55.25	41.92	53.51	52.08	51.02	37.52	52.77	55.14	56.03	56.90	56.44	55.53
23	55.11	41.61	53.53	52.33	50.91	37.40	53.00	55.18	56.07	56.93	56.40	56.14
24	54.95	41.44	53.50	52.17	50.96	41.61	53.23	55.27	56.07	56.95	56.39	56.13
25	54.98	48.10	53.25	51.81	50.93	49.36	53.13	55.31	56.16	56.90	56.49	55.95
26	55.05	52.34	53.21	51.80	50.97	49.29	49.71	54.73	56.20	56.89	56.55	55.78
27	54.98	52.53	53.28	51.73	50.86	49.86	51.09	51.21	56.20	56.94	56.57	55.40
28	53.18	52.80	53.17	51.65	50.87	49.88	53.80	55.25	56.26	56.93	56.64	55.62
29	54.99	52.95	53.38	51.60	---	49.57	54.08	55.35	56.41	56.82	56.70	55.65
30	55.04	52.89	53.53	51.32	---	49.70	53.81	55.42	56.54	56.74	56.69	55.21
31	54.92	---	53.25	51.47	---	44.10	---	55.48	---	56.78	56.59	---
<b>Mean</b>	55.26	50.70	53.28	52.47	51.20	41.24	49.51	54.36	52.52	56.79	56.63	56.10
<b>Max</b>	55.88	55.15	53.69	53.09	51.62	49.88	54.08	55.48	56.54	56.97	56.89	56.47
<b>Min</b>	53.18	41.44	52.18	51.32	50.86	37.40	38.63	49.52	44.43	56.58	56.39	55.21

Water Year 2010	
<b>Mean</b>	52.51
<b>High</b>	37.40
<b>Low</b>	56.97

335849078054301 Local number BR-100, WELL 15A, NEAR SOUTHPORT, NC (CASTLE HAYNE/PEEDEE)—Continued



335849078054301 Local number BR-100, WELL 15A, NEAR SOUTHPORT, NC (CASTLE HAYNE/PEEDEE)—Continued



335849078054301 Local number BR-100, WELL 15A, NEAR SOUTHPORT, NC (CASTLE HAYNE/PEEDEE)—Continued

**WATER-QUALITY RECORDS**

PERIOD OF RECORD.--Water year 2010.

**WATER-QUALITY DATA  
WATER YEAR OCTOBER 2009 TO SEPTEMBER 2010**

[ft, feet; mg/L, milligrams per liter; °C, degrees Celsius; μS/cm, microsiemens per centimeter]

<b>Date</b>	<b>Sample start time</b>	<b>Medium name</b>	<b>Sample type</b>	<b>Depth to water level, ft below land surface (72019)</b>	<b>Specific conductance, water, unfiltered, μS/cm at 25 °C (00095)</b>	<b>Temperature, water, °C (00010)</b>	<b>Chloride, water, filtered, mg/L (00940)</b>
09-01-2010	1720	Ground water	Regular	56.44	381	21.0	9.50