



Water-Data Report 2010

**335631078003604 Local number BR-081 (NC-197), NCDENR SOUTHPORT RESEARCH STATION, GG32t4,  
NEAR SOUTHPORT, NC (PEEDEE)**

Northern Atlantic Coastal Plain aquifer system  
Peedee Formation  
Brunswick County, NC

LOCATION.--Lat 33°56'31", long 78°00'35" referenced to North American Datum of 1983, Brunswick County, NC, Hydrologic Unit 03030005, 1.6 mi north of Southport, on Secondary Road 1527. Owner: NCDENR (North Carolina Department of Environment and Natural Resources).

**GROUNDWATER RECORDS**

WELL CHARACTERISTICS.--Drilled observation well, depth 200 ft, diameter 6 in., cased to 93.5 ft, open hole from 93.5 ft to 200 ft; measured depth 199 ft, September 1997.

DATUM.--Land-surface datum is 28.08 ft above National Geodetic Vertical Datum of 1929. Measuring point: top of instrument shelf, 1.17 ft above land-surface datum, October 29, 1999, to present.

PERIOD OF RECORD.--January 1970 to current year. Continuous record began October 1999.

REVISED RECORDS.--WDR NC-04-2: 2002 (daily water levels).

GAGE.--Water-level recorder collecting data at 15-minute intervals. Satellite telemetry at site.

REMARKS.--Well is part of the Brunswick County groundwater monitoring program. Water levels affected by local pumping since December 2002.

EXTREMES FOR PERIOD OF RECORD.--Highest water level measured, 21.28 ft below land-surface datum, March 8, 1988; lowest water level recorded, 58.39 ft below land-surface datum, January 28, 2005.

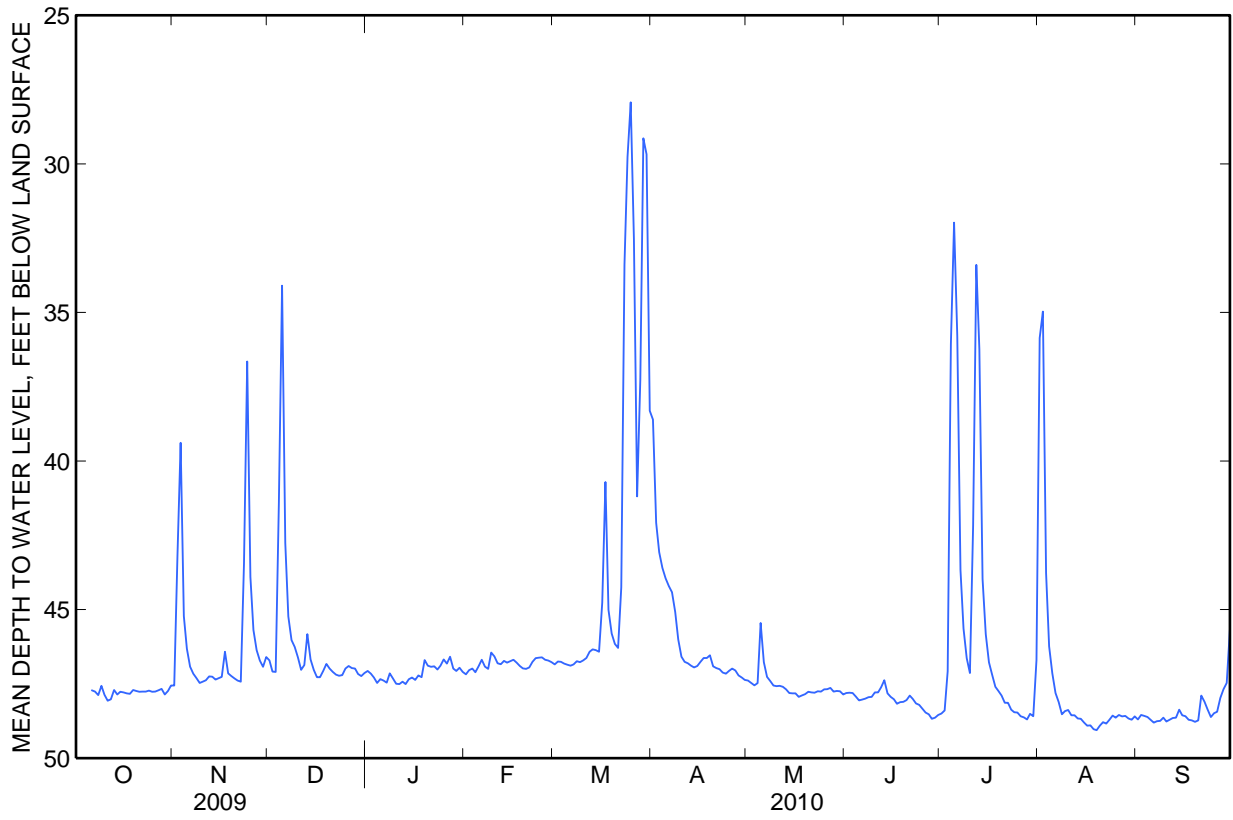
335631078003604 Local number BR-081 (NC-197), NCDENR SOUTHPORT RESEARCH STATION, GG32t4, NEAR SOUTHPORT, NC (PEEDEE)—  
Continued

**DEPTH TO WATER LEVEL, FEET BELOW LAND SURFACE  
WATER YEAR OCTOBER 2009 TO SEPTEMBER 2010  
DAILY MEAN VALUES**

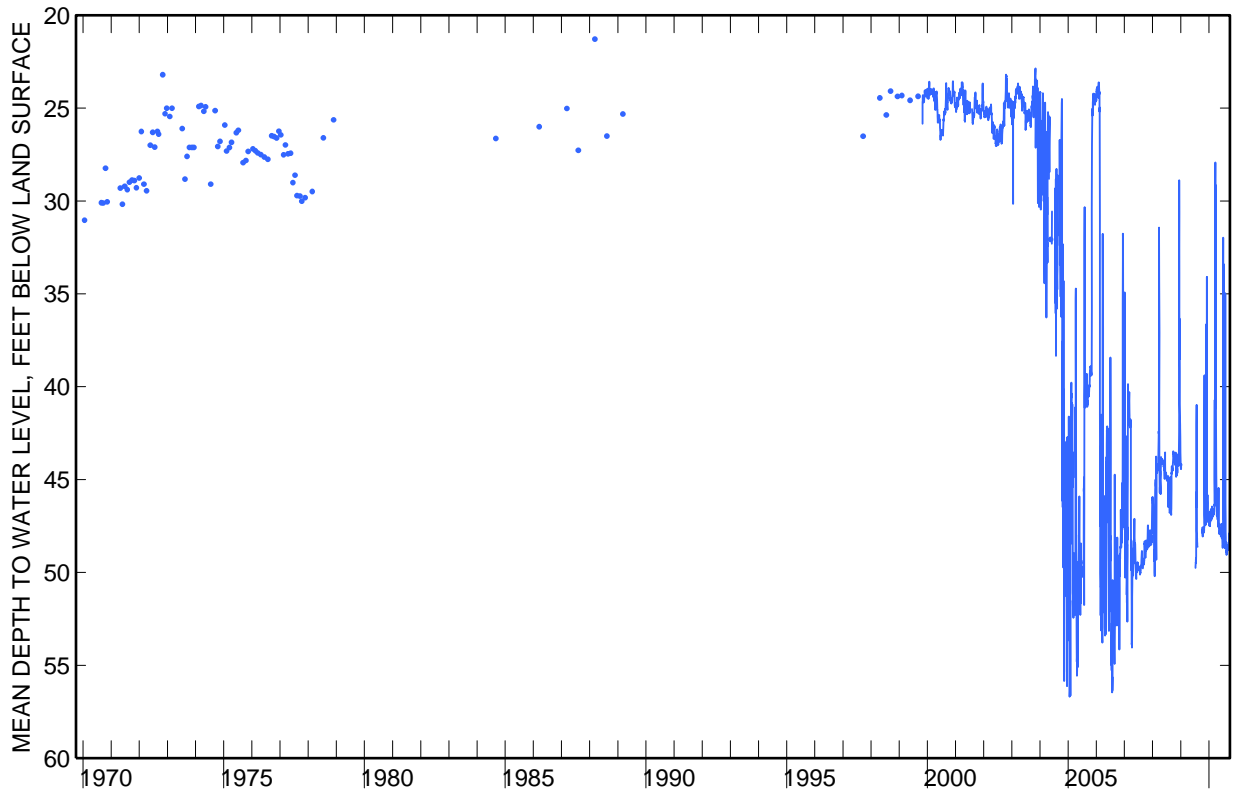
Day	Oct	Nov	Dec	Jan	Feb	Mar	Apr	May	Jun	Jul	Aug	Sep
1	---	47.56	46.71	47.07	47.18	46.85	38.61	47.39	47.81	48.50	35.86	48.70
2	---	43.22	47.09	47.16	47.04	46.75	42.08	47.47	47.80	48.40	34.97	48.55
3	---	39.39	47.10	47.29	46.99	46.76	43.07	47.55	47.81	47.08	43.77	48.58
4	---	45.22	41.39	47.47	47.11	46.82	43.60	47.48	47.93	36.07	46.24	48.62
5	---	46.32	34.10	47.34	46.91	46.86	43.95	45.45	48.06	31.98	47.15	48.71
6	47.72	46.92	42.76	47.39	46.69	46.89	44.21	46.77	48.03	35.79	47.81	48.81
7	47.76	47.16	45.23	47.46	46.92	46.85	44.42	47.27	48.00	43.67	48.12	48.76
8	47.88	47.31	46.03	47.15	47.00	46.74	45.08	47.41	47.95	45.64	48.53	48.75
9	47.57	47.47	46.26	47.32	46.45	46.77	46.01	47.56	47.94	46.64	48.42	48.64
10	47.87	47.43	46.61	47.50	46.58	46.71	46.59	47.58	47.79	47.14	48.38	48.77
11	48.07	47.38	47.03	47.51	46.81	46.63	46.76	47.57	47.79	42.18	48.56	48.71
12	48.02	47.25	46.87	47.43	46.84	46.42	46.81	47.60	47.62	33.40	48.56	48.65
13	47.71	47.26	45.83	47.51	46.73	46.34	46.89	47.69	47.38	36.23	48.67	48.64
14	47.86	47.36	46.68	47.35	46.79	46.37	46.95	47.81	47.82	43.97	48.68	48.37
15	47.77	47.31	47.03	47.29	46.74	46.42	46.90	47.82	47.94	45.83	48.80	48.56
16	47.79	47.27	47.28	47.37	46.69	44.77	46.76	47.82	48.02	46.78	48.91	48.59
17	47.82	46.42	47.28	47.22	46.79	40.71	46.63	47.94	48.17	47.20	48.90	48.71
18	47.84	47.15	47.07	47.28	46.90	45.01	46.63	47.89	48.12	47.60	49.03	48.73
19	47.71	47.24	46.83	46.70	46.98	45.81	46.54	47.85	48.11	47.74	49.06	48.78
20	47.74	47.32	46.99	46.89	47.00	46.16	46.91	47.77	48.05	47.90	48.91	48.73
21	47.77	47.39	47.10	46.93	46.95	46.29	46.97	47.79	47.90	48.14	48.79	47.90
22	47.76	47.43	47.19	46.91	46.76	44.25	47.01	47.80	48.01	48.14	48.84	48.10
23	47.76	43.44	47.23	47.02	46.64	33.39	47.12	47.75	48.16	48.37	48.71	48.37
24	47.73	36.65	47.21	46.89	46.62	29.77	47.16	47.76	48.21	48.46	48.57	48.62
25	47.77	43.90	46.99	46.68	46.61	27.93	47.07	47.69	48.34	48.47	48.64	48.49
26	47.76	45.69	46.90	46.82	46.69	32.54	46.99	47.68	48.47	48.59	48.55	48.44
27	47.72	46.37	46.97	46.59	46.72	41.19	47.05	47.64	48.53	48.63	48.60	47.98
28	47.67	46.72	46.99	46.99	46.77	37.26	47.22	47.76	48.68	48.70	48.58	47.68
29	47.86	46.93	47.17	47.07	---	29.14	47.29	47.74	48.64	48.51	48.67	47.47
30	47.74	46.60	47.24	46.96	---	29.68	47.37	47.75	48.55	48.59	48.71	45.67
31	47.56	---	47.14	47.10	---	38.31	---	47.86	---	46.70	48.60	---
<b>Mean</b>	47.78	46.04	46.14	47.15	46.82	42.34	45.89	47.58	48.05	45.19	47.50	48.40
<b>Max</b>	48.07	47.56	47.28	47.51	47.18	46.89	47.37	47.94	48.68	48.70	49.06	48.81
<b>Min</b>	47.56	36.65	34.10	46.59	46.45	27.93	38.61	45.45	47.38	31.98	34.97	45.67

Water Year 2010	
<b>Mean</b>	46.55
<b>High</b>	27.93
<b>Low</b>	49.06

335631078003604 Local number BR-081 (NC-197), NCDENR SOUTHPORT RESEARCH STATION, GG32t4, NEAR SOUTHPORT, NC (PEEDEE)—  
Continued



335631078003604 Local number BR-081 (NC-197), NCDENR SOUTHPORT RESEARCH STATION, GG32t4, NEAR SOUTHPORT, NC (PEEDEE)—  
Continued



335631078003604 Local number BR-081 (NC-197), NCDENR SOUTHPORT RESEARCH STATION, GG32t4, NEAR SOUTHPORT, NC (PEEDEE)—  
Continued

### WATER-QUALITY RECORDS

PERIOD OF RECORD.--Water year 2010.

#### WATER-QUALITY DATA

##### WATER YEAR OCTOBER 2009 TO SEPTEMBER 2010

[ft, feet; mg/L, milligrams per liter; °C, degrees Celsius;  $\mu$ S/cm, microsiemens per centimeter]

Date	Sample start time	Medium name	Sample type	Depth to water level, ft below land surface (72019)	Specific conductance, water, unfiltered, $\mu$ S/cm at 25 °C (00095)	Temperature, water, °C (00010)	Chloride, water, filtered, mg/L (00940)
09-01-2010	1033	Ground water	Regular	48.83	299	21.2	22.7